



Gas & Coal Reserve And Production

December 2017



Gas Reserve & Production at a glance in December 2017:

Gas Initially in Place (GIIP)	:	35,796.19 Bcf
Recoverable (2P)	:	28,523.40 Bcf
Cumulative Production as of December 2017	:	15494.43 Bcf
Remaining Reserve upto December 2017	:	13,028.97 Bcf
Gas Production in December 2017	:	82.42 Bcf
National Oil Company (NOC's) production in December 2017	:	32.14 Bcf (39.00%)
International Oil Company (IOC's) production in December 2017	:	50.28 Bcf (61.00%)
No. of National Oil Company (NOC's) in December 2017	:	3 (BGFCL, BAPEX, SGFL)
No. of International Oil Company (IOC's) in December 2017	:	2 (Chevron, Tullow)
Total gas fields of National Oil Company(NOC) in December 2017	:	21
Total gas fields of International Oil Company(IOC) in December 2017	:	4
Total gas wells of National Oil Company(NOC) in December 2017	:	108
Total gas wells of International Oil Company(IOC) in December 2017	:	45
No. of National Oil Company (NOC's) gas production well in December 2017	:	68
No. of International Oil Company (IOC's) gas production well in December 2017	:	43
No. of National Oil company(NOC's) suspended well in December 2017	:	40
No. of International Oil company(IOC's) suspended well in December 2017	:	2

Executive Summary of December 2017

Total gas and condensate Production in December 2017 were 82.42 Bcf and 370764 Bbl. In the previous month i.e. November 2017, gas and condensate production was 80.56 Bcf and 365809 Bbl and in the same month of the previous year i.e. December 2016, total gas and condensate production was 83.11 Bcf and 391,000 Bbl respectively. It indicates that 1.86 Bcf more gas was produced than November 2017 and 0.69 Bcf less gas was produced than December 2016.

The National Oil Companies (NOC's) and International Oil Companies (IOC's) Produced 32.14 Bcf and 50.28 Bcf gas respectively in December 2017. During the previous month i.e. November 2017 gas production by the National Oil Companies (NOC's) and International Oil Companies (IOC's) were 32.46 Bcf and 48.11 Bcf respectively. On the other hand, gas production by the National Oil Companies (NOC's) and International Oil Companies (IOC's) in December 2016 were 33.50 Bcf and 49.61 Bcf respectively. It indicates that the share of gas production of National Oil Companies (NOC's) decreased slightly than the previous time. On the other hand, International Oil Companies' (IOC's) production increased compared to the previous years. In the month of December 2017 Bibiyana gas field Produced 38.23 Bcf gas and it ranked top among the gas producers. It is noted that Bibiyana gas field Produced 38.34 Bcf in December 2016 and 37.51 Bcf gas in November 2017. Average production from the field during the month of December 2017 was 1233 Mmcf/d.

During the month of December 2017 total production of condensate was 370,764 Bbl compared to 365,809 Bbl in the previous month i.e. November 2017. Bibiyana gas field Produced 282,950 Bbl condensate and ranked top while Jalalabad ranked 2nd by producing 35,065 Bbl. In the previous month i.e. November 2017 Bibiyana gas field and Jalalabad gas field produced 282,052 Bbl and 33,857 Bbl of Condensate respectively.

The month of December 2017 total coal production was 106,357.62 Ton. In the previous month i.e. November 2017 total coal production was 459,848.60 Ton. It indicates that 46,509.02 Ton more Coal was produced compared to November 2017.

Table of Contents

Gas Report	Page No.
Summary	1
summary of Reserve and Production	2
Production comparison between November 2017 & December 2017	3
Monthly Production by Fields & Wells up to December 2017	4-11
Monthly Condensate Production by Fields up to December 2017	12-13
Monthly Water Production by Fields from December 2017	14-15
Conditions of Field and Well upto December 2017	16-20
Chart	
Reserve, Production and Remaining Reserve as of December 2017	21
Daily Average Gas Production from January 2012 to December 2017	22
Field wise Daily Average Production as of December 2017	23
Well wise Daily Average Production-BGFCL as of December 2017	24
Well wise Daily Average Production-BAPEX and SGFL, December 2017	25
Well wise Daily Average Production-IOC and JVA, December 2017	26
Comparison of Field wise Daily Average Gas Production between Nov 17 & December 17	27
Daily Average Production by Operator, December 2017	28
Comparison of Operator wise daily average Production between Nov 17 & December 17	29
Daily Average Production – National vs IOC’s, December 2017	30
Comparison of daily avg Gas Production- National vs IOC’s between Nov 17 & December 17	31
Daily Average Production IOC’s and JVA, December 2017	32
Monthly Condensate Production, December 2017	33
Coal Report	
Summary	34-35
Barapukuria Coal Mine-MPM and P Contract (BCMCL)	36
Barapukuria Coal Mine Daywise Data Graph for December 2017	37

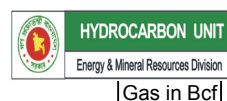
Summary of Reserve and Production As of 31 December 2017

Gas Initially Place (Proven + Probable)	35,796.19 Bcf	35.80 Tcf
Recoverable (Proven + Probable)	28,523.40 Bcf	28.52 Tcf
Gas Production in December 2017	82.42 Bcf	0.08 Tcf
Cumulative Production as of December 2017	15494.43 Bcf	15.49 Tcf
Remaining Reserve	13,028.97 Bcf	13.03 Tcf

NOTE: Reserve figure based on "Updated Report on Bangladesh Gas Reserve Estimation 2010", prepared by Gustavson Associates LLC, USA

Summary of Reserve and Production

(As of December 2017)



Sl No.	Field	2P	GIIP	2P Reserve	Gas Prod. in December'17	Cum. Gas Production	Remaining Reserve	Cum. Condensate Production
1	Begumganj		47.0	33.0	0.0	0.9	32.1	0
2	Shahbazpur		415.0	261.0	0.9	38.8	222.2	4
3	Semutang		654.0	318.0	0.0	12.6	305.4	5
4	Fenchuganj		483.0	329.0	0.4	154.1	174.9	113
5	Salda Nadi		393.0	275.0	0.1	90.0	185.0	58
6	Srikail*		230.0	161.0	1.1	68.8	92.2	94
7	Sundalpur *		62.2	50.2	0.0	9.8	40.4	0
8	Rupganj		48.0	33.6	0.0	0.7	32.9	1
	Bapex		2,332.2	1,460.8	2.5	375.7	1,085.1	276
9	Meghna		122.0	101.0	0.4	64.4	36.6	99
10	Narshingdi		405.0	345.0	0.8	190.1	154.9	402
11	Kamta		72.0	50.0	0.0	21.1	28.9	4
12	Habiganj		3,981.0	2,787.0	6.8	2,347.2	439.8	124
13	Bakhrabad		1,825.0	1,387.0	1.0	801.2	585.8	1,015
14	Titas		9,039.0	7,582.0	16.5	4,460.0	3,122.0	5,064
	BGFCL		15,444.0	12,252.0	25.5	7,884.1	4,367.9	6,709
15	Sangu		976.0	771.0	0.0	489.5	281.5	37
	Santos/Cairn		976.0	771.0	0.0	489.5	281.5	37
16	Bibiyana		5,321.0	4,532.0	38.2	3,147.0	1,385.0	17,887
17	Moulavi Bazar		630.0	494.0	1.0	311.4	182.6	116
18	Jalalabad**		1,346.0	1,184.0	8.1	1,187.7	-3.7	9,772
	Chevron		7,297.0	6,210.0	47.3	4,646.1	1,563.9	27,775
19	Feni		185.0	130.0		63.0	67.0	110
	Niko		185.0	129.6		63.0	66.6	110
20	Kailas Tila		3,463.0	2,880.0	2.0	703.8	2,176.2	7,605
21	Sylhet		580.0	408.0	0.1	212.7	195.3	785
22	Rashidpur		3,887.0	3,134.0	1.7	608.6	2,525.4	762
23	Chattak		677.0	474.0	0.0	25.8	448.2	4
24	Beani Bazar		225.0	137.0	0.3	91.9	45.1	1,516
	SGFL		8,832.0	7,033.0	4.1	1,642.8	5,390.2	10,672
25	Bangura		730.0	621.0	2.9	393.3	227.7	971
	Tullow		730.0	621.0	2.9	393.3	227.7	971
26	Kutubdia		65.0	46.0	0.0	0.0	46.0	0
	Total		35,796.2	28,523.4	82.42	15,494.4	13,029.0	46,549

* Preliminary reserve estimated by BAPEX

** 2P reserve estimated by Petrobangla

Production comparison between Nov. 2017 & Dec 2017



HYDROCARBON UNIT
Energy & Mineral Resources Division

SI No.	Field	Gas Prod. (MMcf) in November'17	Daily Avg. (MMcfd) in November'17	Gas Prod. (MMcf) in December'17	Daily Avg. (MMcfd) in December'17
1	Begumganj	0	0	0	0
2	Shahbazpur	1122	37	868	28
3	Semutang	53	2	48	2
4	Fenchuganj	372	12	396	13
5	Salda Nadi	113	4	109	4
6	Srikail	1089	36	1109	36
7	Sundalpur	0	0	0	0
8	Rupganj	0	0	0	0
Bapex		2748	92	2530	82
9	Meghna	382	13	396	13
10	Narshingdi	820	27	845	27
11	Kamta	0	0	0	0
12	Habiganj	6563	219	6799	219
13	Bakhrabad	1036	35	1029	33
14	Titas	15905	530	16474	531
BGFCL		24705	823	25542	824
15	Sangu	0	0	0	0
Santos/Cairn		0	0	0	0
16	Bibiyana	37515	1250	38232	1233
17	Moulavi Bazar	1050	35	1030	33
18	Jalalabad	7726	258	8083	261
Chevron		46291	1543	47346	1527
19	Feni	0	0	0	0
Niko		0	0	0	0
20	Kailas Tila	1909	64	1963	63
21	Sylhet	144	5	147	5
22	Rashidpur	1627	54	1680	54
23	Chattak	0	0	0	0
24	Beani Bazar	273	9	283	9
SGFL		3953	132	4073	131
25	Bangura	2865	95	2929	94
Tullow		2865	95	2929	94
26	Kutubdia	0	0	0	0
Total		80561	2685	82418	2659

Monthly Production by Field and Well upto Decemerr 2017



Well	Jan	Feb	Mar	Apr	May	Jun	Jul	Aug	Sep	Oct	Nov	Dec	Total	Cumulative	2016	2015	2014
Field :	Bakharabad																
BKB-1	0	0	0	0	0	0	0	0	0	0	0	0	0	141,167	0	1,030	1,343
BKB-2	51.99	46	51	47	45	44	45	44	42	42	41	43	543	86,126	731	873	844
BKB-3	190.62	171	189	178	169	185	196	197	195	196	191	192	2,249	158,856	2,223	1,620	1,886
BKB-4	Production Suspended													55,872			
BKB-5	153.29	137	151	148	156	160	165	159	153	157	152	156	1,847	56,989	1,814	1,821	416
BKB-6	Production Suspended													50,069			
BKB-7	0	0	0	0	0	0	0	0	0	0	0	0	0	107,750	0	1,399	1,387
BKB-8	344.65	308	343	328	295	275	289	282	272	262	245	219	3,462	124,244	4,142	3,536	3,099
BKB-9	354.45	317	349	332	286	276	282	281	272	292	292	303	3,637	17,790	4,160	4,287	4,705
BKB-10	151.33	133	143	117	113	108	114	113	110	118	115	117	1,453	2,377	924		
Field Total:	1,246	1,112	1,226	1,149	1,064	1,048	1,091	1,077	1,044	1,068	1,036	1,029	13,190	801,238	13,070	14,565	13,680
Daily Avg.(mmscfd)	40	40	40	38	34	35	35	35	35	34	35	33	36		422	470	441
Field :	Bangura																
Bangura-1	424	379	410	388	401	387	407	406	370	432	448	462	4,914	84,639	4,886	5,316	5,201
Bangura-2	731	653	708	669	691	662	630	630	567	642	619	635	7,837	72,736	9,200	10,167	10,490
Bangura-3	660	708	770	729	757	728	757	768	706	717	671	691	8,662	89,462	10,038	10,942	11,173
Bangura-6	68	297	342	373	388	371	386	393	361	394	363	364	4,100	4,100			
Bangura-5	901	803	859	808	835	805	836	804	705	803	764	776	9,699	142,332	11,514	12,347	12,436
Field Total:	2,784	2,840	3,088	2,968	3,072	2,953	3,017	3,001	2,708	2,988	2,865	2,929	35,212	393,269	35,639	38,773	39,300
Daily Avg.(mmscfd)	90	101	100	99	99	98	97	97	90	96	95	94	96		1,150	1,251	1,268
Field :	Beani Bazar																
BB-1	135	126	156	148	144	121	100	71	22	1	0	0	1,023	35,481	33	0	62
BB-2	275	257	281	267	272	258	273	284	276	284	273	283	3,282	56,460	3,431	3,477	3,479
Field Total:	410	383	437	415	416	379	373	355	298	285	273	283	4,306	91,941	3,464	3,477	3,541
Daily Avg.(mmscfd)	13	14	14	14	13	13	12	11	10	9	9	9	12		112	112	114
Field :	Bibiyana																
BY-1	2,869	2,670	2,967	2,954	3,106	2,837	3,341	3,189	2,686	3,049	2,902	3,025	35,595	346,142	35,050	31,887	33,319
BY-2	2,021	1,857	2,088	2,001	2,025	1,919	2,223	2,115	1,853	2,062	1,850	1,943.7	23,957	253,039	20	16,096	30,474
BY-3	1,165	1,077	1,176	1,077	1,162	1,006	356	0	740	722	698	726.69	9,904	229,021	16,873	19,957	20,529
BY-4	490	465	527	389	563	450	770	466	517	603	655	677.37	6,571	151,979	7,322	11,070	13,574

Monthly Production by Field and Well upto Decemberr 2017



Well	Jan	Feb	Mar	Apr	May	Jun	Jul	Aug	Sep	Oct	Nov	Dec	Total	Cumulative	2016	2015	2014
BY-5	713	675	727	641	715	616	725	658	653	639	640	715.45	8,117	165,836	9,229	10,856	15,094
BY-6	1,064	1,011	1,140	983	1,157	707	1,019	741	996	1,024	1007	1029.4	11,879	210,438	15,208	16,520	18,268
BY-7	2,353	2,432	2,744	2800	2,913	2,715	3,220	3,016	2,611	2,874	2649	2546.5	32,874	221,428	33,040	10,895	9,515
BY-8	1,037	1,077	1,164	1165	1,164	1,017	1,150	1,033	983	932	899	865.88	12,486	125,323	2,987	5,237	15,082
BY-9	492	429	577	502	498	503	655	586	525	511	537	431.8	6,247	120,524	6,820	7,197	8,369
BY-10	2,208	2,556	2,659	2798	2,886	2,574	3,155	3,055	2,697	2,869	2777	2732	32,967	304,043	33,582	32,542	35,076
BY-11	659	562	639	593	570	518	617	609	550	518	497	480.99	6,813	107,814	9,357	12,458	17,815
BY-12	822	669	791	740	703	647	759	658	621	614	631	627.93	8,284	115,869	10,574	12,677	15,676
BY-13	1,209	843	1,079	1043	1,034	946	1,121	980	849	939	954	844.45	11,842	59,789	15,603	19,645	12,699
BY-14	1,459	1,198	1,375	1360	1,422	1,189	1,513	1,256	1,143	1,212	1042	1183.8	15,354	79,090	15,170	25,721	22,846
BY-15	1,932	1,573	1,092	1425	1,337	1,184	1,647	1,938	1,454	1,877	1767	1883	19,111	72,626	17,698	16,439	19,378
BY-16	1,221	950	1,228	1123	1,125	889	1,213	1,007	920	938	1013	915.62	12,541	51,809	15,844	18,446	4,978
BY-17	1,302	1,139	1,380	1284	1,460	1,195	737	1,561	1,251	1,401	1378	1323	15,412	60,268	15,463	23,304	6,090
BY-18	2,668	2,356	2,562	2517	2,617	2,149	2,569	2,386	2,168	2,482	2490	2546	29,509	85,913	33,072	23,332	
BY-19	953	827	900	826	778	691	880	959	702	761	782	802.32	9,859	23,934	9,383	4,691	
BY-20	727	604	654	609	560	480	583	524	462	477	429	425.77	6,533	30,005	9,282	14,190	
BY-21	1,222	952	1,312	1212	1,186	882	1,252	1,222	1,021	1,102	900	984.25	13,246	25,554	8,533	3,775	
BY-22	2,620	2,321	2,462	2196	1,954	1,709	2,443	2,466	1,982	2,361	2269	2309.8	27,093	83,045	33,387	22,565	
BY-23	395	563	635	546	478	516	631	1,660	2,159	2,460	2503	2786.8	15,333	20,004	4,405	266	
BY-24	1,219	1,037	1,264	1120	1,214	1,021	673	1,275	1,083	1,186	1162	1230.3	13,484	44,896	15,265	13,497	2,650
BY-25	2,692	2,453	2,642	2576	2,678	2,333	2,638	2,786	2,162	2,457	2522	2391.2	30,331	76,874	33,282	13,260	
BY-26	2,810	2,379	2,633	2466	2,532	2,251	2,580	2,622	2,199	2,610	2561	2803.2	30,446	81,713	33,167	18,099	
Field Total:	38322	34676	38416	36945	37835	32946	38467	38767	34985	38679	37515	38232	445,787	3,146,973	439,615	404,621	298,781
Daily Avg.(mmscfd)	1236	1238	1239	1232	1220	1098	1,241	1,251	1,166	1,248	1,250	1,233	1,221		14,181	13,052	9,638
Field :	Chattak																
Ch-1	Production Suspended														25,834		
Field Total:															25,834		
Daily Avg.(mmscfd)																	
Field :	Fenchuganj																
Fenchuganj-2	0	0	0	0	0	0	0	0	0	0	0	0	0	38,169	0	0	0
Fenchuganj-3	599	539	591	572	604	578	632	549	376	385	372	396	6,192	87,452	7,606	7,564	7,755
Fenchuganj-4	117	92	71	57	46	45	13	0	0	0	0	0	441	28,465	3,189	5,834	6,182

Monthly Production by Field and Well upto Decemberr 2017



Well	Jan	Feb	Mar	Apr	May	Jun	Jul	Aug	Sep	Oct	Nov	Dec	Total	Cumulative	2016	2015	2014
Field Total:	715	630	662	630	650	623	645	549	376	385	372	396	6,633	154,086	10,795	13,398	13,937
Daily Avg.(mmscfd)	23	23	21	21	21	21	21	18	13	12	12	13	18		348	432	450
Field :	Feni																
Feni-1	Production Suspended													34,214			
Feni-2	Production Suspended													6,119			
Feni-3	Production Suspended													2,176			
Feni-4	Production Suspended													14,386			
Feni-5	Production Suspended													6,127			
Field Total:														63,023			
Daily Avg.(mmscfd)																	
Field :	Habiganj																
Hbj-1	0	0	0	0	0	0	0	0	0	0	0	0	0	275,901	0	0	0
Hbj-2	0	0	0	0	0	0	0	0	0	0	0	0	0	275,704	0	0	0
Hbj-3	1,122	1,012	1,117	1,081	1,116	1,077	1,118	1,116	1,074	1,117	1,083	1,119	13,151	364,002	13,227	13,080	13,075
Hbj-4	1,122	1,012	1,117	1,081	1,116	1,077	1,118	1,116	1,074	1,117	1,083	1,119	13,151	358,460	13,227	13,080	13,075
Hbj-5	810	731	807	780	806	778	807	806	776	807	782	808	9,497	288,178	9,552	9,446	9,442
Hbj-6	469	422	466	451	466	450	467	466	449	466	452	467	5,491	156,723	5,523	5,462	5,460
Hbj-7	1,245	1,128	1,256	1,204	1,240	1,203	1,237	1,236	1,126	1,246	1,199	1,245	14,565	238,586	14,685	14,659	14,586
Hbj-8	0	0	0	0	0	0	0	0	0	0	0	0	0	11,023	0	0	
Hbj-9	0	0	0	0	0	0	0	0	0	0	0	0	0	52,652	0	0	
Hbj-10	1,194	1,085	1,209	1,159	1,194	1,158	1,190	1,190	1,129	1,199	1,154	1,199	14,058	239,205	14,629	14,659	14,586
Hbj-11	901	818	911	873	899	872	897	896	839	841	810	841	10,398	86,729	11,247	11,367	11,311
Field Total:	6,863	6,207	6,882	6,629	6,837	6,614	6,833	6,826	6,467	6,794	6,563	6,799	80,313	2,347,161	82,091	81,752	81,534
Daily Avg.(mmscfd)	221	222	222	221	221	220	220	220	216	219	219	219	220		2,648	2,637	2,630
Field :	Jalalabad																
JB-1	939	851	869	821	831	701	657	611	539	605	736	983	9,142	235,300	11,951	18,014	18,100
JB-2	1,363	1,198	1,280	1,233	1,252	1,201	1,187	1,222	1,062	1,211	1,153	1,154	14,517	266,623	17,057	20,012	21,651
JB-3	1,775	1,600	1,736	1,667	1,663	1,399	1,489	1,650	1,464	1,635	1,543	1,539	19,162	323,125	21,086	26,552	26,644
JB-4	602	511	609	590	625	586	578	611	540	605	586	600	7,045	273,179	8,313	20,427	23,077

Monthly Production by Field and Well upto Decemberr 2017



Well	Jan	Feb	Mar	Apr	May	Jun	Jul	Aug	Sep	Oct	Nov	Dec	Total	Cumulative	2016	2015	2014
JB-6	1,778	1,600	1,736	1668	1,670	1,641	1605	1,650	1,453	1,635	1,549	1,539	19,524	41,960	19,136	3,300	
JB-7	623	623	731	699	692	850	879	1,070	934	1,060	1,027	1,137	10,324	16,337	5,254	760	
JB-8	1,339	1,196	1,310	1256	1,252	1,201	1197	1,222	1,066	1,211	1,132	1,131	14,513	31,137	16,252	372	
Field Total:	8,418	7,579	8,272	7,933	7,986	7,579	7,592	8,038	7,059	7,962	7,726	8,083	94,226	1,187,662	99,048	89,437	89,473
Daily Avg.(mmscfd)	272	271	267	264	258	253	245	259	235	257	258	261	258		3,195	2,885	2,886
Field :	Kailas Tila																
KTL-1	0	0	0	0	0	0	0	0	0	0	0	0	0	204,347	0	0	1,122
KTL-2	636	572	531	619	635	608	628	577	596	620	599	621	7,242	170,956	7,282	7,111	7,064
KTL-3	281	254	237	273	281	272	280	279	270	280	270	279	3,255	134,873	5,003	5,920	5,907
KTL-4	310	280	292	293	301	323	331	329	311	320	293	297	3,680	92,759	3,499	4,009	4,493
KTL-5	0	0	0	0	0	0	0	0	0	0	0	0	0	17,923	0	0	322
KTL-6	784	712	678	772	798	754	781	768	752	774	747	766	9,086	82,139	8,975	8,732	8,685
KTL-7	0	0	0	0	0	0	0	0	0	0	0	0	0	816	329	487	
Field Total:	2,011	1,818	1,738	1,957	2,015	1,957	2,020	1,953	1,930	1,994	1,909	1,963	23,263	703,813	25,088	26,259	27,592
Daily Avg.(mmscfd)	65	59	56	65	65	65	65	63	64	64	64	63	64		809	847	890
Field :	Kamta																
Kamta-1	Production Suspended													21,139			
Field Total:														21,139			
Daily Avg.(mmscfd)																	
Field :	Meghna																
M-1	383	354	395	383	395	381	394	389	379	394	382	396	4,625	64,435	4,425	3,838	3,707
Field Total:	383	354	395	383	395	381	394	389	379	394	382	396	4,625	64,435	4,425	3,838	3,707
Daily Avg.(mmscfd)	12	13	13	13	13	13	13	13	13	13	13	13	13		143	124	120
Field :	Moulavi Bazar																
MV Bazar-2	252	239	259	235	255	208	243	267	221	247	232	208	2,866	51,736	3,201	2,889	1,814
MV Bazar-3	399	408	446	361	414	334	394	440	360	400	378	370	4,705	154,097	5,394	6,116	7,319
MV Bazar-4	355	325	361	330	347	288	339	385	380	291	272	273	3,945	54,964	4,141	2,927	2,079
MV Bazar-5	Production Suspended						0	0	0	0	0	0	0	66			
MV Bazar-6	128	151	176	170	166	119	133	90	26	181	162	173	1,676	14,615	1,737	2,198	2,407

Monthly Production by Field and Well upto Decemberr 2017



Well	Jan	Feb	Mar	Apr	May	Jun	Jul	Aug	Sep	Oct	Nov	Dec	Total	Cumulative	2016	2015	2014
MV Bazar-7	14	29	24	15	15	7	11	9	8	8	6	7	152	5,623	123	1,433	1,487
MV Bazar-9	0	0	0	0	0	0	0	0	0	0	0	0	0	30,334	41	474	9,041
Field Total:	1,149	1,152	1,266	1,111	1,198	956	1,120	1,192	995	1,127	1,050	1,030	13,345	311,436	14,638	16,037	24,147
Daily Avg.(mmscfd)	37	41	41	37	39	32	36	38	33	36	35	33	37		472	517	779
Field :	Narshingdi																
N-1	533	479	529	517	534	516	538	536	518	529	517	533	6,279	138,414	6,242	6,239	6,208
N-2	341	310	350	333	347	329	339	340	329	330	303	312	3,962	51,665	4,122	3,914	3,969
Field Total:	875	789	879	850	881	845	877	875	847	859	820	845	10,241	190,078	10,364	10,154	10,177
Daily Avg.(mmscfd)	28	28	28	28	28	28	28	28	28	28	27	27	28		334	328	328
Field :	Rashidpur																
RP-1	560	508	559	537	561	541	566	541	552	569	557	575	6,625	160,557	6,639	6,423	6,633
RP-2	Production Suspended					0	0	0	0	0	0	0		82,474			
RP-3	319	291	322	311	322	313	315	314	302	313	299	310	3,730	127,667	3,877	4,177	4,420
RP-4	314	284	315	297	303	293	295	291	283	268	284	291	3,516	124,668	3,675	3,683	3,687
RP-5	Production Suspended										0	0		25,647			
RP-6	0	0	0	0	0	0	0	0	0	0	0	0	0	9,983	0	0	0
RP-7	190	171	188	181	192	186	189	187	183	191	180	187	2,225	62,229	2,355	2,236	2,226
RP-8	369	324	354	329	336	324	335	337	322	323	307	317	3,977	15,337	4,422	5,115	1,822
Field Total:	1,751	1,578	1,738	1,655	1,715	1,656	1,701	1,669	1,641	1,663	1,627	1,680	20,074	608,563	20,969	21,634	18,788
Daily Avg.(mmscfd)	56	56	56	55	55	55	55	54	55	54	54	54	55		676	698	606
Field :	Salda Nadi																
Salda-1	0	0	0	0	0		0	0	0	0	0	0	0	36,904	0	0	0
Salda-2	0	0	0	0	0		0	0	0	0	0	0	0	28,495	0	0	0
Salda-3	146	125	137	134	138	132	128	117	118	119	112	107	1,514	24,513	2,350	3,546	4,891
Salda-4	3	0	2	1	0	3	0	2	0	0	1	2	14	47	34		
Field Total:	149	125	139	135	138	135	128	120	118	119	113	109	1,527	89,959	2,383	3,546	4,891
Daily Avg.(mmscfd)	5	4	4	4	4	4	4	4	4	4	4	4	4		77	114	158
Field :	Sangu																

Monthly Production by Field and Well upto Decemerr 2017



Well	Jan	Feb	Mar	Apr	May	Jun	Jul	Aug	Sep	Oct	Nov	Dec	Total	Cumulative	2016	2015	2014
Sangu-1	0	0	0	0	0	0	0	0	0	0	0	0	0	116,191	0	0	0
Sangu-3z	0	0	0	0	0	0	0	0	0	0	0	0	0	131,796	0	0	0
Sangu-4	Production Suspended						0	0	0	0	0	0	0	87,280			
Sangu-5	Production Suspended						0	0	0	0	0	0	0	61,674			
Sangu-7	Production Suspended						0	0	0	0	0	0	0	18,202			
Sangu-8	Production Suspended						0	0	0	0	0	0	0	37,619			
Sangu-9	0	0	0	0	0	0	0	0	0	0	0	0	0	30,638	0	0	0
Sangu-10	Production Suspended						0	0	0	0	0	0	0				
Sangu-11	0	0	0	0	0	0	0	0	0	0	0	0	0	6,067	0	0	0
Field Total:	0	0	0	0	0	0	0	0	0	0	0	0	0	489,467	0	0	0
Daily Avg.(mmscfd)	0	0	0	0	0	0	0	0	0	0	0	0	0		0	0	0
Field :	Semutang																
Semutang-5	70	57	59	45	46	36	29	25	14	15	38	35	471	11,775	946	1,389	1,964
Semutang-6	0	0	0	0	0	0	0	0	16	23	15	13	66	872	0	15	791
Field Total:	70	57	59	45	46	36	29	25	30	38	53	48	537	12,646	946	1,403	2,755
Daily Avg.(mmscfd)	2	2	2	1	1	1	1	1	1	1	2	2	1		31	45	89
Field :	Shahbazpur																
Shahbazpur-1	357	340	375	351	365	399	441	465	443	455	443	400	4,835	21,224	3,623	2,268	1,931
Shahbazpur-2	0	0	0	0	0	277	666	737	700	717	679	468	4,243	4,432	189	0	0
Shahbazpur-3	263	213	234	179	111	162	0	0	0	0	0	0	1,162	7,104	3,116	2,826	
Shahbazpur-4	254	352	401	311	296	187	0	0	0	0	0	0	1,801	6,067	1,091	3,175	
Field Total:	874	905	1,011	841	773	1,026	1,107	1,201	1,143	1,171	1,122	868	12,041	38,827	8,019	8,269	1,931
Daily Avg.(mmscfd)	28	32	33	28	25	34	36	39	38	38	37	28	33		259	267	62
Field	Srikail																
Srikail-2	490	441	490	460	458	421	432	424	431	444	433	461	5,384	32,790	6,064	6,150	7,414
Srikail-3	460	414	442	419	427	408	412	407	393	397	384	380	4,944	30,558	6,607	7,919	7,611

Monthly Production by Field and Well upto Decemberr 2017



Well	Jan	Feb	Mar	Apr	May	Jun	Jul	Aug	Sep	Oct	Nov	Dec	Total	Cumulative	2016	2015	2014
Srikail-4	295	267	288	290	302	297	308	289	282	281	272	267	3,439	5,475	2,035		
Field Total:	1,245	1,122	1,220	1,169	1,187	1,127	1,153	1,120	1,106	1,122	1,089	1,109	13,767	68,822	14,707	14,070	15,025
Daily Avg.(mmscfd)	40	40	39	39	38	38	37	36	37	36	36	36	38		474	454	485
Field :	Sundalpur																
Sundalpur -1	0	0	0	0	0	0	0	0	0	0	0	0	0	9,809	552	1,425	1,709
Sundalpur -2	0	0	0	0	0	0	0	0	0	0	0	0	0	0	0	0	0
Field Total:	0	0	0	0	0	0	0	0	0	0	0	0	0	9,809	552	1,425	1,709
Daily Avg.(mmscfd)	0	0	0	0	0	0	0	0	0	0	0	0	0		18	46	55
Field :	Sylhet																
Sylhet-3	Production Suspended													89,032			
Sylhet-6	Production Suspended													91,748			
Sylhet-7	191	171	186	177	184	183	188	170	161	158	144	147	2,061	25,369	2,212	2,239	2,303
Surma-1	56	50	55	54	34	0	0	0	0	0	0	0	249	6,528	720	791	804
Field Total:	247	221	241	231	218	183	188	170	161	158	144	147	2,309	212,677	2,932	3,031	3,107
Daily Avg.(mmscfd)	8	8	8	8	7	6	6	5	5	5	5	5	6		95	98	100
Field :	Titas																
Titas-1	323	581	645	642	727	678	715	711	685	742	719	728	7,897	431,113	9,999	10,555	11,345
Titas-2	1,009	890	965	921	927	892	964	990	941	1,020	1,001	987	11,506	423,983	11,474	13,015	12,764
Titas-3	Production Suspended													314,888			
Titas-4	1,022	934	1,029	999	1,020	960	997	990	851	1,019	999	978	11,798	358,725	12,782	12,882	12,982
Titas-5	1,022	933	1,028	985	992	948	991	986	945	1,046	1,000	994	11,869	416,414	10,692	13,118	14,066
Titas-6	1,043	948	1,039	1013	1,018	967	1022	1,001	945	1,039	994	1,000	12,029	351,098	12,809	12,958	13,265
Titas-7	949	888	1,011	968	1,006	972	987	979	950	977	981	1,038	11,707	332,946	12,125	12,259	12,866
Titas-8	602	559	622	599	614	589	599	579	548	554	511	514	6,889	266,482	7,046	7,162	7,491
Titas-9	715	653	717	687	705	670	701	709	682	681	650	676	8,246	269,784	8,467	8,355	8,129
Titas-10	621	562	624	602	616	601	621	621	606	665	639	654	7,431	191,389	4,350	2,425	1,892
Titas-11	880	799	889	846	851	821	857	854	837	897	859	885	10,276	236,903	9,075	10,129	10,873
Titas-12	439	403	447	429	451	427	449	439	413	437	422	411	5,168	95,615	5,326	5,218	5,081
Titas-13	723	643	711	666	696	661	665	655	601	625	607	627	7,879	183,140	9,553	10,106	10,154
Titas-14	720	650	719	685	708	672	706	703	671	707	674	694	8,309	142,783	8,888	9,582	9,042
Titas-15	950	846	930	898	930	894	924	918	382	0	0	301	7,973	133,970	11,777	12,315	12,333

Monthly Production by Field and Well upto Decemberr 2017



Well	Jan	Feb	Mar	Apr	May	Jun	Jul	Aug	Sep	Oct	Nov	Dec	Total	Cumulative	2016	2015	2014
Titas-16	891	816	905	885	889	816	847	831	786	825	782	787	10,060	137,741	11,333	11,966	12,452
Titas-17	620	559	612	596	613	585	593	593	561	566	551	561	7,011	33,168	7,359	7,080	7,210
Titas-18	619	557	612	595	613	584	594	607	590	605	589	603	7,168	31,342	7,338	7,075	7,280
Titas-19	533	484	521	484	506	500	536	518	500	518	495	512	6,106	21,934	6,253	6,309	3,266
Titas-20	308	280	308	300	306	291	302	309	297	313	308	314	3,635	14,913	3,645	3,604	3,445
Titas-21	233	214	242	226	232	222	232	238	235	239	237	250	2,800	6,236	1,572	0	1,843
Titas-22	387	345	376	365	379	350	335	353	346	373	357	371	4,336	20,260	5,497	6,468	3,960
Titas-27	527	476	527	502	528	508	525	524	499	517	497	505	6,136	23,012	6,233	6,193	4,450
Titas-23	0	0	153	453	463	448	464	461	447	516	503	503	4,410	4,410			
Titas-24	0	0	86	270	238	251	249	246	237	241	226	239	2,283	2,283			
Titas-25	459	408	447	443	460	449	468	471	462	520	507	527	5,622	5,891	269		
Titas-26	771	690	765	690	775	760	780	781	761	827	797	814	9,210	9,593	383		
Field Total:	16,366	15,118	16,930	16,751	17,259	16,517	17,123	17,069	15,776	16,469	15,905	16,474	197,756	4,460,015	184,246	188,773	162,082
Daily Avg.(mmscfd)	528	540	546	558	557	551	552	551	526	531	530	531	542		5,943	6,089	5,228
Field :	Begumganj																
Begumganj-3	0	0	0	0	0	0	0	0	0	0	0	0	0	877	85	791	
Field Total:	0	0	0	0	0	0	0	0	0	0	0	0	0	877	85	791	
Daily Avg.(mmscfd)	0	0	0	0	0	0	0	0	0	0	0	0	0		3	26	
Field :	Rupganj																
Rupganj-1	0	0	22	159	155	95	155	56	28	9	0	0	679	679			
Field Total:	0	0	22	159	155	95	155	56	28	9	0	0	679	679			
Daily Avg.(mmscfd)	0	0	1	5	5	3	5	2	1	0	0	0	2				
Grand Total (in Bcf)	83.88	76.67	84.62	81.95	83.84	77.06	84.01	84.45	77.09	83.28	80.56	82.42	979.8	15,494.4	973.1	945.3	816.2
Daily Avg.(mmscfd)	2,706	2,738	2,730	2,732	2,704	2,569	2,710	2,724	2,570	2,687	2,685	2,659	2,684		2,666	2,590	2,236

Monthly Condensate Production by Fields upto December 2017



Figures in bbl

Field Name	Jan-17	Feb-17	Mar-17	Apr-17	May-17	Jun-17	Jul-17	Aug-17	Sep-17	Oct-17	Nov-17	Dec-17	Total	Cumulative 000' bbl	2016	2015	2014	
Bakhrabad	660	562	620	587	519	404	403	425	437	472	526	558	6,173	1,015	7,091	6,632	6,019	
Daily Avg.	21	20	20	20	17	13	13	14	15	15	18	18	17		229	214	194	
Bangura	8,845	8,306	8,853	8,591	8,935	8,533	8,699	8,623	7,807	8,723	8,508	8,775	103,198	971	103,416	108,140	112,273	
Daily Avg.	285	297	286	286	288	284	281	278	260	281	284	283	283		3,336	3,488	3,622	
Beani Bazar	6,698	6,478	7,237	6,566	6,358	5,814	5,599	5,354	4,757	4,542	4,300	4,497	68,202	1,516	56,146	55,563	56,917	
Daily Avg.	216	231	233	219	205	194	181	173	159	147	143	145	187		1,811	1,792	1,836	
Bibiyana	293,319	262,434	258,715	258,411	280,320	246,778	263,529	295,504	265,473	294,271	282,052	282,950	3,283,757	17,887	3,291,906	2,277,248	1,272,806	
Daily Avg.	9,462	9,373	8,346	8,614	9,043	8,226	8,501	9,532	8,849	9,493	9,402	9,127	8,997		106,191	73,460	41,058	
Chattak	Production Suspended														4			
Daily Avg.																		
Fenchuganj	319	263	236	245	257	193	187	177	140	151	147	148	2,462	113	6,138	8,895	9,429	
Daily Avg.	10	9	8	8	8	6	6	6	5	5	5	5	7		198	287	304	
Feni	Production Suspended													0	110	0	0	0
Daily Avg.														0		0	0	0
Habiganj	303	287	327	338	319	311	353	362	315	369	333	338	3,955	124	4,143	4,075	3,997	
Daily Avg.	10	10	11	11	10	10	11	12	10	12	11	11	11		134	131	129	
Jalalabad	42,661	37,189	41,110	38,279	38,143	35,057	35,564	35,609	30,246	34,290	33,857	35,065	437,070	9,772	528,191	577,549	616,725	
Daily Avg.	1,376	1,328	1,326	1,276	1,230	1,169	1,147	1,149	1,008	1,106	1,129	1,131	1,197		17,038	18,631	19,894	
Kailas Tila	18,528	15,227	14,702	16,277	17,224	17,410	19,508	17,878	18,353	16,642	16,094	16,137	203,979	7,605	223,169	250,829	270,121	
Daily Avg.	598	544	474	543	556	580	629	577	612	537	536	521	559		7,199	8,091	8,714	
Kamta	Production Suspended														4			
Daily Avg.															0			
Meghna	636	594	642	645	672	628	644	669	634	677	642	657	7,741	99	7,735	6,952	6,606	
Daily Avg.	21	21	21	22	22	21	21	22	21	22	21	21	21		250	224	213	
Moulavi Bazar	94	96	128	107	105	67	81	94	69	77	95	115	1,128	116	1,585	1,606	2,672	
Daily Avg.	3	3	4	4	3	2	3	3	2	2	3	4	3		51	52	86	

Monthly Condensate Production by Fields upto December 2017



Figures in bbl

Field Name	Jan-17	Feb-17	Mar-17	Apr-17	May-17	Jun-17	Jul-17	Aug-17	Sep-17	Oct-17	Nov-17	Dec-17	Total	Cumulative 000' bbl	2016	2015	2014
Narshingdi	1,497	1,347	1,461	1,373	1,390	1,354	1,403	1,406	1,315	1,403	1,344	1,363	16,656	402	17,534	17,840	19,547
Daily Avg.	48	48	47	46	45	45	45	45	44	45	45	44	46		566	575	631
Rashidpur	925	782	876	798	812	893	1,010	989	939	913	834	952	10,723	762	14,938	17,853	19,629
Daily Avg.	30	28	28	27	26	30	33	32	31	29	28	31	29		482	576	633
Saldanadi	27	24	21	18	18	19	20	21	19	20	18	0	225	58	386	550	919
Daily Avg.	1	1	1	1	1	1	1	1	1	1	1	0	1		12	18	30
Sangu	0	0	0	0	0	0	0	0	0	0	0	0	0	37	0	0	0
Daily Avg.	0	0	0	0	0	0	0	0	0	0	0	0	0		0	0	0
Semutang	15	17	13	10	10	9	2	0	0	0	6	17	99	5	272	531	597
Daily Avg.	0	1	0	0	0	0	0	0	0	0	0	1	0		9	17	19
Shahbazpur	97	91	114	102	87	136	220	205	199	209	187	143	1,791	4	839	816	118
Daily Avg.	3	3	4	3	3	5	7	7	7	7	6	5	5		27	26	4
Srikail	3,529	3,174	3,408	3,098	3,241	3,063	2,971	3,091	3,091	3,105	3,054	3,054	37,879	94	21,075	10,527	13,981
Daily Avg.	114	113	110	103	105	102	96	100	103	100	102	99	104		680	340	451
Sundalpur	0	0	0	0	0	0	0	0	0	0	0	0	0	0	0	39	33
Daily Avg.	0	0	0	0	0	0	0	0	0	0	0	0	0		0	1	1
Sylhet	1,717	1,568	1,656	1,563	1,475	1,337	1,382	776	1,159	1,072	918	968	15,593	785	20,532	22,261	23,292
Daily Avg.	55	56	53	52	48	45	45	25	39	35	31	31	43		662	718	751
Titas	12,673	11,938	13,367	13,154	13,089	12,397	13,027	12,866	11,602	12,228	12,894	15,026	154,262	5,064	133,133	134,637	147,395
Daily Avg.	409	426	431	438	422	413	420	415	387	394	430	485	423		4,295	4,343	4,755
Begumganj	0	0	0	0	0	0	0	0	0	0	0	0	0	0	0	143	
Daily Avg.	0	0	0	0	0	0	0	0	0	0	0	0	0		0	5	
Rupganj	0	0	21	321	344	167	197	59	20	4	0	0	1,133	1			
Daily Avg.	0	0	1	11	11	6	6	2	1	0	0	0	3				
Total (000'bbl)	393	350	354	350	373	335	355	384	347	379	366	371	4,356	46,549	4,438	3,499	2,581
Daily Avg. (000'bbl)	12.7	12.5	11.4	11.7	12.0	11	11.4	12.4	11.6	12.2	12	12	12		12.2	9.6	7.1

Note: Historical condensate figure of Sangu available from 2006. Sylhet available from August 1964

Monthly Water Production by Fields in December 2017



Field Name	Jan-17	Feb-17	Mar-17	Apr-17	May-17	Jun-17	Jul-17	Aug-17	Sep-17	Oct-17	Nov-17	Dec-17	Total
Bakhrabad										2,821	2,746	2,852	8,419
Daily Avg.										91	92	92	25
Bangura										3,903	3,837	3,965	11,705
Daily Avg.										126	128	128	35
Beani Bazar										8,692	7,790	8,383	24,865
Daily Avg.										280	260	270	74
Bibiyana										15,487	15,598	16,134	47,219
Daily Avg.										500	520	520	141
Chattak													
Daily Avg.										0	0	0	
Fenchuganj										2,050	2,203	2,448	6,700
Daily Avg.										66	73	79	20
Feni													0
Daily Avg.										0	0	0	0
Habiganj										1,763	1,682	1,752	5,197
Daily Avg.										57	56	57	16
Jalalabad										4,255	4,426	4,234	12,915
Daily Avg.										137	148	137	39
Kailas Tila										2,234	2,136	2,439	6,809
Daily Avg.										72	71	79	20
Kamta													
Daily Avg.										0	0	0	
Meghna										184	180	187	551
Daily Avg.										6	6	6	2
Moulavi Bazar										208	247	299	754
Daily Avg.										7	8	10	2
Narshingdi										909	853	883	2,645
Daily Avg.										29	28	28	8
Rashidpur										10,362	10,138	10,469	30,969
Daily Avg.										334	338	338	93
Saldanadi										197	190	0	387
Daily Avg.										6	6	0	1

Monthly Water Production by Fields in December 2017



Field Name	Jan-17	Feb-17	Mar-17	Apr-17	May-17	Jun-17	Jul-17	Aug-17	Sep-17	Oct-17	Nov-17	Dec-17	Total
Sangu												0	0
Daily Avg										0	0	0	0
Semutang										27	257	435	719
Daily Avg										1	9	14	2
Shahbazpur										1,422	1,399	1,091	3,912
Daily Avg.										46	47	35	12
Srikail										1,676	1,620	1,608	4,904
Daily Avg.										54	54	52	15
Sundalpur										0		0	0
Daily Avg.										0	0	0	0
Sylhet										221	379	697	1,298
Daily Avg.										7	13	22	4
Titas										41,228	40,684	44,422	126,334
Daily Avg.										1,330	1,356	1,433	378
Begumganj										0	0	0	0
Daily Avg.										0	0	0	0
Rupganj										34	0	0	34
Daily Avg.										1	0	0	0
Total (000' bbl)										98	96	102	296
Daily Avg. (000' bbl)										3.2	3.2	3.3	1

Conditions of Field and Well upto December 2017



Well	company	well type	Discovery	production start	Drilled depth (ft)	Pressure	Pressure type	Completion Zone
Field : Bakharabad								
BKB-1	BGFCL	Vertical	1969	June,1969	9309		FWHP	J
BKB-2	BGFCL	Directional	1969	October,1981	7496	248-274	FWHP	G
BKB-3	BGFCL	Directional	1969	April,1982	9339	356-412	FWHP	G
BKB-4	BGFCL	Directional	1969	June,1982	9430			D
BKB-5	BGFCL	Directional	1969	Sept,1982	9675	1555-1646	FWHP	B
BKB-6	BGFCL	Directional	1969	March,1989	8785			J
BKB-7	BGFCL	Directional	1969	July,1989	8605		FWHP	J
BKB-8	BGFCL	Directional	1969	Sept,1989	8840	490-523	FWHP	J
BKB-9	BGFCL	Vertical	1969	August,2013	8318	1005-1097	FWHP	G
BKB-10	BGFCL	Directional	1969	June,2016	9291	1010-1102	FWHP	K
Field : Bangura								
Bangura-1	Tullow		2004			887-940	FWHP	D
Bangura-2	Tullow		2004			587-685	FWHP	D/E
Bangura-3	Tullow		2004			719-789	FWHP	D
Bangura-6	Tullow		2004			708-780	FWHP	D
Bangura-5	Tullow		2004			579-621	FWHP	D
Field : Beani Bazar								
BB-1	SGFL		1981	July,1999	13480	580-620	SIWHP	Upper
BB-2	SGFL		1981	July,1999	12048	3210-3220	FWHP	Upper
Field : Bibiyana								
BY-1	Chevron		1998			1547-2007	FWHP	BB60, BB66
BY-2	Chevron		1998			1313-1390	FWHP	BB60, BH20A, BH20E
BY-3	Chevron		1998			1363-1403	FWHP	BB70
BY-4	Chevron		1998			1330-1390	FWHP	BH10
BY-5	Chevron		1998			1254-1299	FWHP	BH20A, BH20B, BH20C, BH20D
BY-6	Chevron		1998			1250-1486	FWHP	BB70
BY-7	Chevron		1998			1454-1566	FWHP	BH10
BY-8	Chevron		1998			1270-1297	FWHP	BH20A, BH20B
BY-9	Chevron		1998			1243-1273	FWHP	BH10
BY-10	Chevron		1998			1465-1533	FWHP	BB60
BY-11	Chevron		1998			1260-1284	FWHP	BH20A, BH20B
BY-12	Chevron		1998			1259-1332	FWHP	BB70
BY-13	Chevron		1998			1300-1356	FWHP	BH20A, BH20B
BY-14	Chevron		1998			1342-1632	FWHP	BH20A, BH20B
BY-15	Chevron		1998			2189-2240	FWHP	BB60
BY-16	Chevron		1998			1381-1644	FWHP	BH10, BH20D

Conditions of Field and Well upto December 2017



Well	company	well type	Discovery	production start	Drilled depth (ft)	Pressure	Pressure type	Completion Zone
BY-17	<i>Chevron</i>		1998			2104-2229	<i>FWHP</i>	<i>BB60</i>
BY-18	<i>Chevron</i>		1998			1904-2218	<i>FWHP</i>	<i>BB60</i>
BY-19	<i>Chevron</i>		1998			1354-1477	<i>FWHP</i>	<i>BH10, BH20A</i>
BY-20	<i>Chevron</i>		1998			1248-1262	<i>FWHP</i>	<i>BH20D, BH20A, BH10</i>
BY-21	<i>Chevron</i>		1998			1333-1348	<i>FWHP</i>	<i>BH20A, BH20B, BH10</i>
BY-22	<i>Chevron</i>		1998			1552-1586	<i>FWHP</i>	<i>BB60</i>
BY-23	<i>Chevron</i>		1998			1739-2021	<i>FWHP</i>	<i>BH10, BH20A, BH20B, BH20C</i>
BY-24	<i>Chevron</i>		1998			1337-2091	<i>FWHP</i>	<i>BB60</i>
BY-25	<i>Chevron</i>		1998			1728-1857	<i>FWHP</i>	<i>BB60, BB66</i>
BY-26	<i>Chevron</i>		1998			1877-2094	<i>FWHP</i>	<i>BB60, BB64</i>
Field : Chattak								
Ch-1	SGFL		1959					
Field : Fenchuganj								
Fenchuganj-2	<i>BAPEX</i>		1988	<i>May, 2004</i>				
Fenchuganj-3	<i>BAPEX</i>		1988	<i>January, 2005</i>		2004-2010		<i>upper</i>
Fenchuganj-4	<i>BAPEX</i>		1988			2037-2065		
Field : Feni								
Feni-1	<i>BAPEX</i>		1981					
Feni-2	<i>BAPEX</i>		1981					
Feni-3	<i>BAPEX</i>		1981					
Feni-4	<i>BAPEX</i>		1981					
Feni-5	<i>BAPEX</i>		1981					
Field : Habiganj								
Hbj-1	<i>BGFCL</i>	<i>Vertical</i>	1963	<i>Feb,1969</i>	11500		<i>FWHP</i>	<i>upper</i>
Hbj-2	<i>BGFCL</i>	<i>Vertical</i>	1963	<i>Feb,1969</i>	5100		<i>FWHP</i>	<i>upper</i>
Hbj-3	<i>BGFCL</i>	<i>Vertical</i>	1963	<i>July,1985</i>	5282	1478-1486	<i>FWHP</i>	<i>upper</i>
Hbj-4	<i>BGFCL</i>	<i>Vertical</i>	1963	<i>May,1985</i>	5249	1460-1467	<i>FWHP</i>	<i>upper</i>
Hbj-5	<i>BGFCL</i>	<i>Directional</i>	1963	<i>Feb,1992</i>	11552	1440-1446	<i>FWHP</i>	<i>upper</i>
Hbj-6	<i>BGFCL</i>	<i>Vertical</i>	1963	<i>Feb,1992</i>	5515	1375-1379	<i>FWHP</i>	<i>upper</i>
Hbj-7	<i>BGFCL</i>	<i>Vertical</i>	1963	<i>April,2000</i>	10236	1331-1139	<i>FWHP</i>	<i>upper</i>
Hbj-8	<i>BGFCL</i>	<i>Vertical</i>	1963	<i>May, 2000</i>	5280			<i>upper</i>
Hbj-9	<i>BGFCL</i>	<i>Vertical</i>	1963	<i>July,1998</i>	5249			<i>upper</i>
Hbj-10	<i>BGFCL</i>	<i>Vertical</i>	1963	<i>Apr, 2000</i>	5133	1322-1331	<i>FWHP</i>	<i>upper</i>
Hbj-11	<i>BGFCL</i>	<i>Vertical</i>	1963	<i>january,2008</i>	10499	1417-1423	<i>FWHP</i>	<i>upper</i>
Field : Jalalabad								
JB-1	<i>Chevron</i>		1989			1333-1436	<i>FWHP</i>	<i>BB60, BB50</i>

Conditions of Field and Well upto December 2017



Well	company	well type	Discovery	production start	Drilled depth (ft)	Pressure	Pressure type	Completion Zone
JB-2	Chevron		1989			1279-1294	FWHP	BB50, BB60
JB-3	Chevron		1989			1332-1375	FWHP	BB50, BB60
JB-4	Chevron		1989			1365-1425	FWHP	BB60
JB-6	Chevron		1989			1354-1362	FWHP	BB60, BB50
JB-7	Chevron		1989			1666-1679	FWHP	BB20
JB-8	Chevron		1989			1362-1370	FWHP	BB50, BB60
Field : Kailas Tila								
KTL-1	SGFL		1962	June, 1983	12417	0	SIWHP	
KTL-2	SGFL		1962	Feb, 1995		2225-2230	FWHP	
KTL-3	SGFL		1962	March, 1995		2470-2495	FWHP	
KTL-4	SGFL		1962	March, 1997		2360-2410	FWHP	
KTL-5	SGFL		1962	Sep, 2006		0	SIWHP	
KTL-6	SGFL		1962	Aug, 2007		2490-2495	FWHP	
KTL-7	SGFL		1962			0	SIWHP	
Field : Kamta								
Kamta-1	BGFCL	Vertical	1981	july,1982	11857			N/A
Field : Meghna								
M-1	BGFCL	Vertical	2004	july,1990	10069	1400-1450	FWHP	A,E,F & G
Field : Moulavi Bazar								
MV Bazar-2	Chevron		1997			800-820	FWHP	BB70
MV Bazar-3	Chevron		1997			800-820	FWHP	BB70
MV Bazar-4	Chevron		1997			946-952	FWHP	BB20
MV Bazar-5	Chevron		1997			0	SIWHP	BB60
MV Bazar-6	Chevron		1997			822-890	FWHP	BB20
MV Bazar-7	Chevron		1997			844-901	FWHP/SIWHP	BB20
MV Bazar-9	Chevron		1997			0	SIWHP	BB46, BB48, BB60
Field : Narshingdi								
N-1	BGFCL	vertical	1990	october,1990	11320	1143-1197	FWHP	BL
N-2	BGFCL	vertical	1990	february,2007	10778	1015-1097	FWHP	BL
Field : Rashidpur								
RP-1	SGFL		1960			1290-1291	FWHP	Upper
RP-2	SGFL		1960			73	SIWHP	Lower
RP-3	SGFL		1960			1548-1568	FWHP	Lower
RP-4	SGFL		1960			1450-1655	FWHP	Lower
RP-5	SGFL		1960			2291	SIWHP	Lower
RP-6	SGFL		1960			870	SIWHP	A

Conditions of Field and Well upto December 2017



HYDROCARBON UNIT

Energy & Mineral Resources Division

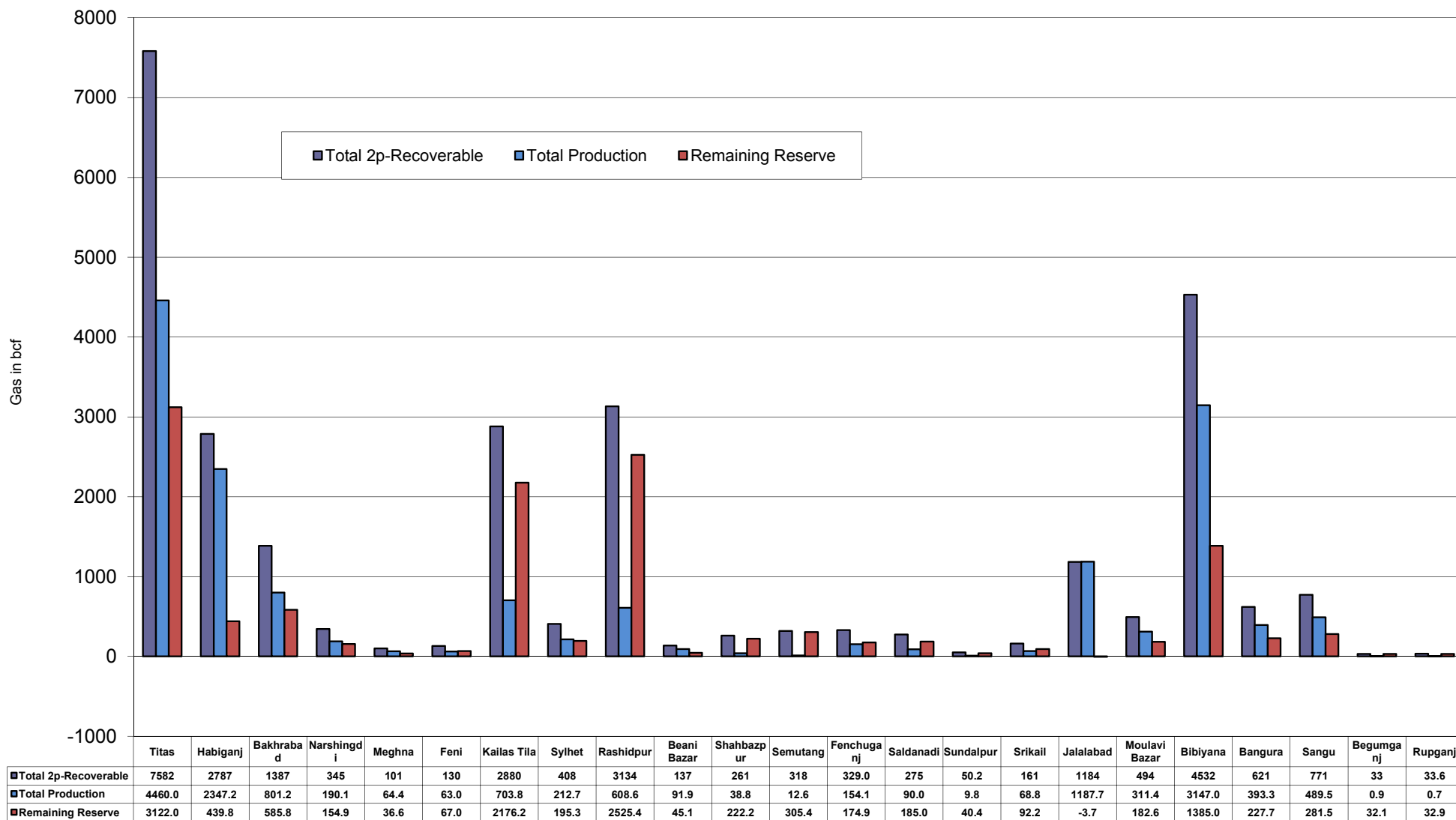
Well	company	well type	Discovery	production start	Drilled depth (ft)	Pressure	Pressure type	Completion Zone
RP-7	SGFL		1960			1308-1338	FWHP	Lower
RP-8	SGFL		1960			1600-1625	FWHP	Upper
Field : Salda Nadi								
Salda-1	BAPEX		1995					
Salda-2	BAPEX		1995					
Salda-3	BAPEX	Directional	1995	January, 2012		639-640, 698-700		Upper/Lower
Salda-4	BAPEX		1995					
Field : Sangu								
Sangu-1	BGFCL		1996					
Sangu-3z	BGFCL		1996					
Sangu-4	BGFCL		1996					
Sangu-5	BGFCL		1996					
Sangu-7	BGFCL		1996					
Sangu-8	BGFCL		1996					
Sangu-9	BGFCL		1996					
Sangu-10	BGFCL		1996					
Sangu-11	BGFCL		1996					
Field : Semutang								
Semutang-5	BAPEX		1967			280-508		Lower Zone
Semutang-6	BAPEX		1967			750-1302		
Field : Shahbazpur								
Shahbazpur-1	BAPEX		1995	May, 2009		2310-3543		Lower Zone
Shahbazpur-2	BAPEX		1995			3541-4133		Lower Zone
Shahbazpur-3	BAPEX		1995			4300		Upper Zone
Shahbazpur-4	BAPEX		1995			4250		Upper Zone
Field : Srikail								
Srikail-2	BAPEX		2012			990-1016		Upper & Lower D
Srikail-3	BAPEX		2012			981-1043		Upper & Lower D
Srikail-4	BAPEX		2012			1018-1068		Upper & Lower D
Field : Sundalpur								
Sundalpur -1	BAPEX		2011					
Sundalpur -2	BAPEX		2011					
Field : Sylhet								
Sylhet-3	SGFL		1955	Aug, 1958				
Sylhet-6	SGFL		1955	Aug, 1964		800-850	SIWHP	
Sylhet-7	SGFL		1955	Apr, 2005		1750-1820	FWHP	Lower Bokabil

Conditions of Field and Well upto December 2017

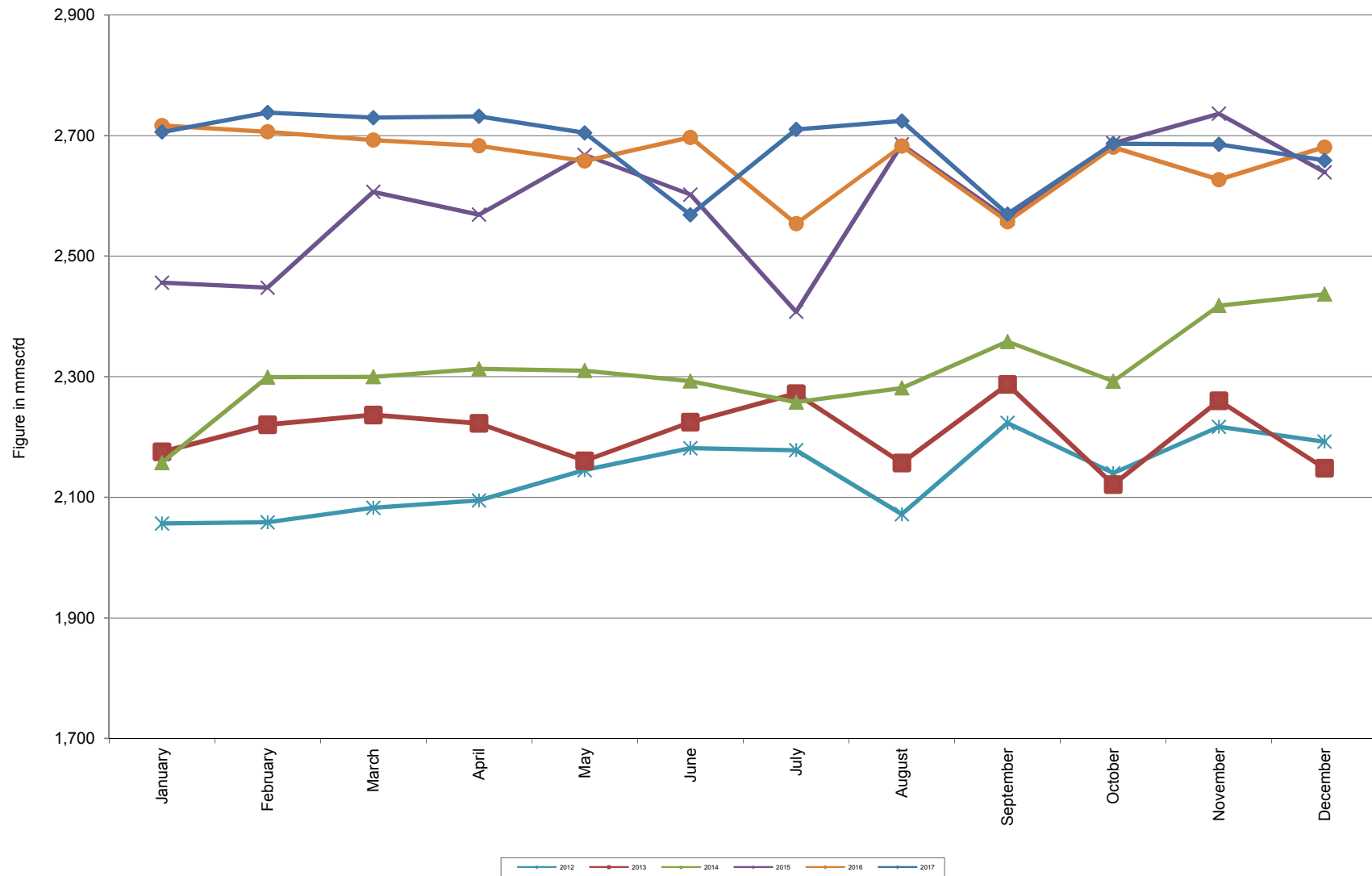


Well	company	well type	Discovery	production start	Drilled depth (ft)	Pressure	Pressure type	Completion Zone
Surma-1	SGFL		1955	June, 2010		230	SIWHP	C & D
Field :	Titas							
Titas-1	BGFCL	vertical	1962	Mar,1969	12325	900-925	FWHP	A
Titas-2	BGFCL	vertical	1962	Fen,1969	10574	960-1020	FWHP	A
Titas-3	BGFCL	vertical	1962	sept,1969	9315	0	FWHP	A
Titas-4	BGFCL	vertical	1962	oct,1969	9350	1020-1070	FWHP	A
Titas-5	BGFCL	Directional	1962	jan,1981	10805	990-1035	FWHP	A
Titas-6	BGFCL	vertical	1962	Feb,1984	10072	1195-1225	FWHP	A
Titas-7	BGFCL	Directional	1962	July,1985	11006	1090-1160	FWHP	A
Titas-8	BGFCL	Directional	1962	sept,1985	11760	1000-1030	FWHP	B & C
Titas-9	BGFCL	Directional	1962	jan,1988	11893	1040-1085	FWHP	B & C
Titas-10	BGFCL	Directional	1962	may,1988	12139	1140-1180	FWHP	A
Titas-11	BGFCL	vertical	1962	Jun,1991	10462	1275-1310	FWHP	A
Titas-12	BGFCL	Directional	1962	July,2002	9873	1465-1500	FWHP	A
Titas-13	BGFCL	Directional	1962	June,2000	11487	1085-1115	FWHP	A
Titas-14	BGFCL	Directional	1962	June,2000	11004	1200-1250	FWHP	A
Titas-15	BGFCL	vertical	1962	may,2006	10446	0	FWHP	A
Titas-16	BGFCL	Directional	1962	dec,2005	11673	1205-1225	FWHP	A
Titas-17	BGFCL	vertical	1962	feb,2013	9424	1145-1175	FWHP	A
Titas-18	BGFCL	Directional	1962	august,2013	10932	1165-1190	FWHP	A
Titas-19	BGFCL	Directional	1962	may,2014	12730	1365-1415	FWHP	A
Titas-20	BGFCL	Directional	1962	oct,2013	11585	1370-1440	FWHP	A
Titas-21	BGFCL	Directional	1962	dec,2013	11631	1260-1285	FWHP	A
Titas-22	BGFCL	Directional	1962	march,2014	11926	990-1025	FWHP	A
Titas-27	BGFCL	Directional	1962	april,2014	10292	1245-1265	FWHP	A
Titas-23	BGFCL	Directional	1962	feb,2017	11988	2265-2340	FWHP	C
Titas-24	BGFCL	Directional	1962	oct,2016	12686	1120-1245	FWHP	C
Titas-25	BGFCL	vertical	1962	march,2016	11680	1300-1340	FWHP	A
Titas-26	BGFCL	Directional	1962	july,2016	12618	1840-1875	FWHP	C
Field :	Begumganj							
Begumganj-3	BAPEX		1977					
Field :	Rupganj							
Rupganj-1	BAPEX		2014			38-88		

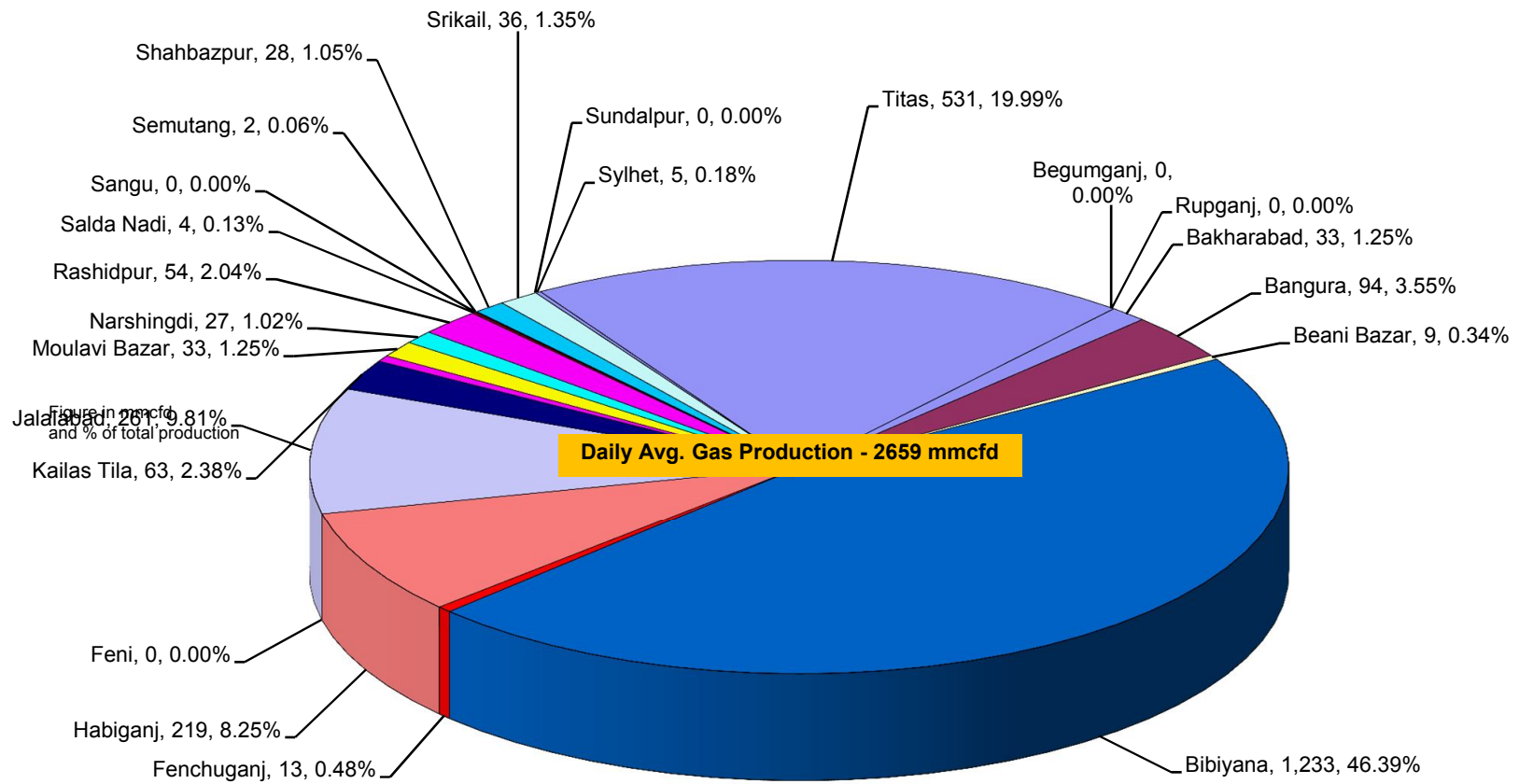
Reserve, Production and Remaining Reserve as of December 2017



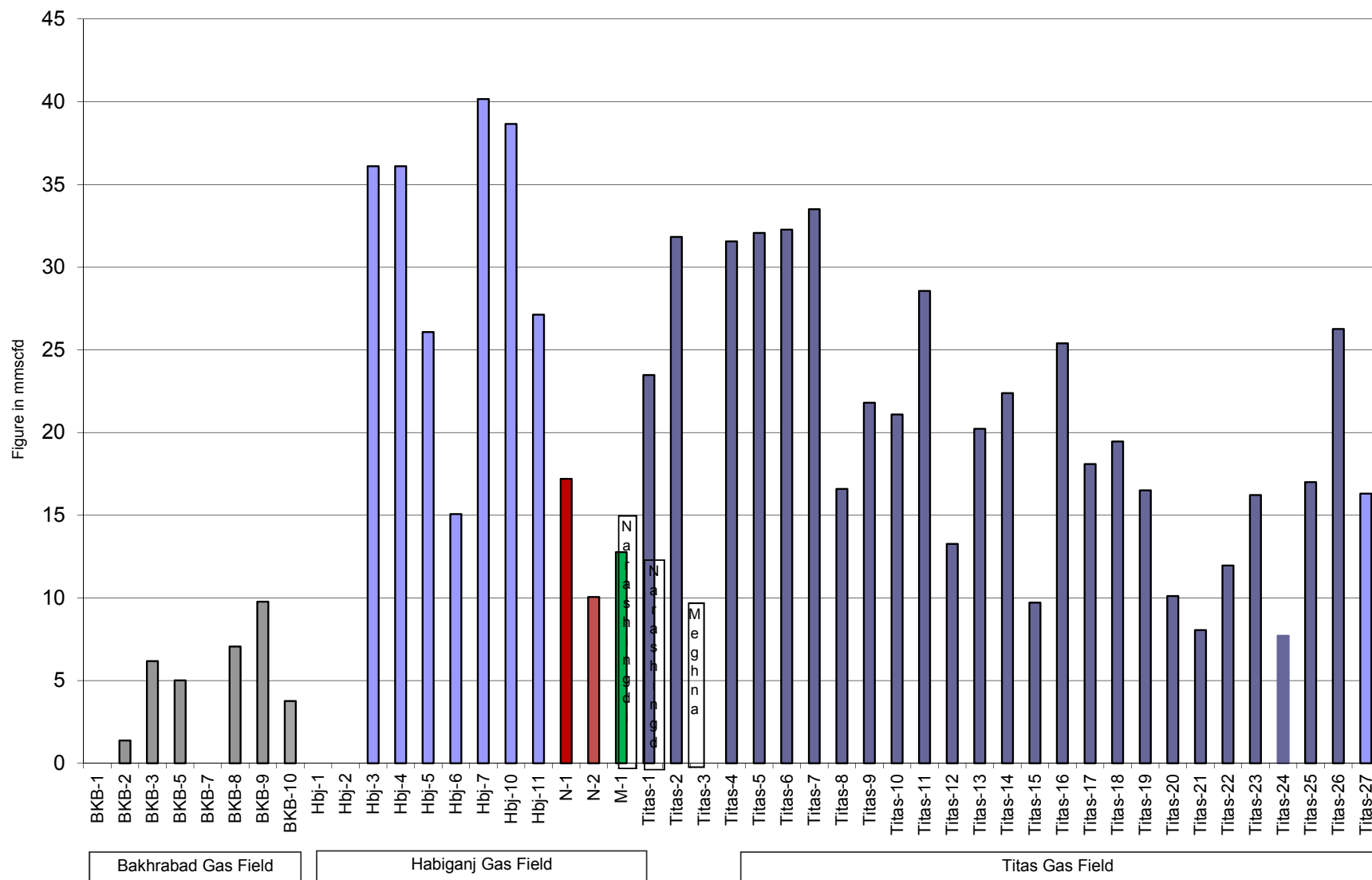
Daily Avg. Production From January 2012 to December 2017



Field Wise Daily Avg. Production December 2017

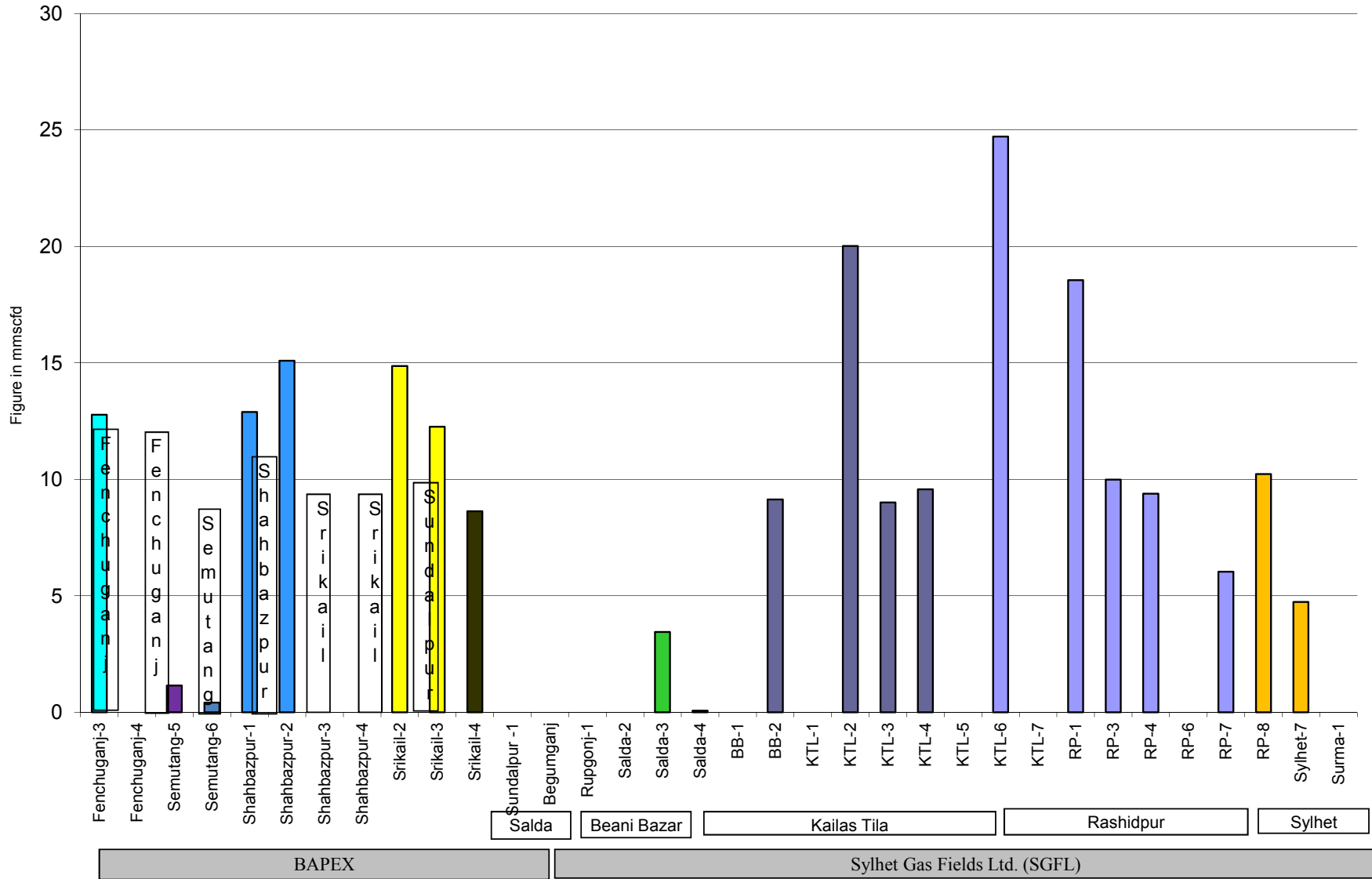


Wellwise Daily Avg. Production- BGFCL December 2017

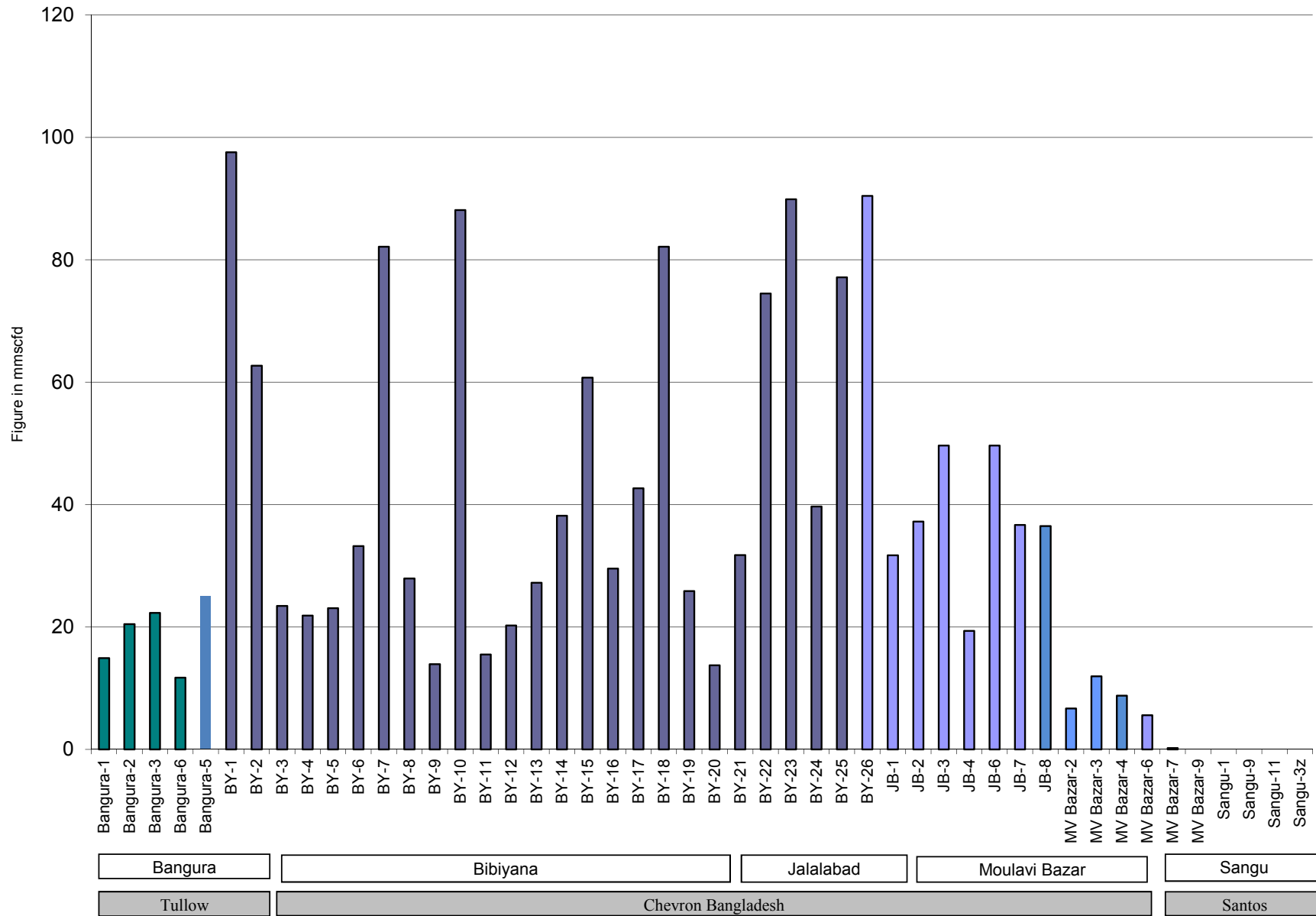


Bangladesh Gas Fields Co. Ltd. (BGFCL)

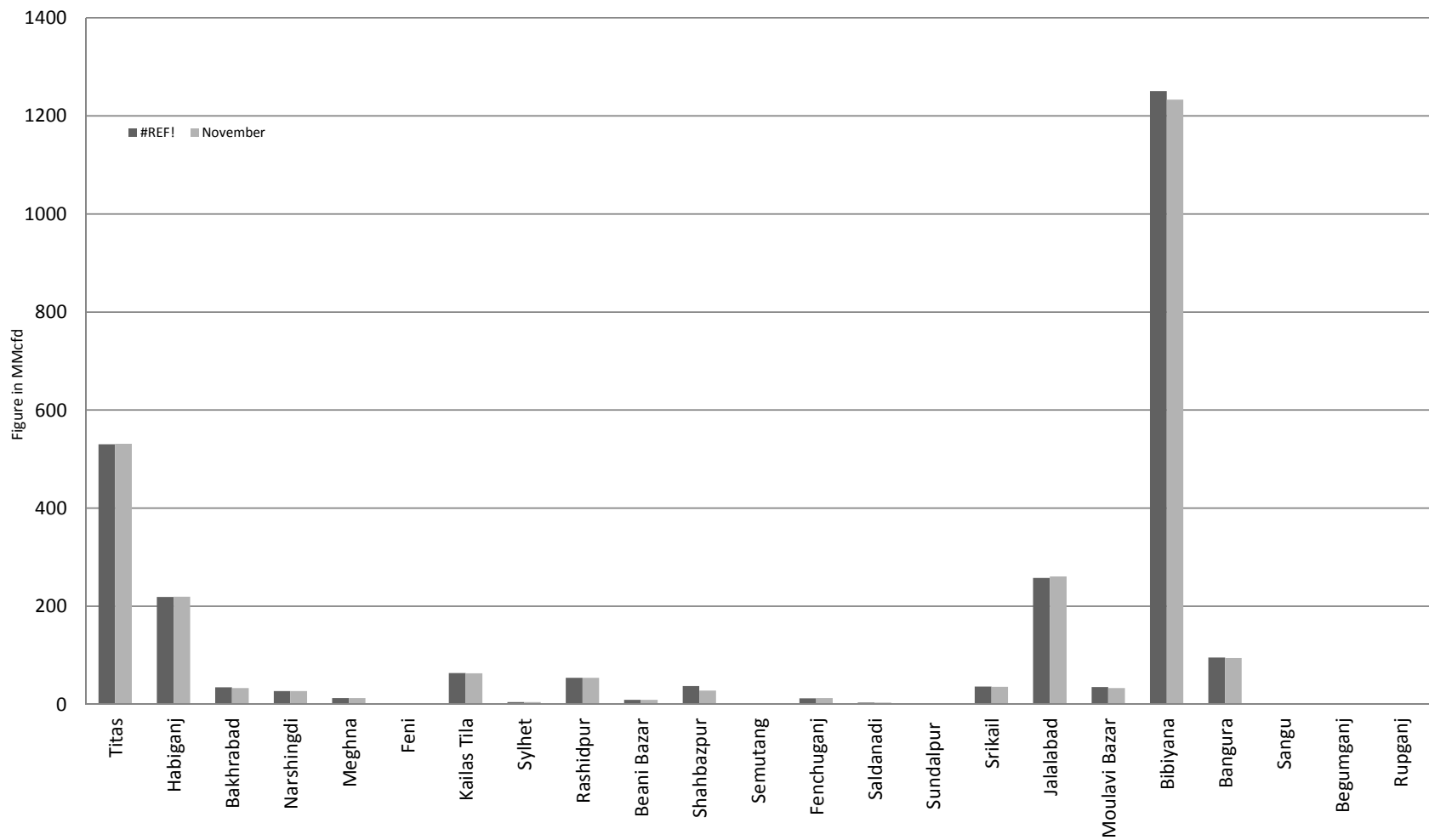
Wellwise Daily Avg. Production- Bapex and SGFL December 2017



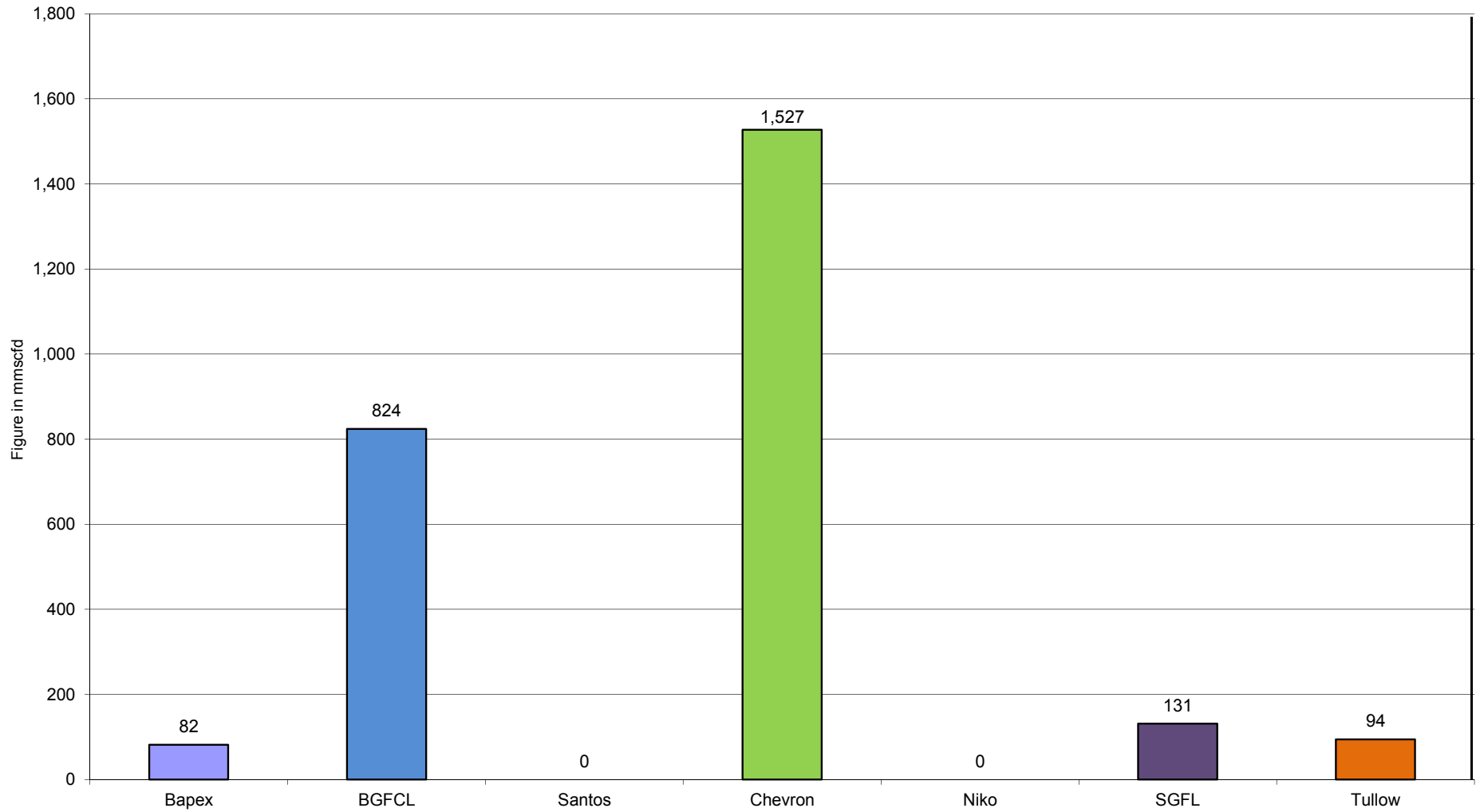
Wellwise Daily Avg. Production- IOC and JVA December 2017



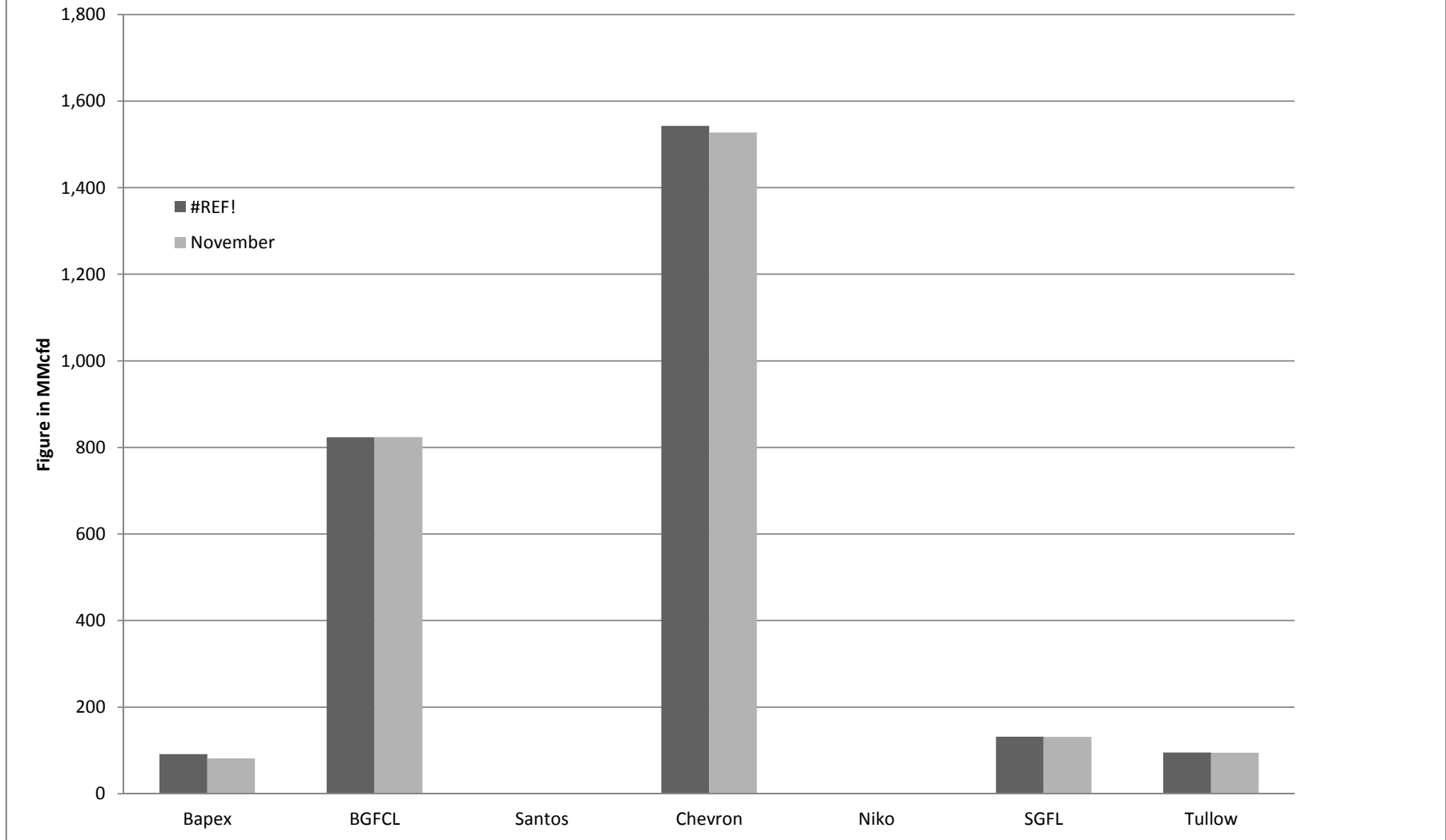
Comparison of fieldwise daily avg. Gas production between November 2017 & December 2017



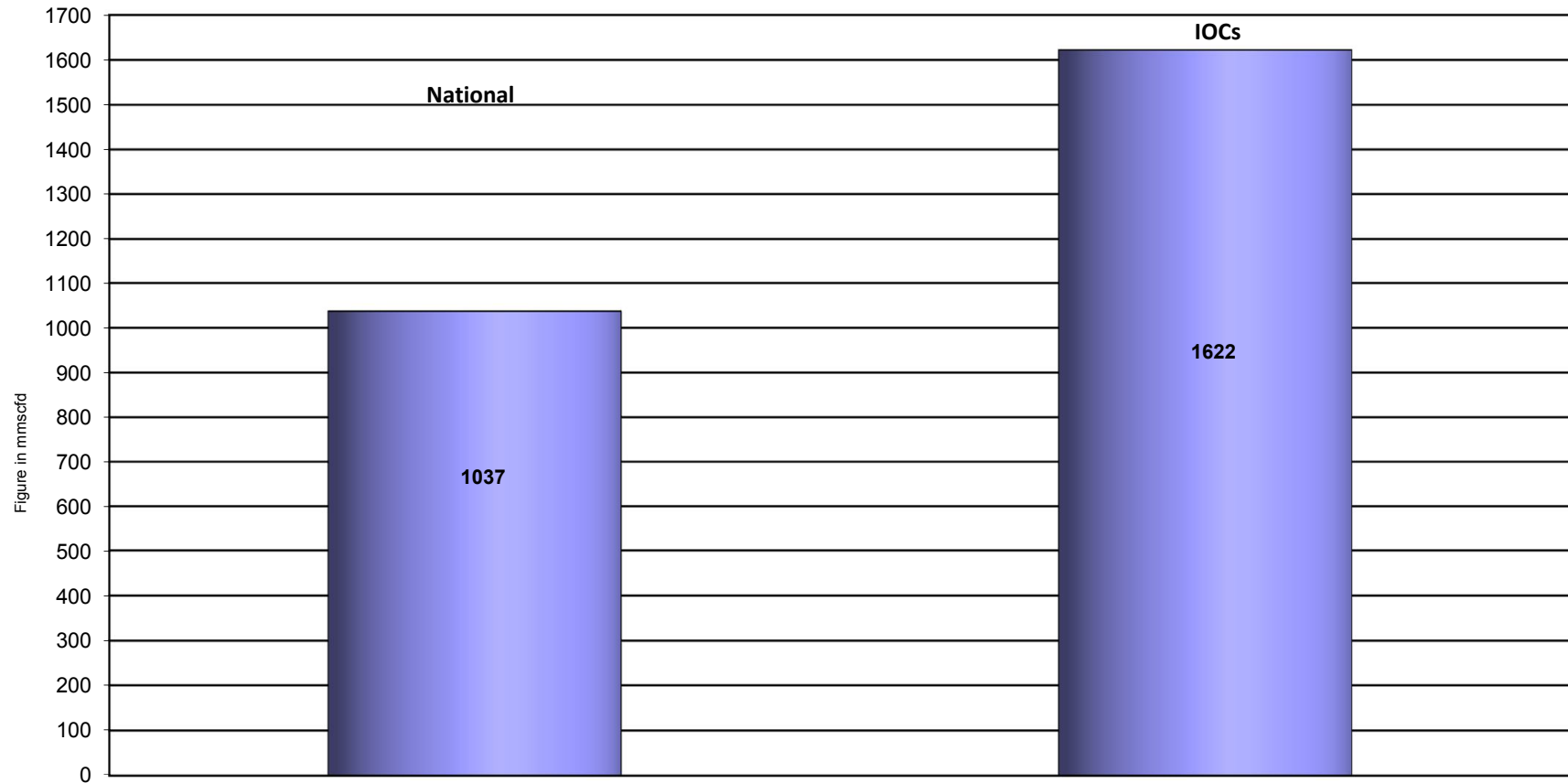
Daily Avg. Production by Operators December 2017



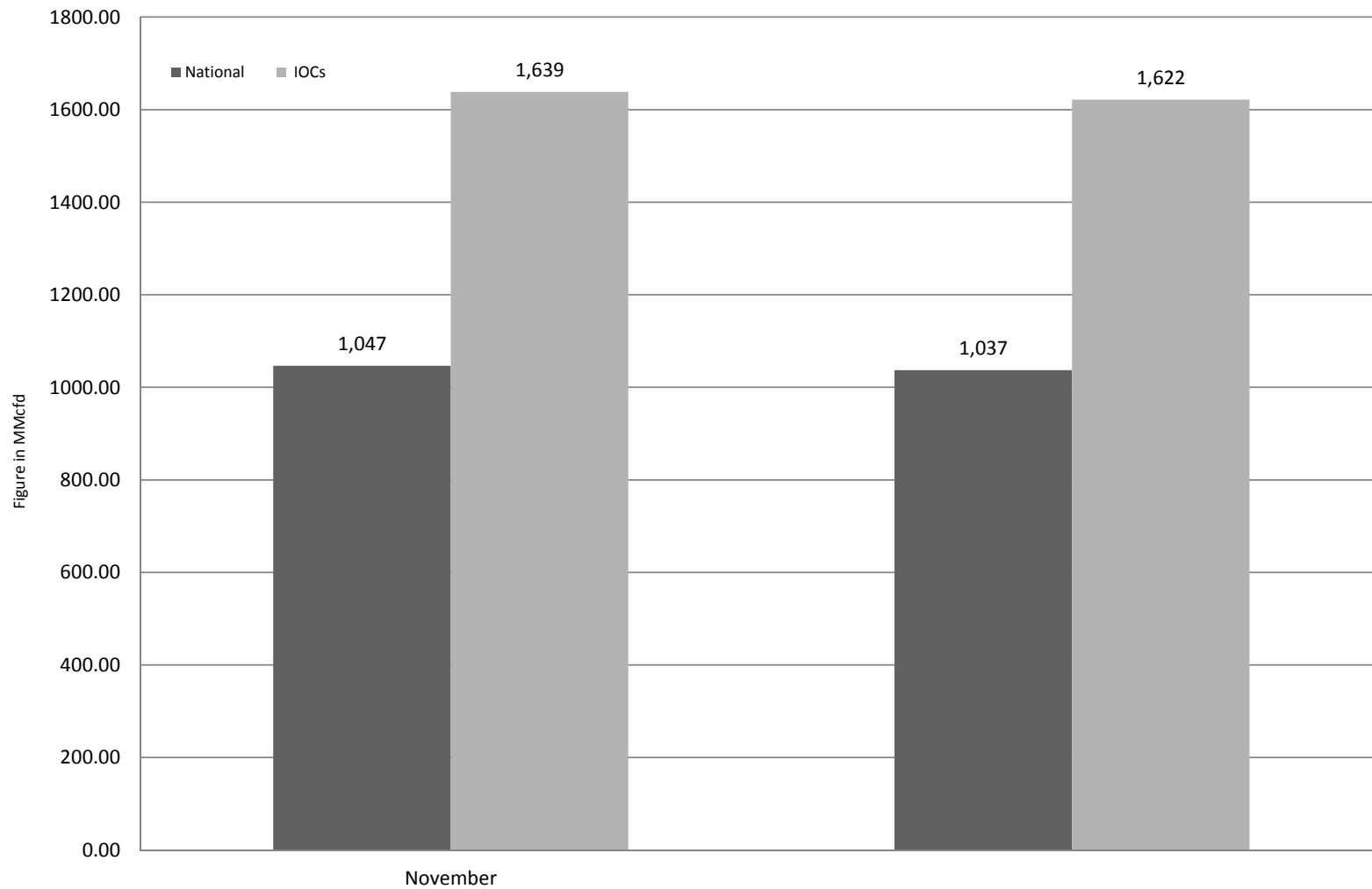
Comparison of operatorwise daily avg. Gas production between November 2017 & December 2017



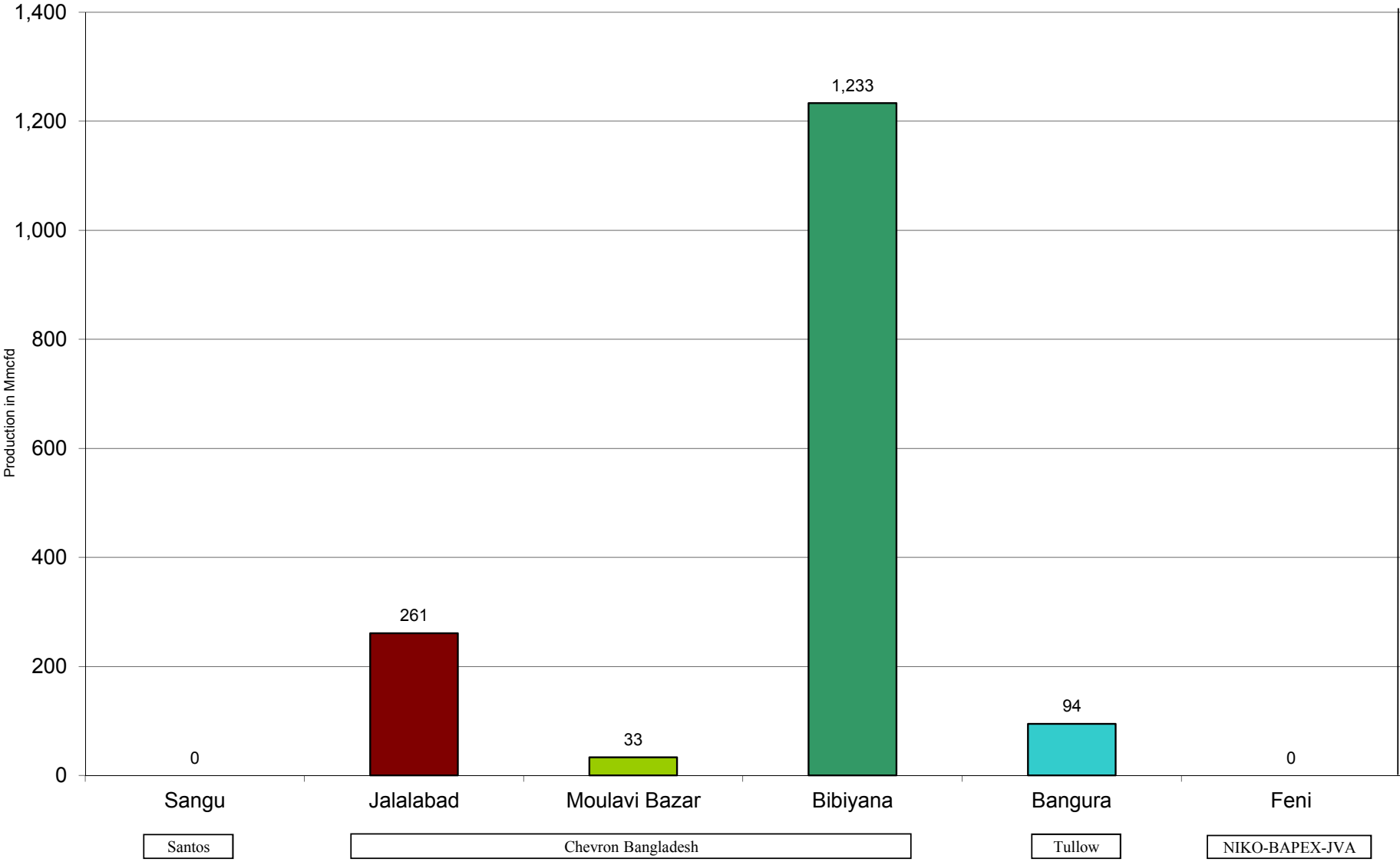
Daily Avg. Production - National Vs. IOCs December 2017



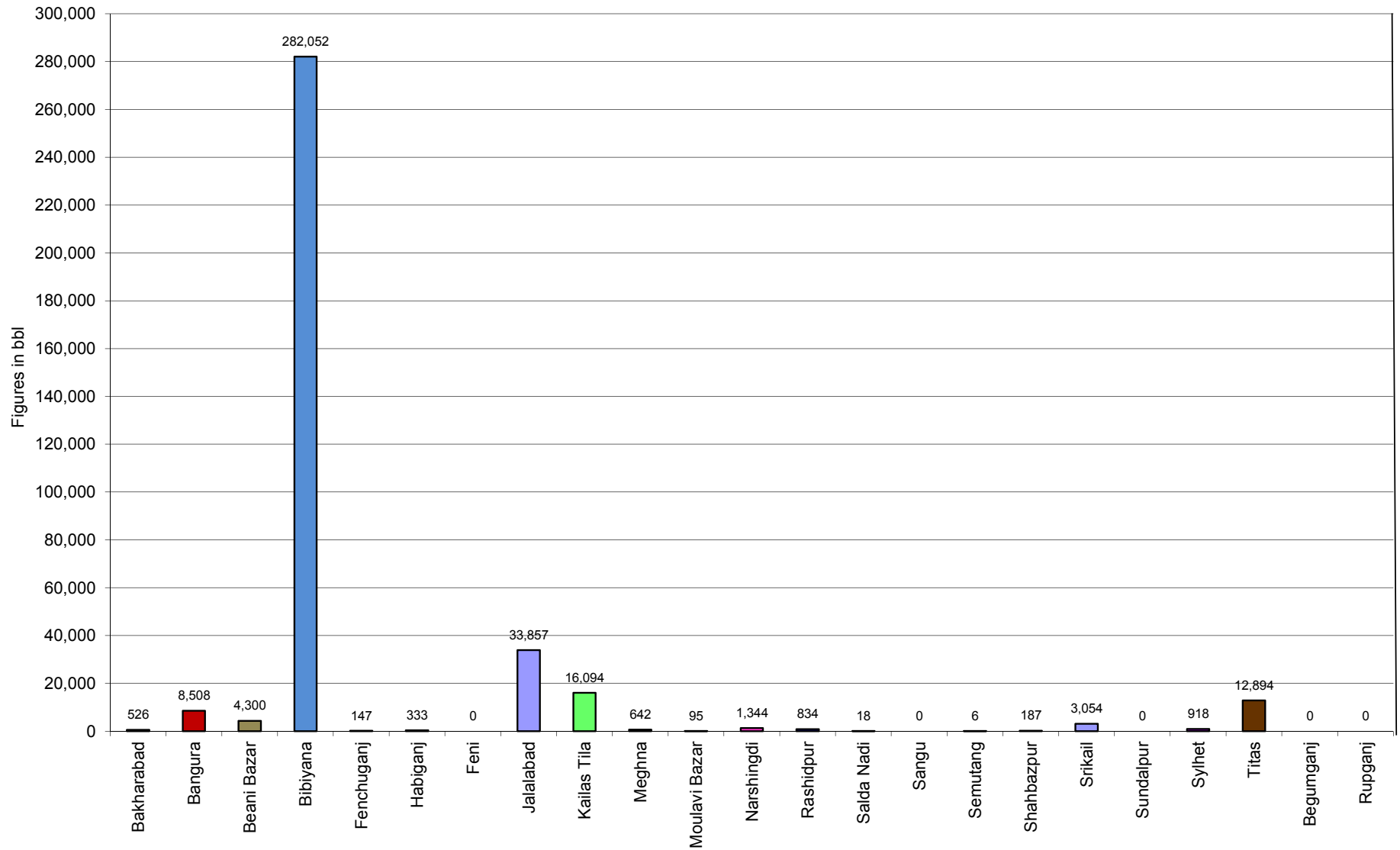
Comparison of daily avg. Gas production - National vs IOC's between November 2017 & December 2017



Daily Avg. Production - IOC and JVA December 2017



Monthly Condensate Production December 2017



Field wise Coal Reserve in Bangladesh

SI No.	Coal Basins	Proved (Mt)	Indicated (Mt)	Inferred (Mt)	Total (Mt)
1	Barapukuria	114.32	211.33	21.06+(43-64)*	346.71+(43-64)*
2	Phulbari	288	226	58	572
3	Khalashpir	-	297.57	225.92	523.49
4	Jamalganj	-	-	1053.9	1053.9
5	Dighipara	-	105	495	600
	Total	402.32	839.9	1896.88-1917.88	3139.10-3160.10

**Resources of VI Seam in second syncline are towards SW of main basin, after Wardell Armstrong*

NOTE: Reserve Figure based on Coal Sector Development Strategy (Final), HCU, PwC

Summary of Reserve and Production of Barapukuria Coal Mine

As of 31 December 2017

Coal Initially Place (Proven + Probable)	346.71 Mt	0.347 Bt
Total Reserve of Seam VI	285.41 Mt	0.285 Bt
Recoverable from Seam VI Central part(Proven + Probable)	16.50 Mt*	0.017 Bt
Coal Production in December 2017	0.11 Mt	0.000 Bt
Cumulative Production as of December 2017	9.71 Mt	0.010 Bt
Remaining Reserve	6.79 Mt	0.007 Bt

NOTE: Reserve figure based on Mines and Minerals Development Report ,HCU PwC

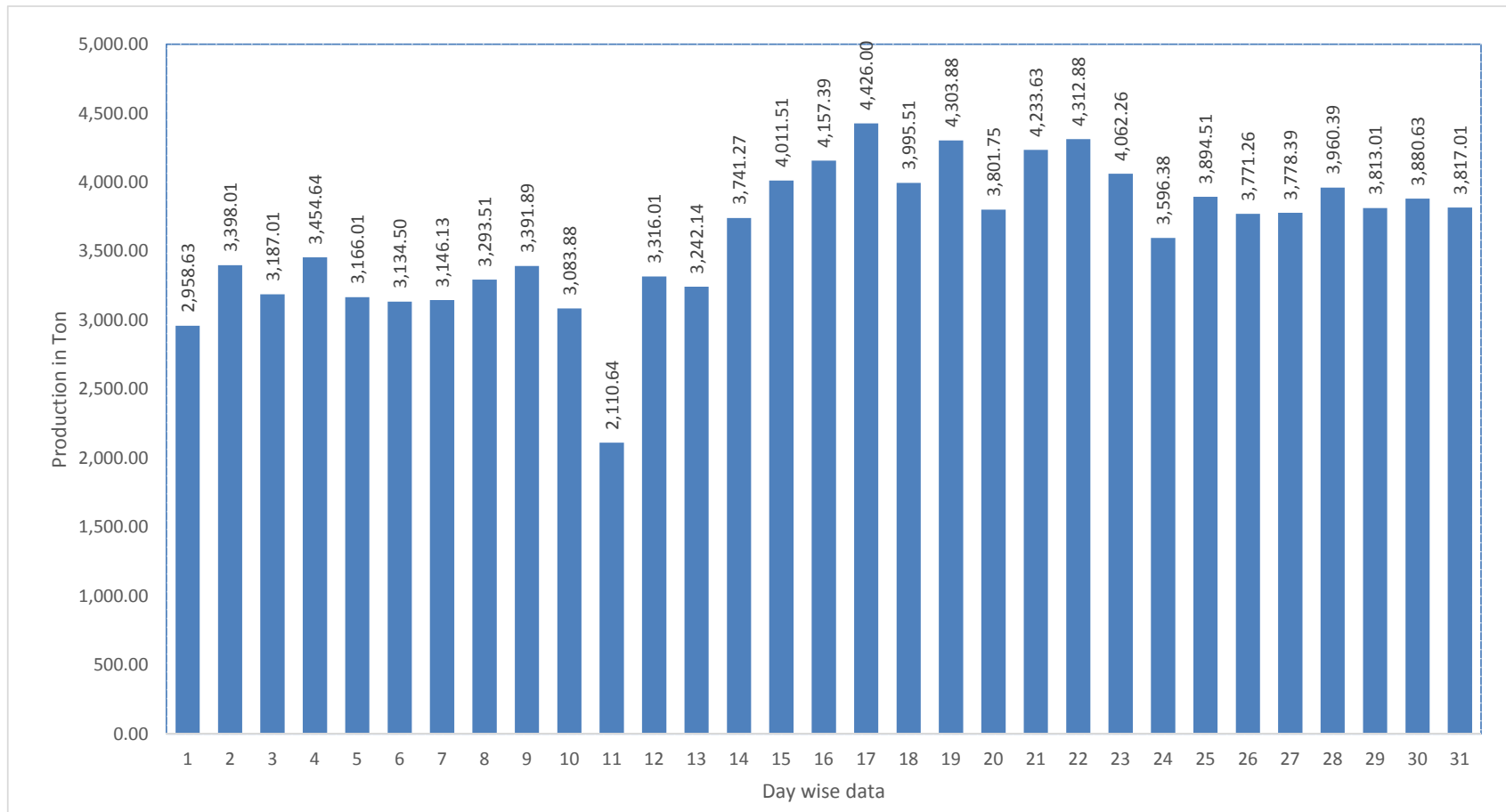
*Figure from BCMCL, M/S Wardell Armstrong. According to Mines and Minerals Development Report ,HCU, PwC this figure is 64.8 Mt

Barapukuria Coal Mine-MPM and P Contract (BCMCL)
Measurement Record: Surface Belt Weigher
Measurement Period: December 2017

Day wise data	Consortium Daily Output (ton)	Consortium Cumulative Total	BCMCL Daily Output	BCMCL Cumulative Total	Remarks
1-Dec-2017	2,958.63	2,958.63	2,958.63	2,958.63	
2-Dec-2017	3,398.01	6,356.64	3,398.01	6,356.64	
3-Dec-2017	3,187.01	9,543.65	3,187.01	9,543.65	
4-Dec-2017	3,454.64	12,998.29	3,454.64	12,998.29	
5-Dec-2017	3,166.01	16,164.30	3,166.01	16,164.30	
6-Dec-2017	3,134.50	19,298.80	3,134.50	19,298.80	
7-Dec-2017	3,146.13	22,444.93	3,146.13	22,444.93	
8-Dec-2017	3,293.51	25,738.44	3,293.51	25,738.44	
9-Dec-2017	3,391.89	29,130.33	3,391.89	29,130.33	
10-Dec-2017	3,083.88	32,214.21	3,083.88	32,214.21	
11-Dec-2017	2,110.64	34,324.85	2,110.64	34,324.85	
12-Dec-2017	3,316.01	37,640.86	3,316.01	37,640.86	
13-Dec-2017	3,242.14	40,883.00	3,242.14	40,883.00	
14-Dec-2017	3,741.27	44,624.27	3,741.27	44,624.27	
15-Dec-2017	4,011.51	48,635.78	4,011.51	48,635.78	
16-Dec-2017	4,157.39	52,793.17	4,157.39	52,793.17	
17-Dec-2017	4,426.00	57,219.17	4,426.00	57,219.17	
18-Dec-2017	3,995.51	61,214.68	3,995.51	61,214.68	
19-Dec-2017	4,303.88	65,518.56	4,303.88	65,518.56	
20-Dec-2017	3,801.75	69,320.31	3,801.75	69,320.31	
21-Dec-2017	4,233.63	73,553.94	4,233.63	73,553.94	
22-Dec-2017	4,312.88	77,866.82	4,312.88	77,866.82	
23-Dec-2017	4,062.26	81,929.08	4,062.26	81,929.08	
24-Dec-2017	3,596.38	85,525.46	3,596.38	85,525.46	
25-Dec-2017	3,894.51	89,419.97	3,894.51	89,419.97	
26-Dec-2017	3,771.26	93,191.23	3,771.26	93,191.23	
27-Dec-2017	3,778.39	96,969.62	3,778.39	96,969.62	
28-Dec-2017	3,960.39	100,930.01	3,960.39	100,930.01	
29-Dec-2017	3,813.01	104,743.02	3,813.01	104,743.02	
30-Dec-2017	3,880.63	108,623.65	3,880.63	108,623.65	
31-Dec-2017	3,817.01	112,440.66	3,817.01	112,440.66	

less Difference in Water Content:	6083.04
Less Out of Seam dilution:	0
Output (tons) measured by Belt	106,357.62
Tonnes mined in DARR	0
Net Output after removing DARR tonnes:	106,357.62

Barapukuria Coal Mine Daywise Data Graph for December 2017



আসুন, যানবাহনসমূহকে অটোগ্যাসে রূপান্তর করি...

জাতীয় সম্পদ প্রাকৃতিক গ্যাস সাশ্রয় করি...

facebook

"Energy misused, cannot be excused"

আমাদের ঘরে যদি এখনো কয়েল স্টার্টার যুক্ত টিউবলাইট থেকে থাকে, আসুন আজই LED টিউবলাইট দ্বারা প্রতিস্থাপন করি।

HYDROCARBON UNIT ON FACEBOOK

“আসুন আমাদের জাতীয় সম্পদ প্রাকৃতিক গ্যাস সাশ্রয় করি”

১। **LPG** ব্যবহার করুন..

অবৈধ গ্যাস সংযোগ থেকে বিরত থাকুন

২। **CNG** নয়, অকটেন দিয়ে গাড়ি চালান...

গাড়ির ইঞ্জিনের আয়ুষ্কাল বাড়ান

চলুন আজই যানবাহনসমূহ AUTO GAS (LPG) এ রূপান্তর করি...

- * CNG এর তুলনায় LPG কনভারশনে ৫০% কম খরচ হয়
- * ৩-৫ মিনিটে ট্যাংকে ফুয়েল ভর্তি হয়, লম্বা লাইনে দাঁড়িয়ে অপেক্ষা করার প্রয়োজন পরে না
- * CNG এর তুলনায় সিলিন্ডারে জায়গা, ওজন ও প্রেশার কম দরকার
- * রক্ষণাবেক্ষণের খরচ কম
- * পেট্রলের তুলনায় AUTO GAS -এ খরচ প্রায় ৫০% কম
- * গ্যাসোলিন ও ডিজেলের তুলনায় নিঃসরণ কম

Hydrocarbon Unit

Energy & Mineral Resources Division
Ministry of Power, Energy & Mineral Resources
153, Pioneer Road
Segunbagicha, Dhaka-1000
www.hcurogbd