



Gas Production & Depletion And Coal Production

March 2019



Gas Reserve & Production at a glance

Gas Initially in Place (GIIP)	:	35,796.19 Bcf
Recoverable (2P)	:	28,685.40 Bcf
Cumulative Production as of March 2019	:	16,696.14 Bcf
Remaining Reserve up to March 2019	:	11,989.26 Bcf
Gas Production in March 2019	:	80.78 Bcf
National Oil Company (NOC's) production in March 2019	:	31.94 Bcf
International Oil Company (IOC's) production in March 2019	:	48.85 Bcf
No. of National Oil Company (NOC's) in March 2019	:	3 (BGFCL, BAPEX, SGFL)
No. of International Oil Company (IOC's) in March 2019	:	2 (Chevron, Tullow)
Total gas fields of National Oil Company(NOC) in March 2019	:	21
Total gas fields of International Oil Company(IOC) in March 2019	:	5
Total gas wells of National Oil Company(NOC) in March 2019	:	116
Total gas wells of International Oil Company(IOC) in March 2019	:	60
No. of National Oil Company (NOC's) gas production well in March 2019	:	66
No. of International Oil Company (IOC's) gas production well in March 2019	:	44
No. of National Oil company(NOC's) suspended well in March 2019	:	50
No. of International Oil company(IOC's) suspended well in March 2019	:	16
Total LNG Import in March 2019	:	15.78 Bcf
Cumulative LNG Import from August 2018	:	68.13 Bcf

Executive Summary of March 2019

Total gas and condensate Production in March 2019 were 80.78 Bcf and 353,092.88 Bbl. In the previous month i.e. February 2019, gas and condensate production was 72.98 Bcf and 320,372 Bbl and in the same month of the previous year i.e. March 2018, total gas and condensate production was 83.07 Bcf and 364739.18 Bbl respectively. The National Oil Companies (NOC's) and International Oil Companies (IOC's) Produced 31.94 Bcf and 48.85 Bcf gas respectively in March 2019. During the previous month i.e. February 2019 gas production by the National Oil Companies (NOC's) and International Oil Companies (IOC's) were 29.01 Bcf and 48.85 Bcf respectively. In the month of March 2019 Bibiyana gas field Produced 39.15 Bcf gas and it ranked top among the gas producers. It is noted that Bibiyana gas field Produced 35.12 Bcf in February 2019. Average production from the field during the month of March 2019 was 1133 Mmcfd.

During the month of March 2019 total production of condensate was 353,092.88 Bbl compared to 320,372 Bbl in the previous month i.e. February 2019. Bibiyana gas field Produced 275824.96 Bbl condensate and ranked top while Jalalabad ranked 2nd by producing 25898.36 Bbl.

The month of March 2019 total coal production was 97,233.48 Ton. In the previous month i.e. February 2019 total coal production was 1,455.51 Ton. It indicates that 95,777.97 Ton more Coal was produced compared to previous month.

Total LNG import in March 2019 was 15.78 Bcf. As a result, cumulative LNG import stands on 68.13 Bcf from August 2018.

Table of Contents

Gas Report	Page No.
Summary	1
summary of Reserve and Production	2
Production comparison between February 2019 & March 2019	3
Probable Yearwise Production of GAS	4
Probable Year wise Remaining GAS	5
Production per well & production reserve ratio	6
Monthly Production by Fields & Wells up to March 2019	7-14
Monthly Condensate Production by Fields up to March 2019	15-16
Monthly Water Production by Fields from March 2019	17-18
Conditions of Field and Well up to March 2019	19-23
Chart	
Well-wise Production of All fields in 2017-18	24
Reserve, Production and Remaining Reserve as of March 2019	25
Daily Average Gas Production from January 2012 to March 2019	26
Field wise Daily Average Production as of March 2019	27
Well wise Daily Average Production-BGFCL as of March 2019	28
Well wise Daily Average Production-BAPEX and SGFL, March 2019	29
Well wise Daily Average Production-IOC and JVA, March 2019	30
Comparison of Field wise Daily Avg Gas Production between Feb 19 & March 19	31
Daily Average Production by Operator, March 2019	32
Comparison of Operator wise daily avg Production between February 19 & March 19	33
Daily Average Production – National vs IOC’s, March 2019	34
Comparison of daily avg Gas Production- National vs IOC’s between February 19 & March 19	35
Daily Average Production IOC’s and JVA, March 2019	36
Monthly Condensate Production, March 2019	37
Coal Report	
Summary	38-39
Barapukuria Coal Mine-MPM and P Contract (BCMCL)	40
Barapukuria Coal Mine Day wise Data Graph for March 2019	41

Summary of Reserve, Production & Import As of 31 March 2019

Gas Initially Place (Proven + Probable)	35,796.19 Bcf	35.80 Tcf
Recoverable (Proven + Probable)	28,685.40 Bcf	28.69 Tcf
Gas Production in March 2019	80.78 Bcf	0.08 Tcf
Cumulative Gas Production as of March 2019	16,696.14 Bcf	16.70 Tcf
Remaining Reserve	11,989.26 Bcf	11.99 Tcf

NOTE: Reserve figure based on "Updated Report on Bangladesh Gas Reserve Estimation 2010", prepared by Gustavson Associates LLC, USA

Total LNG Import in March 2019	15.78 Bcf	0.02 Tcf
Cumulative LNG Import from August 2018	68.13 Bcf	0.07 Tcf

Summary of Reserve and Production

(As of March 2019)

Gas Bcf



Sl No.	Field	2P	GIIP	2P Reserve	Gas Prod. In March '19	Cum. Gas Production	Remaining Reserve	Cum. Condensate Production
1	Begumganj		47.0	33.0	0.2	2.0	31.0	1
2	Shahbazpur		415.0	261.0	1.7	62.3	198.7	7
3	Semutang		654.0	318.0	0.0	13.1	304.9	5
4	Fenchuganj		483.0	329.0	0.3	158.9	170.1	115
5	Salda Nadi		393.0	275.0	0.1	91.5	183.5	58
6	Srikail*		230.0	161.0	1.1	84.4	76.6	138
7	Sundalpur *		62.2	50.2	0.2	12.6	37.6	0
8	Rupganj		48.0	33.6	0.0	0.7	32.9	1
Bapex			2,332.2	1,460.8	3.7	425.5	1,035.3	325
9	Meghna		122.0	101.0	0.3	70.0	31.0	109
10	Narshingdi		405.0	345.0	0.8	202.4	142.6	421
11	Kamta		72.0	50.0	0.0	21.1	28.9	4
12	Habiganj		3,981.0	2,787.0	6.4	2,447.9	339.1	132
13	Bakhrabad		1,825.0	1,387.0	0.9	814.7	572.3	1,021
14	Titas		9,039.0	7,582.0	15.5	4,697.0	2,885.0	5,261
BGFCL			15,444.0	12,252.0	24.0	8,253.1	3,998.9	6,949
15	Sangu		976.0	771.0	0.0	489.5	281.5	37
Santos/Cairn			976.0	771.0	0.0	489.5	281.5	37
16	Bibiyana		5,321.0	4,532.0	39.2	3,708.1	823.9	21,964
17	Moulavi Bazar		630.0	494.0	0.4	323.9	170.1	117
18	Jalalabad**		1,346.0	1,346.0	6.8	1,297.9	48.1	10,219
Chevron			7,297.0	6,372.0	46.3	5,329.9	1,042.1	32,300
19	Feni		185.0	130.0	0.0	63.0	67.0	110
Niko			185.0	129.6		63.0	66.6	110
20	Kailas Tila		3,463.0	2,880.0	2.0	732.5	2,147.5	7,846
21	Sylhet		580.0	408.0	0.1	214.7	193.3	798
22	Rashidpur		3,887.0	3,134.0	1.6	632.2	2,501.8	779
23	Chattak		677.0	474.0	0.0	25.8	448.2	4
24	Beani Bazar		225.0	137.0	0.3	96.0	41.0	1,580
SGFL			8,832.0	7,033.0	3.9	1,701.2	5,331.8	11,007
25	Bangura		730.0	621.0	2.9	433.9	187.1	1,092
Tullow			730.0	621.0	2.9	433.9	187.1	1,092
26	Kutubdia		65.0	46.0	0.0	0.0	46.0	0
Total			35,796.2	28,685.4	80.78	16,696.1	11,989.3	51,821

* Preliminary reserve estimated by BAPEX

** 2P reserve estimation by Petrobangla has crossed the limit. So 2P reserve is estimated as GIIP reserve now.

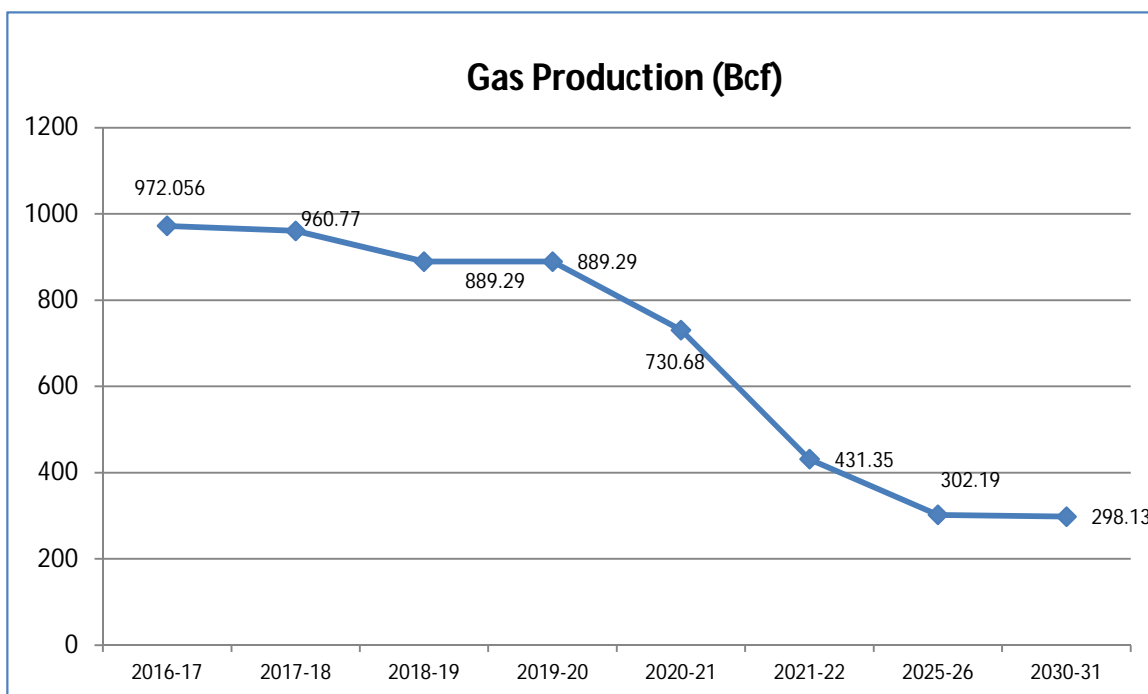
Production comparison between February'19 & March'19



SI No.	Field	Gas Prod. (MMcf) in February'19	Daily Avg. (MMcfd) in February'19	Gas Prod. (MMcf) in March'19	Daily Avg. (MMcfd) in March'19
1	Begumganj	179	6	200	6
2	Shahbazpur	1411	50	1709	55
3	Semutang	23	1	27	1
4	Fenchuganj	234	8	255	8
5	Salda Nadi	124	4	140	5
6	Srikail	1005	36	1102	36
7	Sundalpur	200	7	220	7
8	Rupganj	0	0	0	0
Bapex		3175	113	3653	118
9	Meghna	308	11	314	10
10	Narshingdi	757	27	843	27
11	Kamta	0	0	0	0
12	Habiganj	5985	214	6400	206
13	Bakhrabad	807	29	898	29
14	Titas	13893	496	15509	500
BGFCL		21751	777	23965	773
15	Sangu	0	0	0	0
Santos/Cairn		0	0	0	0
16	Bibiyana	35117	1254	39154	1263
17	Moulavi Bazar	511	18	396	13
18	Jalalabad	6158	220	6760	218
Chevron		41787	1492	46310	1494
19	Feni	0	0	0	0
Niko		0	0	0	0
20	Kailas Tila	1787	64	1971	64
21	Sylhet	108	4	118	4
22	Rashidpur	1439	51	1569	51
23	Chattak	0	0	0	0
24	Beani Bazar	239	9	266	9
SGFL		3573	128	3924	127
25	Bangura	2690	96	2931	95
Tullow		2690	96	2931	95
26	Kutubdia	0	0	0	0
Total		72975	2606	80782	2606

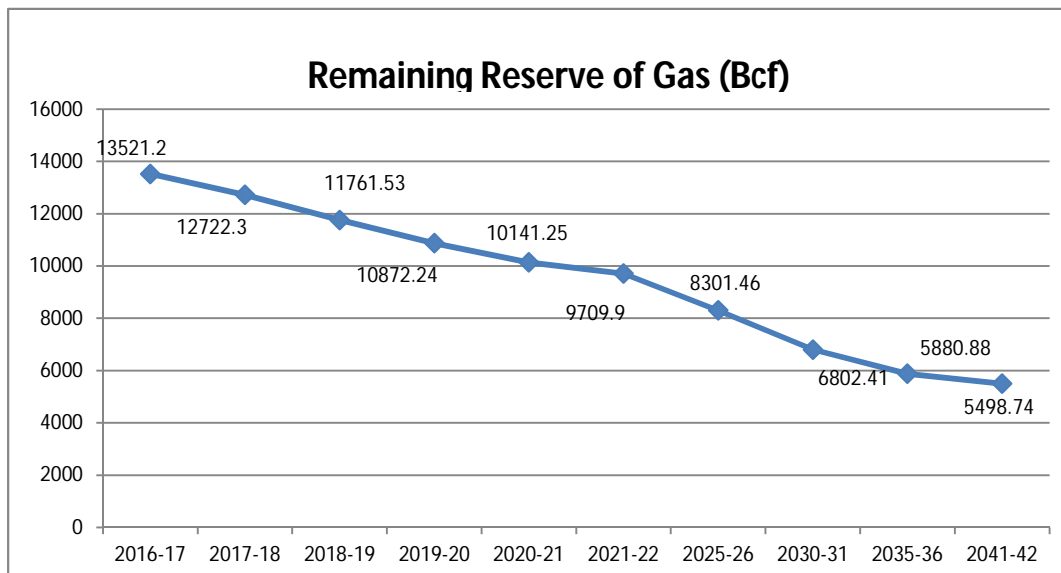
Probable Yearwise Production of GAS

	Total 2P Reserve	Cumulative Production	production									
			2016-17	2017-18	2018-19	2019-20	2020-21	2021-22	2025-26	2030-31	2035-36	2041-42
Titas	7582	4556.6	191.13	195.42	195.42	195.42	195.42	195.42	195.42	195.42	0	0
Habiganj	2787	2386.8	81.17	79.9	79.9	79.9	79.9	79.9				
kamta	50	21.1	0	0		0	0	0	0	0	0	0
Bakhrabad	1387	806.9	14.26	12.02	12.02	12.02	12.02	12.02	12.02	12.02	12.02	12.02
Narshingdi	345	195	10.32	10.02	10.02	10.02	10.02	10.02	10.02	10.02		
Meghna	101	66.7	4.43	4.62	4.62	4.62	4.62	4.62	1.96			
Feni	130	63	0	0	0	0	0	0	0	0	0	0
Kailas Tila	2880	715	23.72	22.96	22.96	22.96	22.96	22.96	22.96	22.96	22.96	22.96
Sylhet	408	213.5	2.8	1.79	1.79	1.79	1.79	1.79	1.79	1.79	1.79	1.79
Rashidpur	3134	618.1	20.61	19.51	19.51	19.51	19.51	19.51	19.51	19.51	19.51	19.51
Chattak	474	25.8	0	0	0							
Beani Bazar	137	93.6	4.19	3.5	3.5	3.5	3.5	3.5	3.5	1.4		
Shahbazpur	261	47.5	9.78	15.26	15.26	15.26	15.26	15.26	15.26	15.26		
Semutang	318	12.9	0.78	0.46	0.46	0.46	0.46	0.46	0.46	0.46	0.46	0.46
Fenchuganj	329	156.1	8.77	4.7	4.7	4.7	4.7	4.7	4.7	4.7	4.7	4.7
Saldanadi	275	90.3	1.89	1.06	1.06	1.06	1.06	1.06	1.06	1.06	1.06	1.06
Sundalpur	50.2	10.7	0	0.94	0.94	0.94	0.94	0.94	0.94	0.94	0.94	0.94
Srikail	161	75.1	14.99	12.93	12.93	12.93	12.93	12.93	0			
Jalalabad	1346	1233.3	96.81	92.09	20.61	20.61						
Moulavi Baz	494	317.3	13.71	12.34	12.34	12.34	12.34	12.34	12.34	12.34		
Bibiyana	4532	3357.7	437.17	437.33	437.33	437.33	299.33					
Bangura	621	409.4	35.09	33.67	33.67	33.67	33.67	33.67				
Sangu	771	489.5	0	0	0	0	0	0				
Begumganj	33	0.9	0.006	0	0	0	0	0				
Rupganj	33.6	0.7	0.43	0.25	0.25	0.25	0.25	0.25	0.25	0.25	0.25	0.25
Kutubdia	46	0	0	0	0							
	28685.8	15963.5	972.056	960.77	889.29	889.29	730.68	431.35	302.19	298.13	63.69	63.69



Probable Year wise Remaining GAS

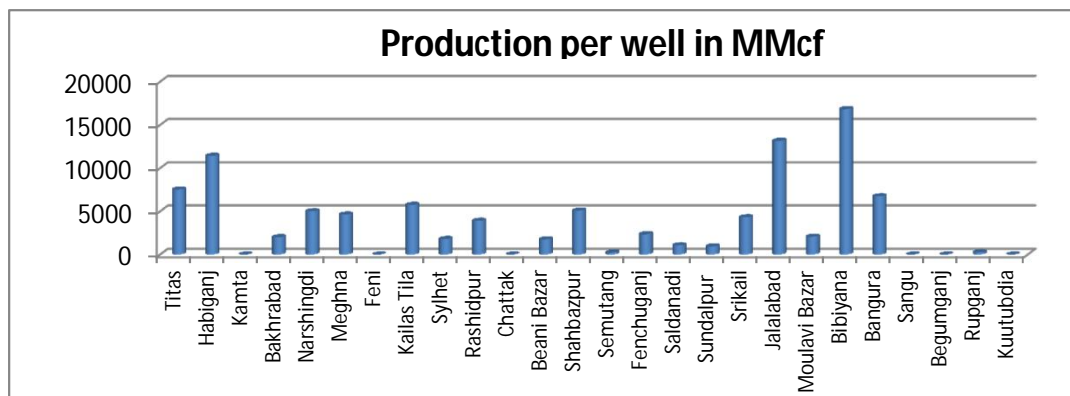
	Total 2p Reserve	Cumulative production	Remaining									
			2016-17	2017-18	2018-19	2019-20	2020-21	2021-22	2025-26	2030-31	2035-36	2041-42
Titas	7582	4556.6	3220.8	3025.4	2829.98	2634.56	2439.14	2243.72	1462.04	484.94	0	0
Habiganj	2787	2386.8	480.1	400.2	320.3	240.4	160.5	80.6			0	0
kamta	50	21.1	28.9	28.9	28.9	28.9	28.9	28.9	28.9	28.9	28.9	28.9
Bakhrabad	1387	806.9	592.1	580.1	568.08	556.06	544.04	532.02	483.94	423.84	363.74	291.62
Narshingdi	345	195	160	150	139.98	129.96	119.94	109.92	69.84	19.74	0	0
Meghna	101	66.7	38.9	34.3	29.68	25.06	20.44	15.82	0	0	0	0
Feni	130	63	67	67	67	67	67	67	67	67	0	0
Kailas Tila	2880	715	2188	2165	2142.04	2119.08	2096.12	2073.16	1981.32	1866.52	1751.72	1613.96
Sylhet	408	213.5	196.3	194.5	192.71	190.92	189.13	187.34	180.18	171.23	162.28	151.54
Rashidpur	3134	618.1	2535.4	2515.9	2496.39	2476.88	2457.37	2437.86	2359.82	2262.27	2164.72	2047.66
Chattak	474	25.8	448.2	448.2	448.2	448.2	448.2	448.2	448.2	448.2	448.2	448.2
Beani Bazar	137	93.6	46.9	43.4	39.9	36.4	32.9	29.4	15.4	0	0	0
Shahbazpur	261	47.5	228.8	213.5	198.24	182.98	167.72	152.46	91.42	15.12	0	0
Semutang	318	12.9	305.6	305.1	304.64	304.18	303.72	303.26	301.42	299.12	296.82	294.06
Fenchuganj	329	156.1	177.6	172.9	168.2	163.5	158.8	154.1	135.3	111.8	88.3	60.1
Saldanadi	275	90.3	185.7	184.7	183.64	182.58	181.52	180.46	176.22	170.92	165.62	159.26
Sundalpur	50.2	10.7	40.4	39.5	38.56	37.62	36.68	35.74	31.98	27.28	22.58	16.94
Srikail	161	75.1	98.9	85.9	72.97	60.04	47.11	34.18	0	0	0	0
Jalalabad	1346	1233.3	42.8	112.7	20.61	0	0	0	0	0		0
Moulavi Baz	494	317.3	189.1	176.7	164.36	152.02	139.68	127.34	77.98	16.28	0	0
Bibiyana	4532	3357.7	1611.7	1174.3	736.97	299.64	0		0	0	0	0
Bangura	621	409.4	245.2	211.6	177.93	144.26	110.59	76.92	0	0	0	0
Sangu	771	489.5	281.5	281.5	281.5	281.5	281.5	281.5	281.5	281.5	281.5	281.5
Begumganj	33	0.9	32.1	32.1	32.1	32.1	32.1	32.1	32.1	32.1	32.1	32.1
Rupganj	33.6	0.7	33.2	32.9	32.65	32.4	32.15	31.9	30.9	29.65	28.4	26.9
Kutubdia	46	0	46	46	46	46	46	46	46	46	46	46
Total	28685.8	15963.5	13521.2	12722.3	11761.5	10872.2	10141.3	9709.9	8301.46	6802.41	5880.88	5498.74



Production per well & production reserve ratio



	No of well	Total 2p- Recoverable	2017-18 production	production per well mmcf	production reserve ratio
Titas	26	7582	195.42	7516.15	0.026
Habiganj	7	2787	79.9	11414.29	0.029
Kamta	0	50	0	0.00	0.000
Bakhrabad	6	1387	12.02	2003.33	0.009
Narshingdi	2	345	10.02	5010.00	0.029
Meghna	1	101	4.62	4620.00	0.046
Feni	0	130	0	0.00	0.000
Kailas Tila	4	2880	22.96	5740.00	0.008
Sylhet	1	408	1.79	1790.00	0.004
Rashidpur	5	3134	19.51	3902.00	0.006
Chattak	0	474	0	0.00	0.000
Beani Bazar	2	137	3.5	1750.00	0.026
Shahbazpur	3	261	15.26	5086.67	0.058
Semutang	2	318	0.46	230.00	0.001
Fenchuganj	2	329	4.7	2350.00	0.014
Saldanadi	1	275	1.06	1060.00	0.004
Sundalpur	1	50.2	0.94	940.00	0.019
Srikail	3	161	12.93	4310.00	0.080
Jalalabad	7	1346	92.09	13155.71	0.068
Moulavi Bazar	6	494	12.34	2056.67	0.025
Bibiyana	26	4532	437.33	16820.38	0.096
Bangura	5	621	33.67	6734.00	0.054
Sangu	0	771	0	0.00	0.000
Begumganj	0	33	0	0.00	0.000
Rupganj	1	33.6	0.25	250.00	0.007
Kuutubdia	0	46	0	0.00	0.000
Total	111	28685.8	960.77	8655.59	0.033



Monthly Production by Field and Well upto March- 2019



HYDROCARBON UNIT

Energy & Mineral Resources Division

Figures in mmscf

Well	Jan	Feb	Mar	Apr	May	Jun	Jul	Aug	Sep	Oct	Nov	Dec	Total	Cumulative	2018	2017	2016	
Field : Bakharabad																		
BKB-1	0	0	0										0	141,167	0	0	0	#
BKB-2	34	32	37										103	86,674	445	543	731	#
BKB-3	154	151	154										460	161,305	1,989	2,249	2,223	#
BKB-4	0	0	0										0	55,872				#
BKB-5	155	140	154										450	59,261	1,822	1,847	1,814	#
BKB-6	0	0	0										0	50,069	0			#
BKB-7	0	0	0										0	107,750	0	0	0	#
BKB-8	158	170	214										543	126,804	2,017	3,462	4,142	#
BKB-9	251	229	248										729	21,851	3,332	3,637	4,160	#
BKB-10	98	84	91										273	3,947	1,297	1,453	924	#
Field Total:	852	807	898	0	0	0	0	0	0	0	0	0	2,557	814,698	10,903	13,190	13,070	#
Daily Avg.(mmscfd)	27	29	29	0	0	0	0	0	0	0	0	0	28		30	36	36	
Field : Bangura																		
Bangura-1	384	343	377										1,105	90,359	4,615	4,914	4,886	#
Bangura-2	504	437	472										1,413	80,951	6,802	7,837	9,200	#
Bangura-3	601	516	563										1,680	98,407	7,265	8,662	10,038	#
Bangura-6	343	306	319										968	9,915	4,847	4,100		#
Bangura-5	1,212	1,087	1,200										3,499	154,241	8,410	9,699	11,514	#
Field Total:	3,044	2,690	2,931	0	0	0	0	0	0	0	0	0	8,665	433,873	31,940	35,212	35,639	#
Daily Avg.(mmscfd)	98	96	95	0	0	0	0	0	0	0	0	0	96		88	96	98	
Field : Beani Bazar																		
BB-1	0	0	0										0	35,481	0	1,023	33	#
BB-2	274	239	266										779	60,516	3,276	3,282	3,431	#
Field Total:	274	239	266	0	0	0	0	0	0	0	0	0	779	95,996	3,276	4,306	3,464	#
Daily Avg.(mmscfd)	9	9	9	0	0	0	0	0	0	0	0	0	9		9	12	9	
Field : Bibiyana																		
BY-1	2,554	2,149	2,272										6,974	374,859	21,743	35,595	35,050	#
BY-2	1,632	1,327	1,573										4,533	278,959	21,388	23,957	20	#
BY-3	737	608	567										1,911	237,180	6,249	9,904	16,873	#
BY-4	1,865	1,587	1,790										5,242	185,780	28,559	6,571	7,322	#
BY-5	762	698	718										2,179	174,146	6,131	8,117	9,229	#
BY-6	792	617	771										2,179	223,675	11,057	11,879	15,208	#
BY-7	2,548	2,171	2,391										7,110	251,693	23,155	32,874	33,040	#
BY-8	768	713	753										2,234	136,477	8,921	12,486	2,987	#
BY-9	553	482	359										1,394	126,011	4,093	6,247	6,820	#

Monthly Production by Field and Well upto March- 2019



HYDROCARBON UNIT

Energy & Mineral Resources Division

Figures in mmscf

Well	Jan	Feb	Mar	Apr	May	Jun	Jul	Aug	Sep	Oct	Nov	Dec	Total	Cumulative	2018	2017	2016	
BY-10	2,106	1,752	2,357										6,215	341,212	30,954	32,967	33,582	#
BY-11	797	626	657										2,079	122,040	12,147	6,813	9,357	#
BY-12	2,162	2,177	2,205										6,544	129,248	6,835	8,284	10,574	#
BY-13	959	569	880										2,408	75,367	13,171	11,842	15,603	#
BY-14	800	730	845										2,374	92,988	11,523	15,354	15,170	#
BY-15	1,829	1,420	1,646										4,895	101,815	24,295	19,111	17,698	#
BY-16	908	823	806										2,537	63,609	9,264	12,541	15,844	#
BY-17	1,794	1,176	1,440										4,410	82,282	17,603	15,412	15,463	#
BY-18	2,784	2,387	2,668										7,839	125,641	31,890	29,509	33,072	#
BY-19	1,761	2,275	2,368										6,403	38,481	8,144	9,859	9,383	#
BY-20	1,636	2,008	2,113										5,757	43,602	7,840	6,533	9,282	#
BY-21	634	531	656										1,821	37,045	9,670	13,246	8,533	#
BY-22	1,742	1,310	1,480										4,532	112,331	24,755	27,093	33,387	#
BY-23	2,261	1,781	2,212										6,255	58,302	32,043	15,333	4,405	#
BY-24	870	712	824										2,406	60,570	13,268	13,484	15,265	#
BY-25	2,070	2,145	2,340										6,555	111,735	28,306	30,331	33,282	#
BY-26	2,683	2,344	2,465										7,492	123,057	33,853	30,446	33,167	#
Field Total:	40006	35117	39154	0	0	0	0	0	0	0	0	0	114,278	3,708,106	446,855	445,787	439,615	#
Daily Avg.(mmscfd)	1291	1254	1263	0	0	0	0	0	0	0	0	0	1,270		1,224	1,221	1,204	
Field :	Chattak																	
Ch-1	Production Suspended													25,834		#		
Field Total:	0			0			0			0			25,834		#			
Daily Avg.(mmscfd)	0			0			0			0			0					
Field :	Fenchuganj																	
Fenchuganj-2	0	0	0										0	38,169	0	0	0	#
Fenchuganj-3	274	203	225										702	91,340	3,186	6,192	7,606	#
Fenchuganj-4	60	30	30										120	29,394	809	441	3,189	#
Field Total:	334	234	255	0	0	0	0	0	0	0	0	0	822	158,902	3,994	6,633	10,795	#
Daily Avg.(mmscfd)	11	8	8	0	0	0	0	0	0	0	0	0	9		11	18	30	
Field :	Feni																	
Feni-1	Production Suspended								0	0			34,214		#			
Feni-2	Production Suspended								0	0			6,119		#			
Feni-3	Production Suspended								0	0			2,176		#			

Monthly Production by Field and Well upto March- 2019



HYDROCARBON UNIT

Energy & Mineral Resources Division

Figures in mmscf

Well	Jan	Feb	Mar	Apr	May	Jun	Jul	Aug	Sep	Oct	Nov	Dec	Total	Cumulative	2018	2017	2016		
Feni-4	Production Suspended								0					14,386					#
Feni-5	Production Suspended								0					6,127					#
Field Total:													63,023				#		
Daily Avg.(mmscfd)																			
Field : Habiganj																			
Hbj-1	429	375	414										1,217	279,325	2,207	0	0	#	
Hbj-2	0	0	0										0	275,704	0	0	0	#	
Hbj-3	1,105	952	986										3,044	380,201	13,155	13,151	13,227	#	
Hbj-4	1,105	952	986										3,044	374,659	13,155	13,151	13,227	#	
Hbj-5	798	711	776										2,285	299,959	9,497	9,497	9,552	#	
Hbj-6	461	413	459										1,334	163,543	5,487	5,491	5,523	#	
Hbj-7	1,211	1,090	1,233										3,534	256,653	14,533	14,565	14,685	#	
Hbj-8	0	0	0										0	11,023	0	0	0	#	
Hbj-9	0	0	0										0	52,652	0	0	0	#	
Hbj-10	969	870	925.3										2,764	255,896	13,928	14,058	14,629	#	
Hbj-11	697	623	619.27										1,940	98,247	9,579	10,398	11,247	#	
Field Total:	6,776	5,985	6,400	0	0	0	0	0	0	0	0	0	19,161	2,447,862	81,540	80,313	82,091	#	
Daily Avg.(mmscfd)	219	214	206	0	0	0	0	0	0	0	0	0	213		223	220	225		
Field : Jalalabad																			
JB-1	877	733	790										2,400	248,170	10,469	9,142	11,951	#	
JB-2	1,088	910	978										2,977	282,573	12,973	14,517	17,057	#	
JB-3	1,451	1,214	1,313										3,978	344,502	17,399	19,162	21,086	#	
JB-4	453	379	410										1,243	280,243	5,821	7,045	8,313	#	
JB-6	1,451	1,114	1,313										3,878	63,203	17,364	19,524	19,136	#	
JB-7	1,088	910	985										2,983	32,373	13,053	10,324	5,254	#	
JB-8	1,073	898	971										2,942	46,872	12,793	14,513	16,252	#	
Field Total:	7,482	6,158	6,760	0	0	0	0	0	0	0	0	0	20,400	1,297,935	89,872	94,226	99,048	#	
Daily Avg.(mmscfd)	241	220	218	0	0	0	0	0	0	0	0	0	227		246	258	271		
Field : Kailas Tila																			
KTL-1	147	109	114										371	205,181	462	0	0	#	

Monthly Production by Field and Well upto March- 2019



HYDROCARBON UNIT

Energy & Mineral Resources Division

Figures in mmscf

Well	Jan	Feb	Mar	Apr	May	Jun	Jul	Aug	Sep	Oct	Nov	Dec	Total	Cumulative	2018	2017	2016	CU
KTL-2	612	551	610										1,772	179,919	7,190	7,242	7,282	#
KTL-3	235	209	228										671	138,491	2,947	3,255	5,003	#
KTL-4	253	228	254										736	96,831	3,336	3,680	3,499	#
KTL-5	0	0	0										0	17,923	0	0	0	#
KTL-6	770	689	765										2,224	93,313	8,950	9,086	8,975	#
KTL-7	0	0	0										0	816	0	0	329	#
Field Total:	2,017	1,787	1,971	0	0	0	0	0	0	0	0	0	5,775	732,473	22,886	23,263	25,088	#
Daily Avg.(mmscfd)	65	64	64	0	0	0	0	0	0	0	0	0	64		63	64	69	
Field :	Kamta																	
Kamta-1	Production Suspended													21,139				#
Field Total:			0												21,139			#
Daily Avg.(mmscfd)																		
Field :	Meghna																	
M-1	372	308	314										995	69,968	4,538	4,625	4,425	#
Field Total:	372	308	314	0	0	0	0	0	0	0	0	0	995	69,968	4,538	4,625	4,425	#
Daily Avg.(mmscfd)	12	11	10	0	0	0	0	0	0	0	0	0	11		12	13	12	
Field :	Moulavi Bazar																	
MV Bazar-2	121	79	72										272	54,310	2,302	2,866	3,201	#
MV Bazar-3	207	149	124										480	158,289	3,712	4,705	5,394	#
MV Bazar-4	159	102	67										328	58,395	3,103	3,945	4,141	#
MV Bazar-5	0	0	0											66				#
MV Bazar-6	193	182	132										507	16,856	1,734	1,676	1,737	#
MV Bazar-7	1	1	0										2	5,646	21	152	123	#
MV Bazar-9	0	0	0										0	30,335	1	0	41	#
Field Total:	682	511	396	0	0	0	0	0	0	0	0	0	1,589	323,897	10,872	13,345	14,638	#
Daily Avg.(mmscfd)	22	18	13	0	0	0	0	0	0	0	0	0	18		30	37	40	
Field :	Narshingdi																	
N-1	530	479	530										1,539	146,134	6,181	6,279	6,242	#
N-2	314	278	313										905	56,275	3,705	3,962	4,122	#

Monthly Production by Field and Well upto March- 2019



HYDROCARBON UNIT

Energy & Mineral Resources Division

Figures in mmscf

Well	Jan	Feb	Mar	Apr	May	Jun	Jul	Aug	Sep	Oct	Nov	Dec	Total	Cumulative	2018	2017	2016	Ct
Field Total:	844	757	843	0	0	0	0	0	0	0	0	0	2,444	202,408	9,886	10,241	10,364	#
Daily Avg.(mmscfd)	27	27	27	0	0	0	0	0	0	0	0	0	27		27	28	28	
Field :	Rashidpur																	
RP-1	542	491	530										1,563	168,626	6,505	6,625	6,639	#
RP-2	0	0	0										0	82,474				#
RP-3	300	271	300										870	132,078	3,541	3,730	3,877	#
RP-4	267	239	262										769	128,664	3,227	3,516	3,675	#
RP-5	0	0	0										0	25,647				#
RP-6	0	0	0										0	9,983	0	0	0	#
RP-7	173	155	163										491	64,816	2,096	2,225	2,355	#
RP-8	314	284	314										912	19,945	3,696	3,977	4,422	#
Field Total:	1,597	1,439	1,569	0	0	0	0	0	0	0	0	0	4,605	632,234	19,065	20,074	20,969	#
Daily Avg.(mmscfd)	52	51	51	0	0	0	0	0	0	0	0	0	51		52	55	57	
Field :	Salda Nadi																	
Salda-1	0	0	0										0	36,904	0	0	0	#
Salda-2	0	0	0										0	28,495	0	0	0	#
Salda-3	123	119	135										377	25,958	1,067	1,514	2,350	#
Salda-4	4	5	5										15	132	70	14	34	#
Field Total:	127	124	140	0	0	0	0	0	0	0	0	0	392	91,488	1,137	1,527	2,383	#
Daily Avg.(mmscfd)	4	4	5	0	0	0	0	0	0	0	0	0	4		3	4	7	
Field :	Sangu																	
Sangu-1	0	0	0	0	0	0	0	0	0	0	0	0	0	116,191	0	0	0	#
Sangu-3z	0	0	0	0	0	0	0	0	0	0	0	0	0	131,796	0	0	0	#
Sangu-4	Production Suspended						0	0	0	0	0	0		87,280				#
Sangu-5	Production Suspended						0	0	0	0	0	0		61,674				#
Sangu-7	Production Suspended						0	0	0	0	0	0		18,202				#
Sangu-8	Production Suspended						0	0	0	0	0	0		37,619				#
Sangu-9	0	0	0	0	0	0	0	0	0	0	0	0	0	30,638	0	0	0	#
Sangu-10	Production Suspended						0	0	0	0	0	0						#
Sangu-11	0	0	0	0	0	0	0	0	0	0	0	0	0	6,067	0	0	0	#

Monthly Production by Field and Well upto March- 2019



HYDROCARBON UNIT

Energy & Mineral Resources Division

Figures in mmscf

Well	Jan	Feb	Mar	Apr	May	Jun	Jul	Aug	Sep	Oct	Nov	Dec	Total	Cumulative	2018	2017	2016	Unit
Field Total:	0	0	0	0	0	0	0	0	0	0	0	0	0	489,467	0	0	0	#
Daily Avg.(mmscfd)	0	0	0	0	0	0	0	0	0	0	0	0	0		0	0	0	
Field : Semutang																		
Semutang-5	14	12	12										39	12,104	291	471	946	#
Semutang-6	7	11	14										32	988	84	66	0	#
Field Total:	22	23	27	0	0	0	0	0	0	0	0	0	71	13,092	375	537	946	#
Daily Avg.(mmscfd)	1	1	1	0	0	0	0	0	0	0	0	0	1		1	1	3	
Field : Shahbazpur																		
Shahbazpur-1	0	0	0										0	21,358	134	4,835	3,623	#
Shahbazpur-2	534	523	637										1,693	12,776	6,650	4,243	189	#
Shahbazpur-3	377	436	505										1,318	13,645	5,222	1,162	3,116	#
Shahbazpur-4	513	452	567										1,531	14,535	6,936	1,801	1,091	#
Field Total:	1,424	1,411	1,709	0	0	0	0	0	0	0	0	0	4,543	62,313	18,943	12,041	8,019	#
Daily Avg.(mmscfd)	46	50	55	0	0	0	0	0	0	0	0	0	50		52	33	22	
Field : Srikail																		
Srikail-2	442	417	461										1,321	39,264	5,154	5,384	6,064	#
Srikail-3	358	333	363										1,053	35,885	4,273	4,944	6,607	#
Srikail-4	276	256	277										809	9,254	2,971	3,439	2,035	#
Field Total:	1,076	1,005	1,102	0	0	0	0	0	0	0	0	0	3,183	84,403	12,398	13,767	14,707	#
Daily Avg.(mmscfd)	35	36	36	0	0	0	0	0	0	0	0	0	35		34	38	40	
Field : Sundalpur																		
Sundalpur -1	0	0	0										0	9,809	0	0	552	#
Sundalpur -2	220	200	220										640	2,816	2,176	0	0	#
Field Total:	220	200	220	0	0	0	0	0	0	0	0	0	640	12,625	2,176	0	552	#
Daily Avg.(mmscfd)	7	7	7	0	0	0	0	0	0	0	0	0	7		6	0	2	
Field : Sylhet																		
Sylhet-3	Production Suspended													89,032				#
Sylhet-6	Production Suspended													91,748				#

Monthly Production by Field and Well upto March- 2019



HYDROCARBON UNIT

Energy & Mineral Resources Division

Figures in mmscf

Well	Jan	Feb	Mar	Apr	May	Jun	Jul	Aug	Sep	Oct	Nov	Dec	Total	Cumulative	2018	2017	2016	CU
Sylhet-7	131	108	118										356	27,346	1,622	2,061	2,212	#
Surma-1	0	0	0										0	6,528	0	249	720	#
Field Total:	131	108	118	0	0	0	0	0	0	0	0	0	356	214,654	1,622	2,309	2,932	#
Daily Avg.(mmscfd)	4	4	4	0	0	0	0	0	0	0	0	0	4		4	6	8	
Field :	Titas																	
Titas-1	675	537	559										1,771	441,400	8,516	7,897	9,999	#
Titas-2	962	865	939										2,765	438,270	11,522	11,506	11,474	#
Titas-3	0	0	0	0	0	0	0	0	0	0	0	0	0	314,888	0			#
Titas-4	994	861	960										2,815	373,267	11,726	11,798	12,782	#
Titas-5	1,020	899	997										2,917	431,168	11,838	11,869	10,692	#
Titas-6	978	878	958										2,814	365,942	12,030	12,029	12,809	#
Titas-7	947	824	977										2,748	347,612	11,919	11,707	12,125	#
Titas-8	510	426	498										1,434	274,070	6,154	6,889	7,046	#
Titas-9	539	475	517										1,531	278,020	6,706	8,246	8,467	#
Titas-10	647	565	636										1,847	200,848	7,612	7,431	4,350	#
Titas-11	855	762	867										2,484	249,385	9,998	10,276	9,075	#
Titas-12	482	422	483										1,387	102,162	5,160	5,168	5,326	#
Titas-13	580	513	576										1,669	191,762	6,952	7,879	9,553	#
Titas-14	576	498	566										1,639	151,624	7,203	8,309	8,888	#
Titas-15	460	412	434										1,306	140,820	5,543	7,973	11,777	#
Titas-16	669	592	646										1,907	148,253	8,605	10,060	11,333	#
Titas-17	515	431	507										1,453	40,956	6,335	7,011	7,359	#
Titas-18	546	458	535										1,539	39,545	6,664	7,168	7,338	#
Titas-19	507	450	489										1,446	29,495	6,115	6,106	6,253	#
Titas-20	305	277	310										892	19,720	3,914	3,635	3,645	#
Titas-21	253	232	258										742	9,974	2,995	2,800	1,572	#
Titas-22	309	284	296										889	25,306	4,158	4,336	5,497	#
Titas-27	487	404	478										1,369	30,208	5,827	6,136	6,233	#
Titas-23	483	436	489										1,408	11,413	5,594	4,410		#
Titas-24	202	185	207										593	5,585	2,709	2,283		#
Titas-25	528	476	528										1,533	13,748	6,324	5,622	269	#
Titas-26	809	733	801										2,343	21,609	9,672	9,210	383	#

Monthly Production by Field and Well upto March- 2019



HYDROCARBON UNIT
Energy & Mineral Resources Division

Figures in mmscf

Well	Jan	Feb	Mar	Apr	May	Jun	Jul	Aug	Sep	Oct	Nov	Dec	Total	Cumulative	2018	2017	2016
Field Total:	15,838	13,893	15,509	0	0	0	0	0	0	0	0	0	45,241	4,697,048	191,792	197,756	184,246
Daily Avg.(mmscfd)	511	496	500	0	0	0	0	0	0	0	0	0	503		525	542	505
Field : Begumganj																	
Begumganj-3	176	179	200										555	2,025	593	0	85
Field Total:	176	179	200	0	0	0	0	0	0	0	0	0	555	2,025	593	0	85
Daily Avg.(mmscfd)	6	6	6	0	0	0	0	0	0	0	0	0	6		2	0	0
Field : Rupganj																	
Rupganj-1	0	0	0										0	679	0	679	
Field Total:	0	0	0	0	0	0	0	0	0	0	0	0	0	679	0	679	
Daily Avg.(mmscfd)	0	0	0	0	0	0	0	0	0	0	0	0	0		0	2	
Grand Total (in Bcf)	83.29	72.98	80.78	0.00	0.00	0.00	0	0.00	0.00	0.00	0.00	0.00	237.1	16,696.14	964.7	979.8	973.1
Daily Avg.(mmscfd)	2,687	2,606	2,606	0	0	0	0	0	0	0	0	0	2,634		2,643	2,684	2,666

Monthly Condensate Production by Fields upto March 2019



Field Name	Jan-19	Feb-19	Mar-19	Apr-19	May-19	Jun-19	Jul-19	Aug-19	Sep-19	Oct-19	Nov-19	Dec-19	Total	Cumulative	2018	2017	2016
														000' bbl			
Bakhrabad	475	462	432										1,369	1,021	5,022	6,173	7,091
Daily Avg.	15	17	14	0	0	0	0	0	0	0	0	0	15		14	17	229
Bangura	9,547	8,321	8,755										26,623	1,092	94,737	103,198	103,416
Daily Avg.	308	297	282	0	0	0	0	0	0	0	0	0	296		260	283	3,336
Beani Bazar	4,207	3,945	4,525										12,676	1,580	51,187	68,202	56,146
Daily Avg.	136	141	146	0	0	0	0	0	0	0	0	0	141		140	187	1,811
Bibiwana	286,489	247,882	275,825										810,196	21,964	3,267,318	3,283,757	3,291,906
Daily Avg.	9,242	8,853	8,898	0	0	0	0	0	0	0	0	0	9,002		8,952	8,997	106,191
Chattak	0	0	0	0	0	0	0	0	0	0	0	0	0	4	0		
Daily Avg.	0	0	0	0	0	0	0	0	0	0	0	0	0		0		
Fenchuganj	126	80	121										327	115	1,625	2,462	6,138
Daily Avg.	4	3	4	0	0	0	0	0	0	0	0	0	4		4	7	198
Feni	0	0	0	0	0	0	0	0	0	0	0	0	0	110	0	0	0
Daily Avg.	0	0	0	0	0	0	0	0	0	0	0	0	0		0	0	0
Habiganj	721	610	776										2,107	132	5,612	3,955	4,143
Daily Avg.	23	22	25	0	0	0	0	0	0	0	0	0	23		15	11	134
Jalalabad	29,901	23,874	25,898										79,673	10,219	367,160	437,070	528,191
Daily Avg.	965	853	835	0	0	0	0	0	0	0	0	0	885		1,006	1,197	17,038
Kailas Tila	17,562	17,085	16,738										51,385	7,846	189,620	203,979	223,169
Daily Avg.	567	610	540	0	0	0	0	0	0	0	0	0	571		520	559	7,199
Kamta	Production Suspended									0	0			4			
Daily Avg.										0	0		0		0	0	
Meghna	589	514	647										1,750	109	7,947	7,741	7,735
Daily Avg.	19	18	21	0	0	0	0	0	0	0	0	0	19		22	21	250
Moulavi Bazar	104	80	63										246	117	856	1,128	1,585
Daily Avg.	3	3	2	0	0	0	0	0	0	0	0	0	3		2	3	51

Monthly Condensate Production by Fields upto March 2019



Field Name	Jan-19	Feb-19	Mar-19	Apr-19	May-19	Jun-19	Jul-19	Aug-19	Sep-19	Oct-19	Nov-19	Dec-19	Total	Cumulative	2018	2017	2016
														000' bbl			
Narshingdi	1,285	1,131	1,235										3,651	421	15,797	16,656	17,534
Daily Avg.	41	40	40	0	0	0	0	0	0	0	0	0	41		43	46	566
Rashidpur	1,213	1,038	1,083										3,334	779	14,393	10,723	14,938
Daily Avg.	39	37	35	0	0	0	0	0	0	0	0	0	37		39	29	482
Saldanadi	19	19	21										59	58	137	225	386
Daily Avg.	1	1	1	0	0	0	0	0	0	0	0	0	1		0	1	12
Sangu	0	0	0	0	0	0	0	0	0	0	0	0	0	37	0	0	0
Daily Avg.	0	0	0	0	0	0	0	0	0	0	0	0	0		0	0	0
Semutang	0	0	0										0	5	26	99	272
Daily Avg.	0	0	0	0	0	0	0	0	0	0	0	0	0		0	0	9
Shahbazpur	187	148	211										546	7	2,488	1,791	839
Daily Avg.	6	5	7	0	0	0	0	0	0	0	0	0	6		7	5	27
Srikail	3,226	2,920	3,143										9,290	138	33,765	37,879	21,075
Daily Avg.	104	104	101	0	0	0	0	0	0	0	0	0	103		93	104	680
Sundalpur	10	9	10										29	0	121	0	0
Daily Avg.	0	0	0	0	0	0	0	0	0	0	0	0	0		0	0	0
Sylhet	969	864	981										2,815	798	10,277	15,593	20,532
Daily Avg.	31	31	32	0	0	0	0	0	0	0	0	0	31		28	43	662
Titas	13,655	11,331	12,573										37,559	5,261	159,803	154,262	133,133
Daily Avg.	440	405	406	0	0	0	0	0	0	0	0	0	417		438	423	4,295
Begumganj	60	60	57										177	1	201	0	0
Daily Avg.	2	0	0	0	0	0	0	0	0	0	0	0	2		1	0	0
Rupganj	0	0	0										0	1	0	1,133	
Daily Avg.	0	0	0	0	0	0	0	0	0	0	0	0	0		0	3	
Total (000'bbl)	370	320	353	0	0	0	0	0	0	0	0	0	1,044	51,821	4,228	4,356	4,438
Daily Avg. (000'bbl)	11.9	11.4	11.4	0.0	0.0	0	0.0	0.0	0.0	0.0	0	0	12		11.6	11.9	12.2

Note: Historical condensate figure of Sangu available from 2006. Sylhet available from August 1964

Monthly Water Production by Fields in March 2019



Field Name	Jan-19	Feb-19	Mar-19	Apr-19	May-19	Jun-19	Jul-19	Aug-19	Sep-19	Oct-19	Nov-19	Dec-19	Total	2,018	2,017
Bakhrabad	2,117	1,708	1,795										5,620	28,218	8,419
Daily Avg.	68	61	58	0	0	0	0	0	0	0	0	0	62	77	
Bangura	3,330	3,016	3,301										9,647	43,917	11,705
Daily Avg.	107	108	106	0	0	0	0	0	0	0	0	0	107	120	
Beani Bazar	9,793	8,568	9,561										27,922	109,854	24,865
Daily Avg.	316	306	308	0	0	0	0	0	0	0	0	0	310	301	
Bibiyana	16,351	14,524	15,756										46,631	194,651	47,219
Daily Avg.	527	519	508	0	0	0	0	0	0	0	0	0	518	533	
Chattak	0	0	0	0	0	0	0	0	0	0	0	0			
Daily Avg.	0	0	0	0	0	0	0	0	0	0	0	0	0	0	
Fenchuganj	6,323	3,006	3,558										12,886	74,969	6,700
Daily Avg.	204	107	115	0	0	0	0	0	0	0	0	0	143	205	
Feni	0	0	0	0	0	0	0	0	0	0	0	0	0	0	0
Daily Avg.	0	0	0	0	0	0	0	0	0	0	0	0	0	0	0
Habiganj	2,532	2,133	1,034										5,699	39,104	5,197
Daily Avg.	82	76	33	0	0	0	0	0	0	0	0	0	63	107	
Jalalabad	4,717	4,157	4,424										13,298	55,950	12,915
Daily Avg.	152	148	143	0	0	0	0	0	0	0	0	0	148	153	
Kailas Tila	3,934	3,519	3,851										11,304	43,233	6,809
Daily Avg.	127	126	124	0	0	0	0	0	0	0	0	0	126	118	
Kamta	0	0	0	0	0	0	0	0	0	0	0	0			
Daily Avg.	0	0	0	0	0	0	0	0	0	0	0	0	0	0	
Meghna	211	429	525										1,165	2,014	551
Daily Avg.	7	15	17	0	0	0	0	0	0	0	0	0	13	6	
Moulavi Bazar	1,379	710	735										2,824	13,965	754
Daily Avg.	44	25	24	0	0	0	0	0	0	0	0	0	31	38	
Narshingdi	883	798	888										2,569	10,374	2,645
Daily Avg.	28	29	29	0	0	0	0	0	0	0	0	0	29	28	
Rashidpur	13,567	12,332	13,512										39,411	137,406	30,969
Daily Avg.	438	440	436	0	0	0	0	0	0	0	0	0	438	376	
Saldanadi	129	115	126										369	813	387
Daily Avg.	4	4	4	0	0	0	0	0	0	0	0	0	4	2	

Monthly Water Production by Fields in March 2019



HYDROCARBON UNIT

Energy & Mineral Resources Division

Field Name	Jan-19	Feb-19	Mar-19	Apr-19	May-19	Jun-19	Jul-19	Aug-19	Sep-19	Oct-19	Nov-19	Dec-19	Total	2,018	2,017
Sangu	0	0	0	0	0	0	0	0	0	0	0	0	0	0	0
Daily Avg	0	0	0	0	0	0	0	0	0	0	0	0	0	0	0
Semutang	45	47	69										161	3,002	719
Daily Avg	1	2	2	0	0	0	0	0	0	0	0	0	2	8	
Shahbazpur	1,789	1,679	2,096										5,564	22,110	3,912
Daily Avg.	58	60	68	0	0	0	0	0	0	0	0	0	62	61	
Srikail	1,649	1,517	2,021										5,186	18,432	4,904
Daily Avg.	53	54	65	0	0	0	0	0	0	0	0	0	58	50	
Sundalpur	26	24	27										77	219	0
Daily Avg.	1	1	1	0	0	0	0	0	0	0	0	0	1	1	
Sylhet	2,312	2,022	2,221										6,555	20,362	1,298
Daily Avg.	75	72	72	0	0	0	0	0	0	0	0	0	73	56	
Titas	49,706	45,683	50,613										146,002	556,608	126,334
Daily Avg.	1,603	1,632	1,633	0	0	0	0	0	0	0	0	0	1,622	1,525	
Begumganj	69	54	61										183	207	0
Daily Avg.	2	2	2	0	0	0	0	0	0	0	0	0	2	1	
Rupganj	0	0	0										0	0	34
Daily Avg.	0	0	0	0	0	0	0	0	0	0	0	0	0	0	
Total (000'bl	120,860	106,040	116,173	0	0	0	0	0	0	0	0	0	343,073	1,375,408	296
Daily Avg. (000'bb)	3,899	3,787	3,748	0	0	0	0	0	0	0	0	0	3,812	3,768	1

Conditions of Field and Well upto March 2019



Well	company	well type	Discovery	production start	Drilled depth (ft)	Pressure	Pressure type	Completion Zone
Field : Bakharabad								
BKB-1	BGFCL	Vertical	1969	June,1969	9309		FWHP	J
BKB-2	BGFCL	Directional	1969	October,1981	7496	248-274	FWHP	G
BKB-3	BGFCL	Directional	1969	April,1982	9339	356-412	FWHP	G
BKB-4	BGFCL	Directional	1969	June,1982	9430			D
BKB-5	BGFCL	Directional	1969	Sept,1982	9675	1555-1646	FWHP	B
BKB-6	BGFCL	Directional	1969	March,1989	8785			J
BKB-7	BGFCL	Directional	1969	July,1989	8605		FWHP	J
BKB-8	BGFCL	Directional	1969	Sept,1989	8840	490-523	FWHP	J
BKB-9	BGFCL	Vertical	1969	August,2013	8318	1005-1097	FWHP	G
BKB-10	BGFCL	Directional	1969	June,2016	9291	1010-1102	FWHP	K
Field : Bangura								
Bangura-1	Tullow		2004			887-940	FWHP	D
Bangura-2	Tullow		2004			587-685	FWHP	D/E
Bangura-3	Tullow		2004			719-789	FWHP	D
Bangura-6	Tullow		2004			708-780	FWHP	D
Bangura-5	Tullow		2004			579-621	FWHP	D
Field : Beani Bazar								
BB-1	SGFL		1981	July,1999	13480	580-620	SIWHP	Upper
BB-2	SGFL		1981	July,1999	12048	3210-3220	FWHP	Upper
Field : Bibiyana								
BY-1	Chevron		1998			1547-2007	FWHP	BB60, BB66
BY-2	Chevron		1998			1313-1390	FWHP	BB60, BH20A, BH20E
BY-3	Chevron		1998			1363-1403	FWHP	BB70
BY-4	Chevron		1998			1330-1390	FWHP	BH10
BY-5	Chevron		1998			1254-1299	FWHP	BH20A, BH20B, BH20C, BH20D
BY-6	Chevron		1998			1250-1486	FWHP	BB70
BY-7	Chevron		1998			1454-1566	FWHP	BH10
BY-8	Chevron		1998			1270-1297	FWHP	BH20A, BH20B
BY-9	Chevron		1998			1243-1273	FWHP	BH10
BY-10	Chevron		1998			1465-1533	FWHP	BB60
BY-11	Chevron		1998			1260-1284	FWHP	BH20A, BH20B
BY-12	Chevron		1998			1259-1332	FWHP	BB70
BY-13	Chevron		1998			1300-1356	FWHP	BH20A, BH20B
BY-14	Chevron		1998			1342-1632	FWHP	BH20A, BH20B
BY-15	Chevron		1998			2189-2240	FWHP	BB60
BY-16	Chevron		1998			1381-1644	FWHP	BH10, BH20D

Conditions of Field and Well upto March 2019



Well	company	well type	Discovery	production start	Drilled depth (ft)	Pressure	Pressure type	Completion Zone
BY-17	<i>Chevron</i>		1998			2104-2229	<i>FWHP</i>	<i>BB60</i>
BY-18	<i>Chevron</i>		1998			1904-2218	<i>FWHP</i>	<i>BB60</i>
BY-19	<i>Chevron</i>		1998			1354-1477	<i>FWHP</i>	<i>BH10, BH20A</i>
BY-20	<i>Chevron</i>		1998			1248-1262	<i>FWHP</i>	<i>BH20D, BH20A, BH10</i>
BY-21	<i>Chevron</i>		1998			1333-1348	<i>FWHP</i>	<i>BH20A, BH20B, BH10</i>
BY-22	<i>Chevron</i>		1998			1552-1586	<i>FWHP</i>	<i>BB60</i>
BY-23	<i>Chevron</i>		1998			1739-2021	<i>FWHP</i>	<i>BH10, BH20A, BH20B, BH20C</i>
BY-24	<i>Chevron</i>		1998			1337-2091	<i>FWHP</i>	<i>BB60</i>
BY-25	<i>Chevron</i>		1998			1728-1857	<i>FWHP</i>	<i>BB60, BB66</i>
BY-26	<i>Chevron</i>		1998			1877-2094	<i>FWHP</i>	<i>BB60, BB64</i>
Field : Chattak								
Ch-1	SGFL		1959					
Field : Fenchuganj								
Fenchuganj-2	BAPEX		1988	May, 2004				
Fenchuganj-3	BAPEX		1988	February, 2005		2004-2010		<i>upper</i>
Fenchuganj-4	BAPEX		1988			2037-2065		
Field : Feni								
Feni-1	BAPEX		1981					
Feni-2	BAPEX		1981					
Feni-3	BAPEX		1981					
Feni-4	BAPEX		1981					
Feni-5	BAPEX		1981					
Field : Habiganj								
Hbj-1	BGFCL	<i>Vertical</i>	1963	Feb,1969	11500		<i>FWHP</i>	<i>upper</i>
Hbj-2	BGFCL	<i>Vertical</i>	1963	Feb,1969	5100		<i>FWHP</i>	<i>upper</i>
Hbj-3	BGFCL	<i>Vertical</i>	1963	July,1985	5282	1478-1486	<i>FWHP</i>	<i>upper</i>
Hbj-4	BGFCL	<i>Vertical</i>	1963	May,1985	5249	1460-1467	<i>FWHP</i>	<i>upper</i>
Hbj-5	BGFCL	<i>Directional</i>	1963	Feb,1992	11552	1440-1446	<i>FWHP</i>	<i>upper</i>
Hbj-6	BGFCL	<i>Vertical</i>	1963	Feb,1992	5515	1375-1379	<i>FWHP</i>	<i>upper</i>
Hbj-7	BGFCL	<i>Vertical</i>	1963	April,2000	10236	1331-1139	<i>FWHP</i>	<i>upper</i>
Hbj-8	BGFCL	<i>Vertical</i>	1963	May, 2000	5280			<i>upper</i>
Hbj-9	BGFCL	<i>Vertical</i>	1963	July,1998	5249			<i>upper</i>
Hbj-10	BGFCL	<i>Vertical</i>	1963	Apr, 2000	5133	1322-1331	<i>FWHP</i>	<i>upper</i>
Hbj-11	BGFCL	<i>Vertical</i>	1963	February,2008	10499	1417-1423	<i>FWHP</i>	<i>upper</i>
Field : Jalalabad								
JB-1	<i>Chevron</i>		1989			1333-1436	<i>FWHP</i>	<i>BB60, BB50</i>

Conditions of Field and Well upto March 2019



Well	company	well type	Discovery	production start	Drilled depth (ft)	Pressure	Pressure type	Completion Zone
JB-2	<i>Chevron</i>		1989			1279-1294	<i>FWHP</i>	<i>BB50, BB60</i>
JB-3	<i>Chevron</i>		1989			1332-1375	<i>FWHP</i>	<i>BB50, BB60</i>
JB-4	<i>Chevron</i>		1989			1365-1425	<i>FWHP</i>	<i>BB60</i>
JB-6	<i>Chevron</i>		1989			1354-1362	<i>FWHP</i>	<i>BB60, BB50</i>
JB-7	<i>Chevron</i>		1989			1666-1679	<i>FWHP</i>	<i>BB20</i>
JB-8	<i>Chevron</i>		1989			1362-1370	<i>FWHP</i>	<i>BB50, BB60</i>
Field : Kailas Tila								
KTL-1	<i>SGFL</i>		1962	<i>June, 1983</i>	<i>12417</i>	<i>0</i>	<i>SIWHP</i>	
KTL-2	<i>SGFL</i>		1962	<i>Feb, 1995</i>		<i>2225-2230</i>	<i>FWHP</i>	
KTL-3	<i>SGFL</i>		1962	<i>March, 1995</i>		<i>2470-2495</i>	<i>FWHP</i>	
KTL-4	<i>SGFL</i>		1962	<i>March, 1997</i>		<i>2360-2410</i>	<i>FWHP</i>	
KTL-5	<i>SGFL</i>		1962	<i>Sep, 2006</i>		<i>0</i>	<i>SIWHP</i>	
KTL-6	<i>SGFL</i>		1962	<i>Aug, 2007</i>		<i>2490-2495</i>	<i>FWHP</i>	
KTL-7	<i>SGFL</i>		1962			<i>0</i>	<i>SIWHP</i>	
Field : Kamta								
Kamta-1	<i>BGFCL</i>	<i>Vertical</i>	1981	<i>july,1982</i>	<i>11857</i>			<i>N/A</i>
Field : Meghna								
M-1	<i>BGFCL</i>	<i>Vertical</i>	2004	<i>july,1990</i>	<i>10069</i>	<i>1400-1450</i>	<i>FWHP</i>	<i>A,E,F & G</i>
Field : Moulavi Bazar								
MV Bazar-2	<i>Chevron</i>		1997			<i>800-820</i>	<i>FWHP</i>	<i>BB70</i>
MV Bazar-3	<i>Chevron</i>		1997			<i>800-820</i>	<i>FWHP</i>	<i>BB70</i>
MV Bazar-4	<i>Chevron</i>		1997			<i>946-952</i>	<i>FWHP</i>	<i>BB20</i>
MV Bazar-5	<i>Chevron</i>		1997			<i>0</i>	<i>SIWHP</i>	<i>BB60</i>
MV Bazar-6	<i>Chevron</i>		1997			<i>822-890</i>	<i>FWHP</i>	<i>BB20</i>
MV Bazar-7	<i>Chevron</i>		1997			<i>844-901</i>	<i>FWHP/SIWHP</i>	<i>BB20</i>
MV Bazar-9	<i>Chevron</i>		1997			<i>0</i>	<i>SIWHP</i>	<i>BB46, BB48, BB60</i>
Field : Narshingdi								
N-1	<i>BGFCL</i>	<i>vertical</i>	1990	<i>october,1990</i>	<i>11320</i>	<i>1143-1197</i>	<i>FWHP</i>	<i>BL</i>
N-2	<i>BGFCL</i>	<i>vertical</i>	1990	<i>february,2007</i>	<i>10778</i>	<i>1015-1097</i>	<i>FWHP</i>	<i>BL</i>
Field : Rashidpur								
RP-1	<i>SGFL</i>		1960			<i>1290-1291</i>	<i>FWHP</i>	<i>Upper</i>
RP-2	<i>SGFL</i>		1960			<i>73</i>	<i>SIWHP</i>	<i>Lower</i>
RP-3	<i>SGFL</i>		1960			<i>1548-1568</i>	<i>FWHP</i>	<i>Lower</i>
RP-4	<i>SGFL</i>		1960			<i>1450-1655</i>	<i>FWHP</i>	<i>Lower</i>
RP-5	<i>SGFL</i>		1960			<i>2291</i>	<i>SIWHP</i>	<i>Lower</i>
RP-6	<i>SGFL</i>		1960			<i>870</i>	<i>SIWHP</i>	<i>A</i>

Conditions of Field and Well upto March 2019



Well	company	well type	Discovery	production start	Drilled depth (ft)	Pressure	Pressure type	Completion Zone
RP-7	SGFL		1960			1308-1338	FWHP	Lower
RP-8	SGFL		1960			1600-1625	FWHP	Upper
Field : Salda Nadi								
Salda-1	BAPEX		1995					
Salda-2	BAPEX		1995					
Salda-3	BAPEX	Directional	1995	February, 2012		639-640, 698-700		Upper/Lower
Salda-4	BAPEX		1995					
Field : Sangu								
Sangu-1	BGFCL		1996					
Sangu-3z	BGFCL		1996					
Sangu-4	BGFCL		1996					
Sangu-5	BGFCL		1996					
Sangu-7	BGFCL		1996					
Sangu-8	BGFCL		1996					
Sangu-9	BGFCL		1996					
Sangu-10	BGFCL		1996					
Sangu-11	BGFCL		1996					
Field : Semutang								
Semutang-5	BAPEX		1967			280-508		Lower Zone
Semutang-6	BAPEX		1967			750-1302		
Field : Shahbazpur								
Shahbazpur-1	BAPEX		1995	May, 2009		2310-3543		Lower Zone
Shahbazpur-2	BAPEX		1995			3541-4133		Lower Zone
Shahbazpur-3	BAPEX		1995			4300		Upper Zone
Shahbazpur-4	BAPEX		1995			4250		Upper Zone
Field : Srikail								
Srikail-2	BAPEX		2012			990-1016		Upper & Lower D
Srikail-3	BAPEX		2012			981-1043		Upper & Lower D
Srikail-4	BAPEX		2012			1018-1068		Upper & Lower D
Field : Sundalpur								
Sundalpur -1	BAPEX		2011					
Sundalpur -2	BAPEX		2011					
Field : Sylhet								
Sylhet-3	SGFL		1955	Aug, 1958				
Sylhet-6	SGFL		1955	Aug, 1964		800-850	SIWHP	
Sylhet-7	SGFL		1955	Apr, 2005		1750-1820	FWHP	Lower Bokabil

Conditions of Field and Well upto March 2019

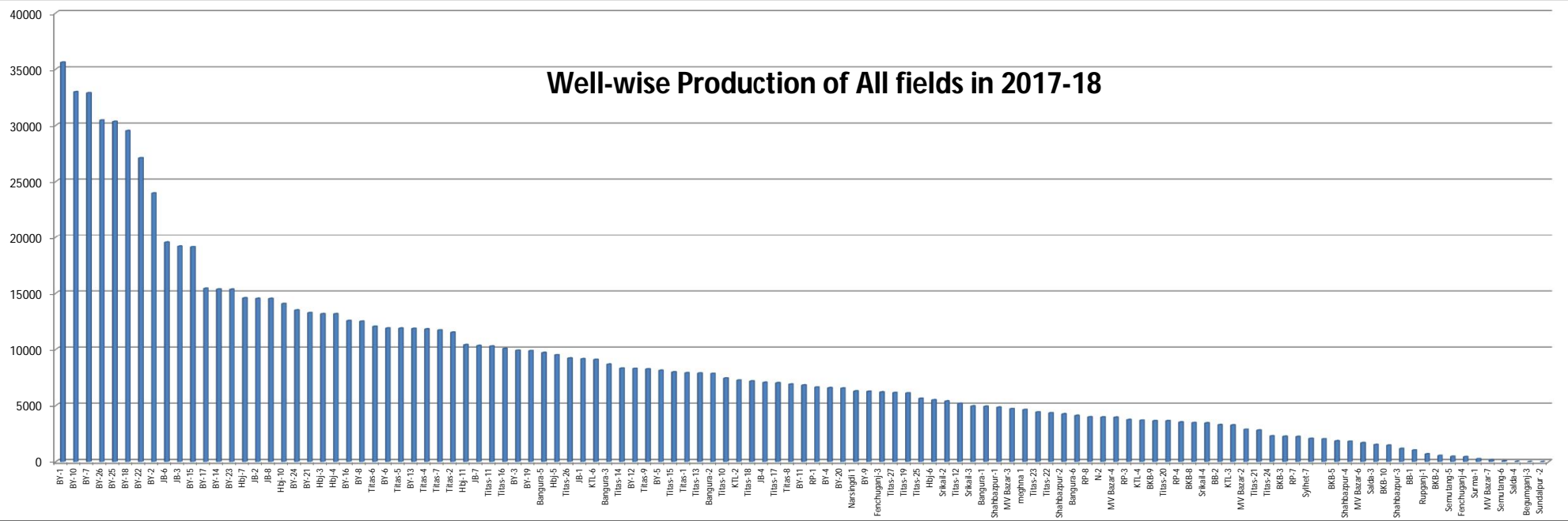


HYDROCARBON UNIT

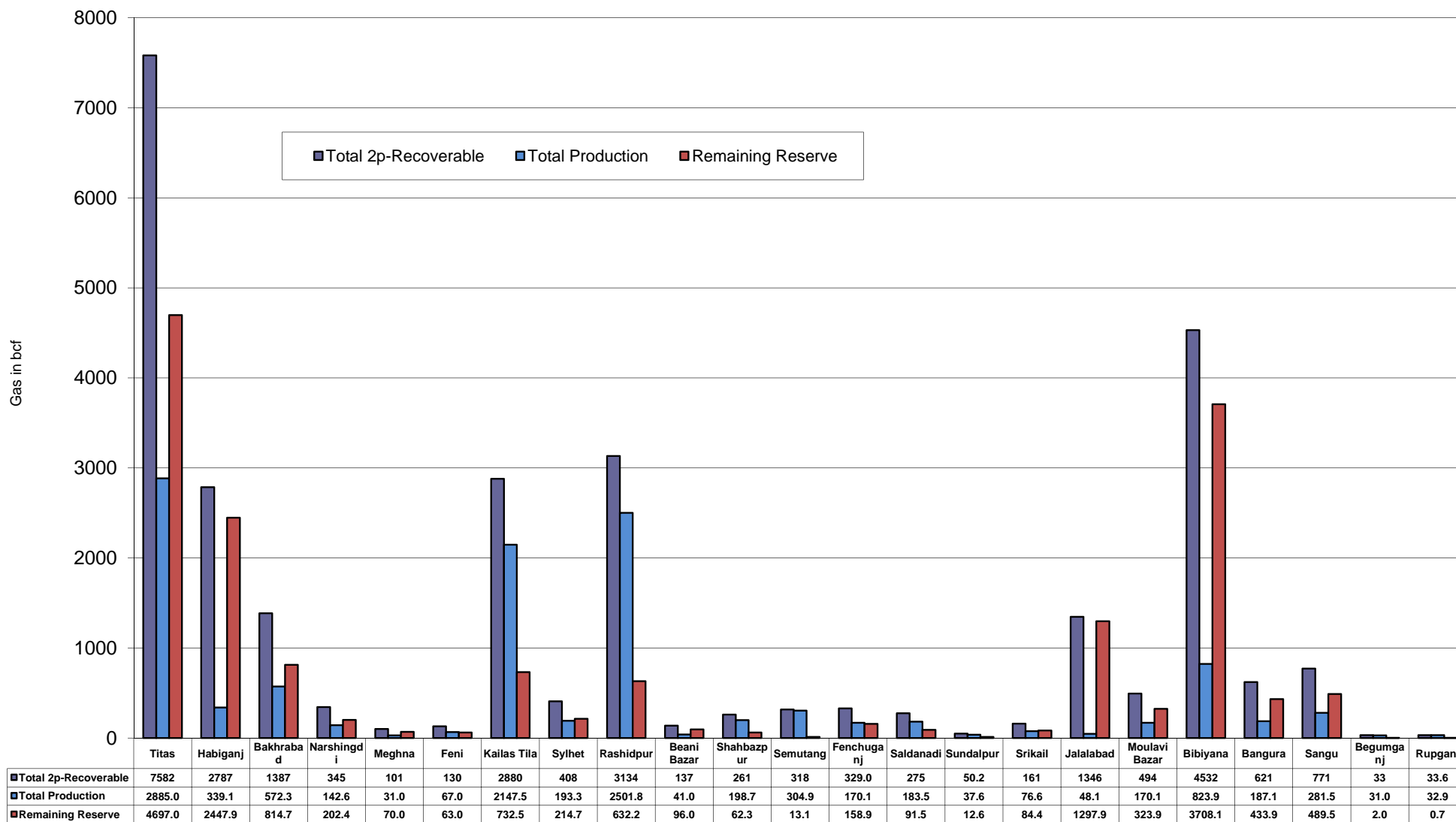
Energy & Mineral Resources Division

Well	company	well type	Discovery	production start	Drilled depth (ft)	Pressure	Pressure type	Completion Zone
Surma-1	SGFL		1955	June, 2010		230	SIWHP	C & D
Field : Titas								
Titas-1	BGFCL	vertical	1962	Mar,1969	12325	900-925	FWHP	A
Titas-2	BGFCL	vertical	1962	Fen,1969	10574	960-1020	FWHP	A
Titas-3	BGFCL	vertical	1962	sept,1969	9315	0	FWHP	A
Titas-4	BGFCL	vertical	1962	oct,1969	9350	1020-1070	FWHP	A
Titas-5	BGFCL	Directional	1962	jan,1981	10805	990-1035	FWHP	A
Titas-6	BGFCL	vertical	1962	Feb,1984	10072	1195-1225	FWHP	A
Titas-7	BGFCL	Directional	1962	July,1985	11006	1090-1160	FWHP	A
Titas-8	BGFCL	Directional	1962	sept,1985	11760	1000-1030	FWHP	B & C
Titas-9	BGFCL	Directional	1962	jan,1988	11893	1040-1085	FWHP	B & C
Titas-10	BGFCL	Directional	1962	may,1988	12139	1140-1180	FWHP	A
Titas-11	BGFCL	vertical	1962	Jun,1991	10462	1275-1310	FWHP	A
Titas-12	BGFCL	Directional	1962	July,2002	9873	1465-1500	FWHP	A
Titas-13	BGFCL	Directional	1962	June,2000	11487	1085-1115	FWHP	A
Titas-14	BGFCL	Directional	1962	June,2000	11004	1200-1250	FWHP	A
Titas-15	BGFCL	vertical	1962	may,2006	10446	0	FWHP	A
Titas-16	BGFCL	Directional	1962	dec,2005	11673	1205-1225	FWHP	A
Titas-17	BGFCL	vertical	1962	feb,2013	9424	1145-1175	FWHP	A
Titas-18	BGFCL	Directional	1962	august,2013	10932	1165-1190	FWHP	A
Titas-19	BGFCL	Directional	1962	may,2014	12730	1365-1415	FWHP	A
Titas-20	BGFCL	Directional	1962	oct,2013	11585	1370-1440	FWHP	A
Titas-21	BGFCL	Directional	1962	dec,2013	11631	1260-1285	FWHP	A
Titas-22	BGFCL	Directional	1962	march,2014	11926	990-1025	FWHP	A
Titas-27	BGFCL	Directional	1962	april,2014	10292	1245-1265	FWHP	A
Titas-23	BGFCL	Directional	1962	feb,2017	11988	2265-2340	FWHP	C
Titas-24	BGFCL	Directional	1962	oct,2016	12686	1120-1245	FWHP	C
Titas-25	BGFCL	vertical	1962	march,2016	11680	1300-1340	FWHP	A
Titas-26	BGFCL	Directional	1962	july,2016	12618	1840-1875	FWHP	C
Field : Begumganj								
Begumganj-3	BAPEX		1977					
Field : Rupganj								
Rupganj-1	BAPEX		2014			38-88		

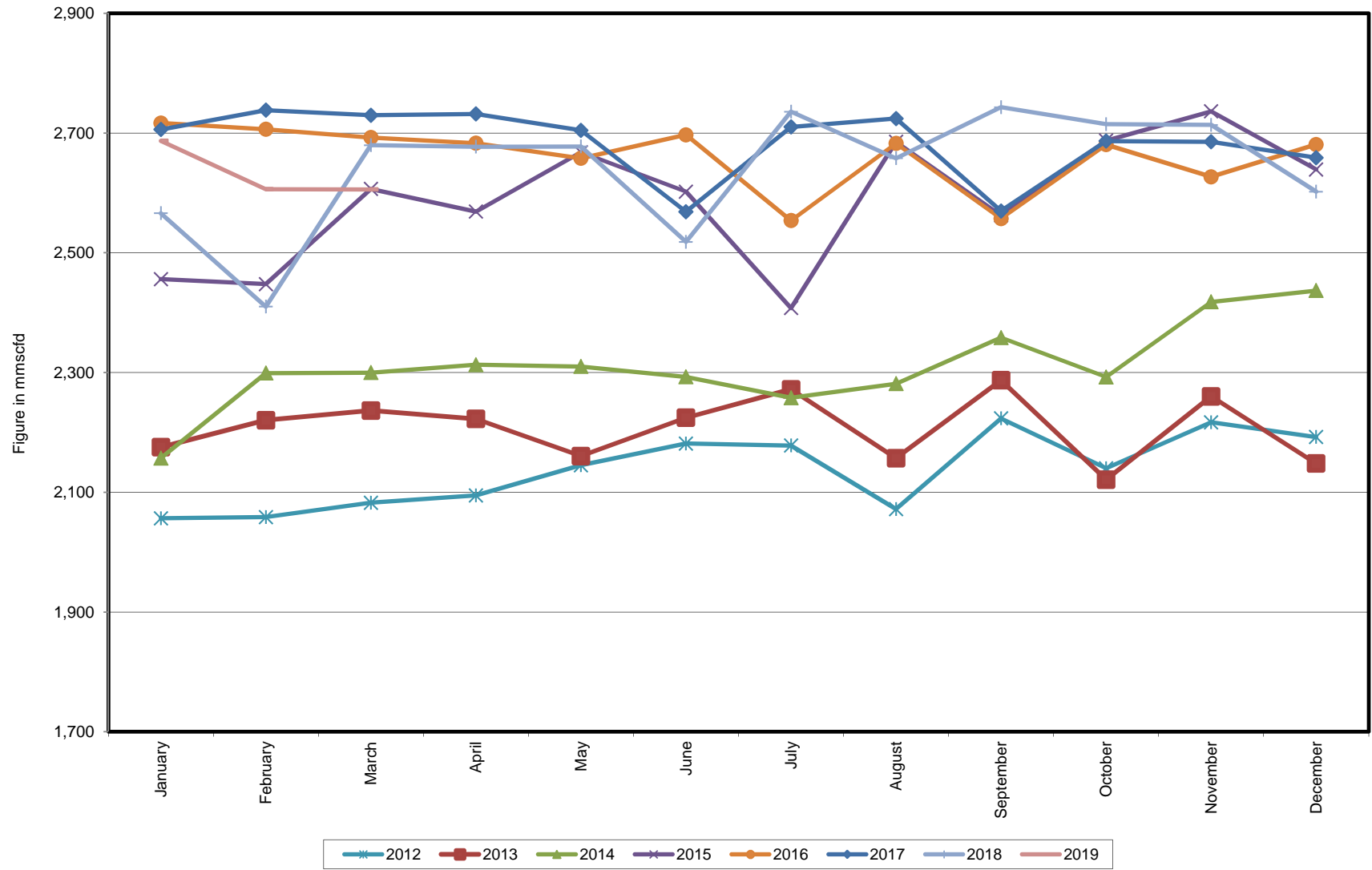
Well-wise Production of All fields in 2017-18



Reserve, Production and Remaining Reserve as of March 2019



Daily Avg. Production From January 2012 to March 2019



Field Wise Daily Avg. Production March 2019

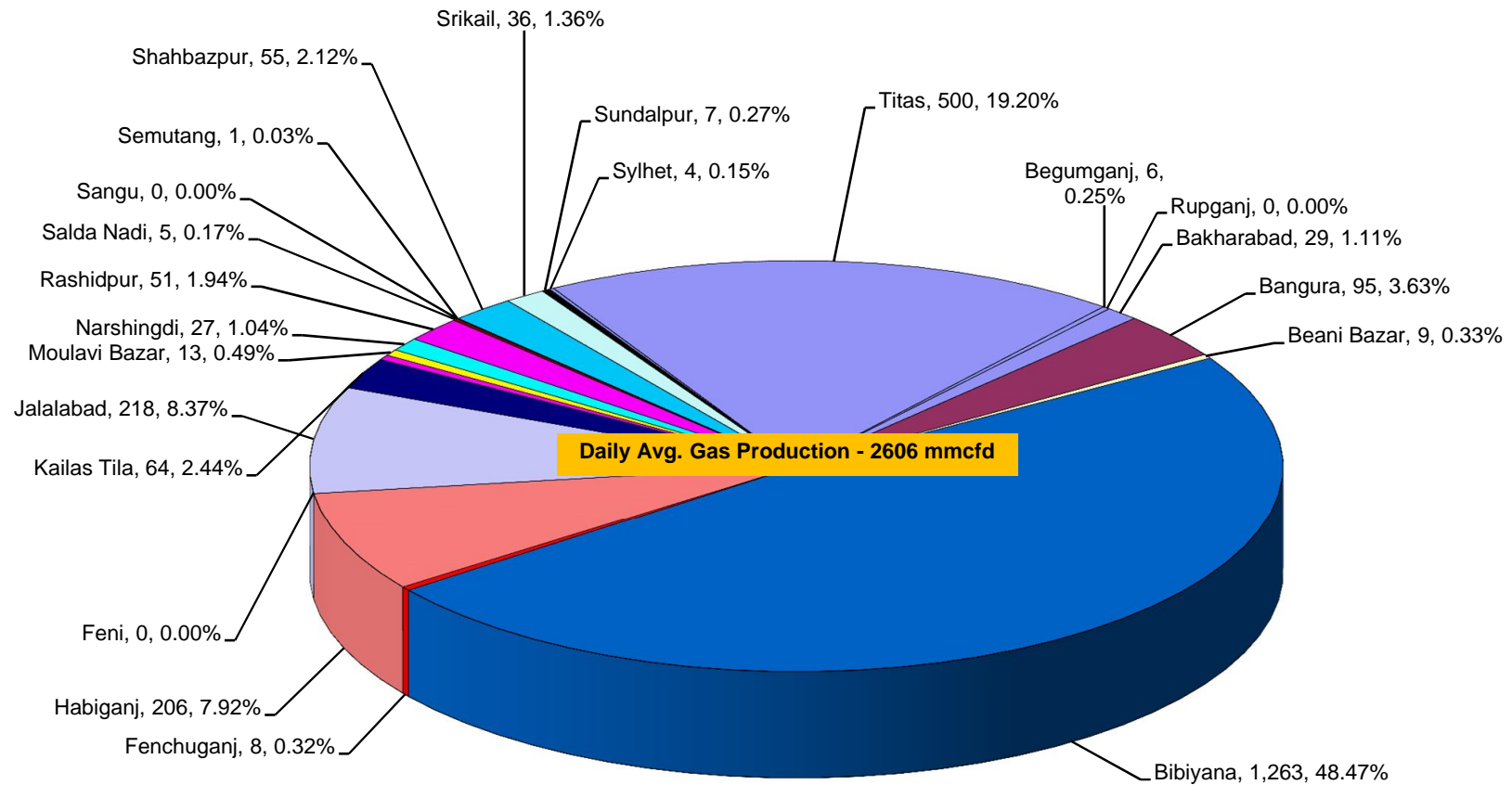
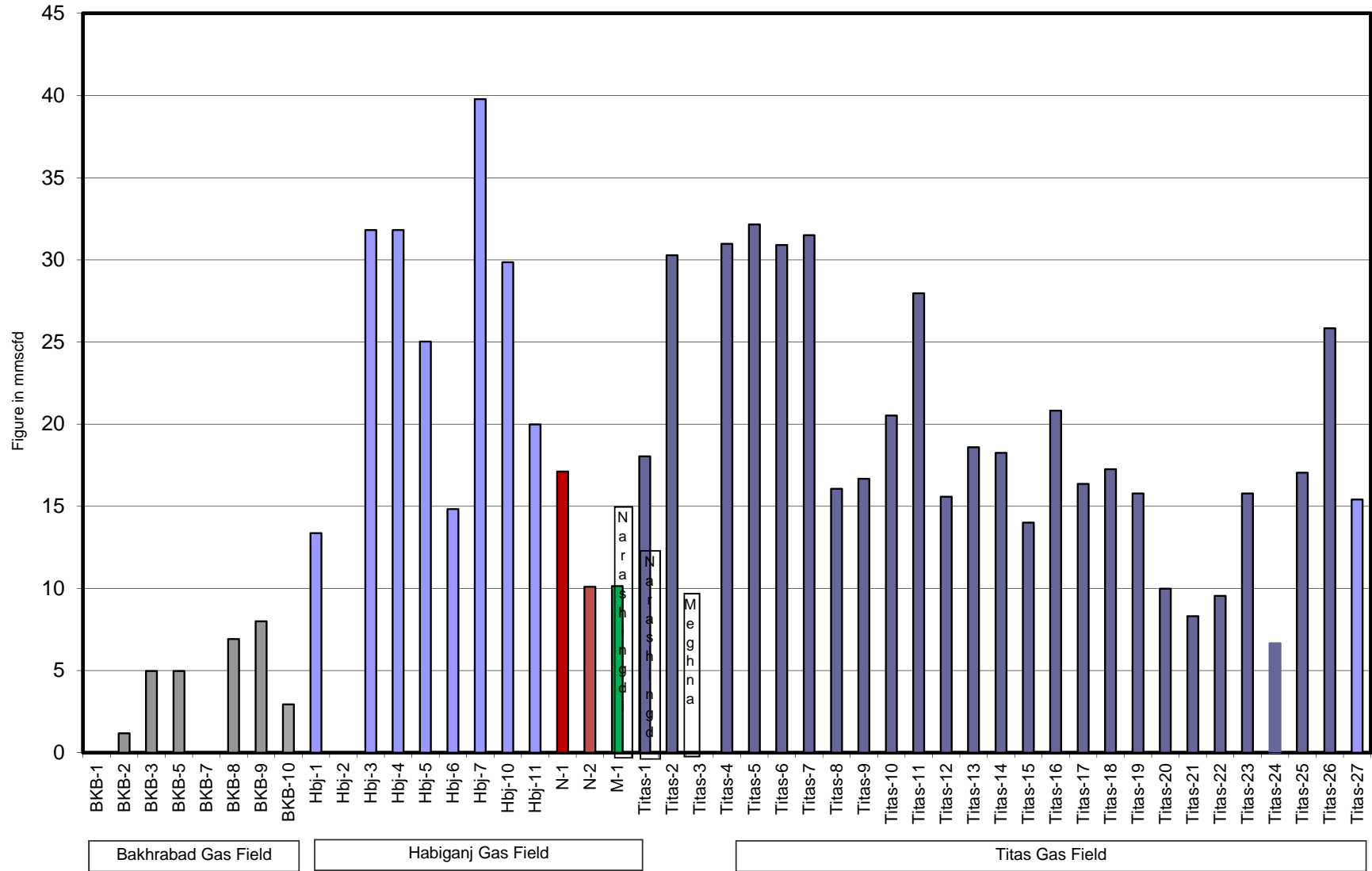


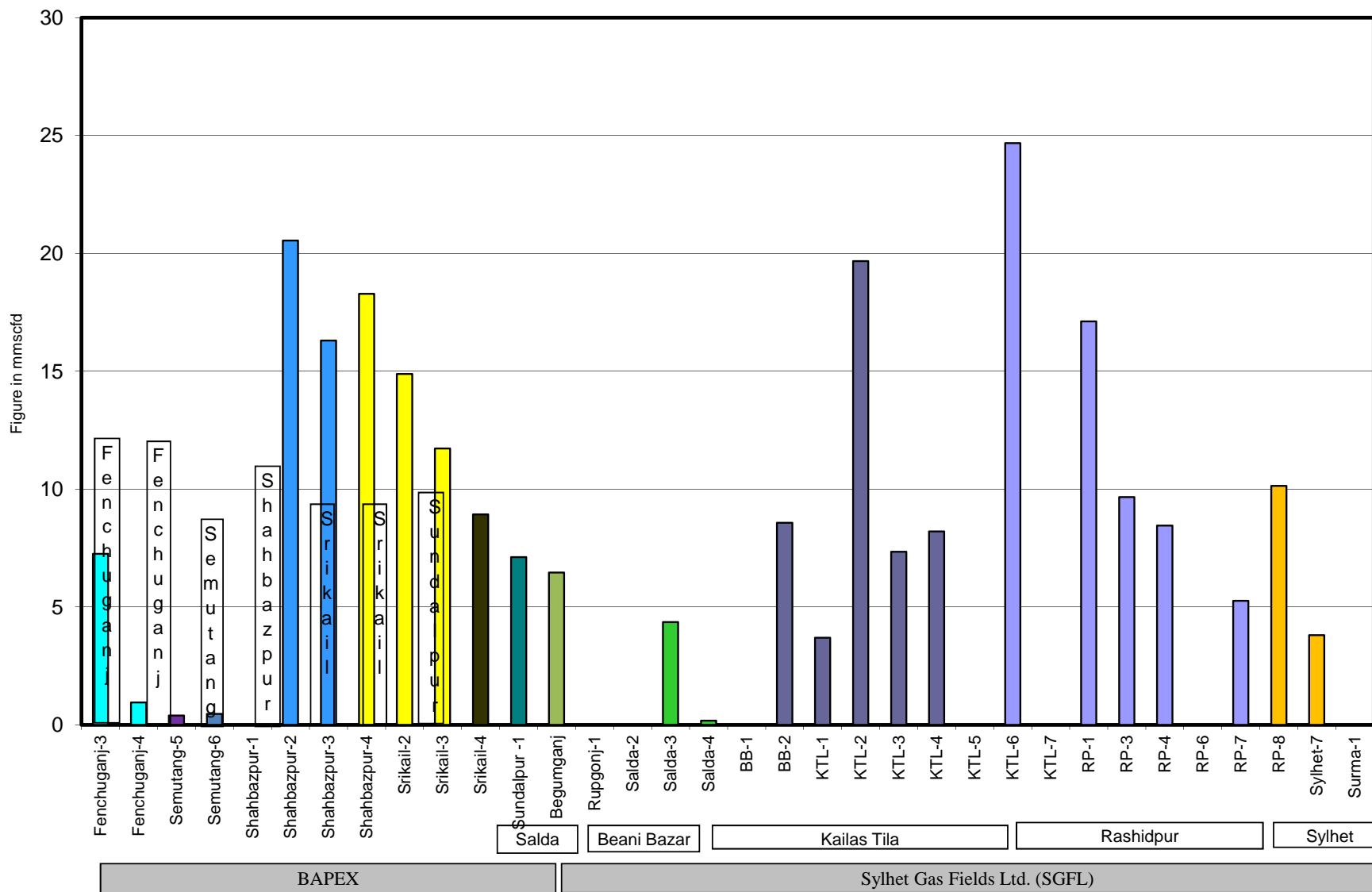
Figure in mmcf
and % of total production

Wellwise Daily Avg. Production- BGFCL March 2019

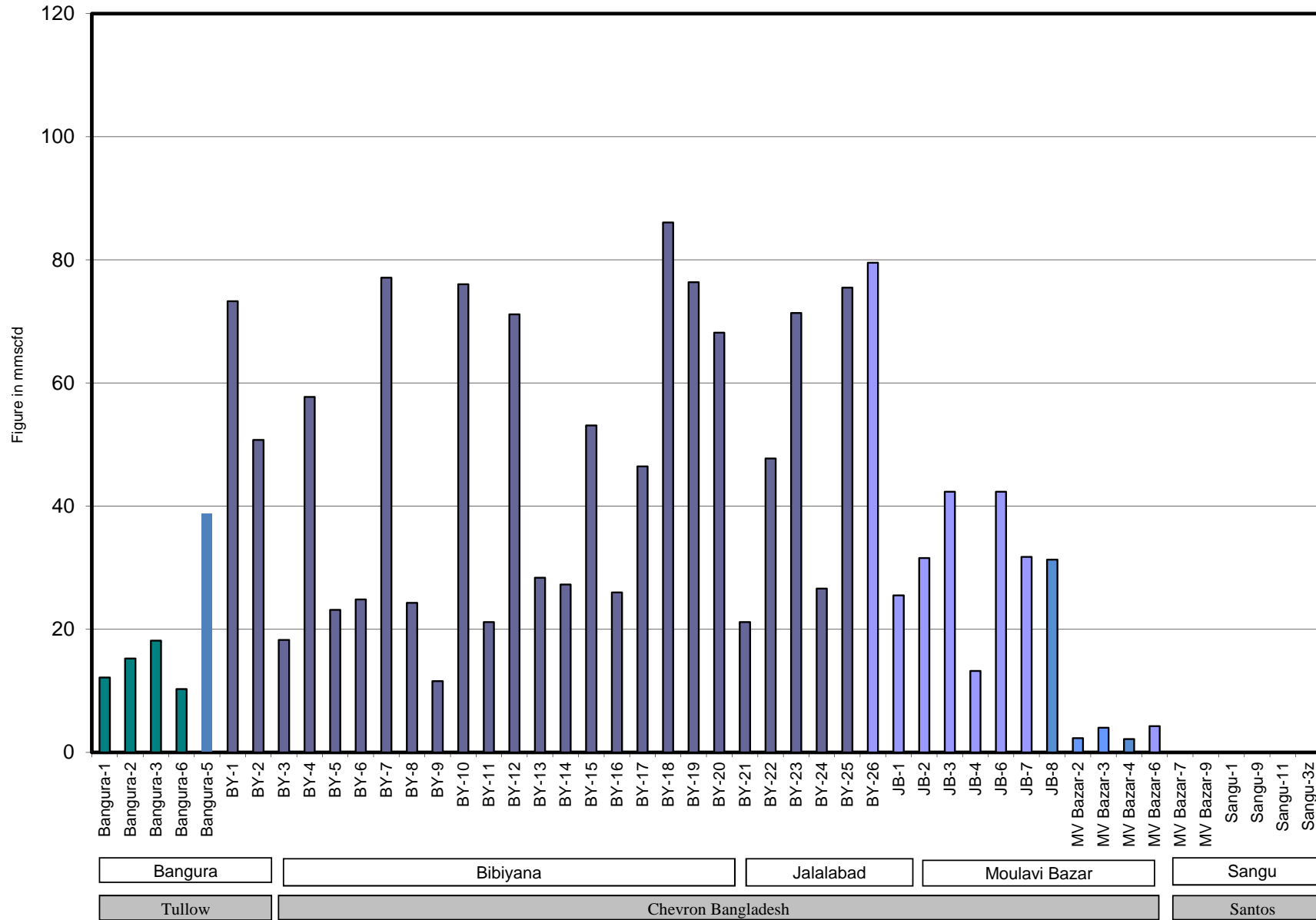


Bangladesh Gas Fields Co. Ltd. (BGFCL)

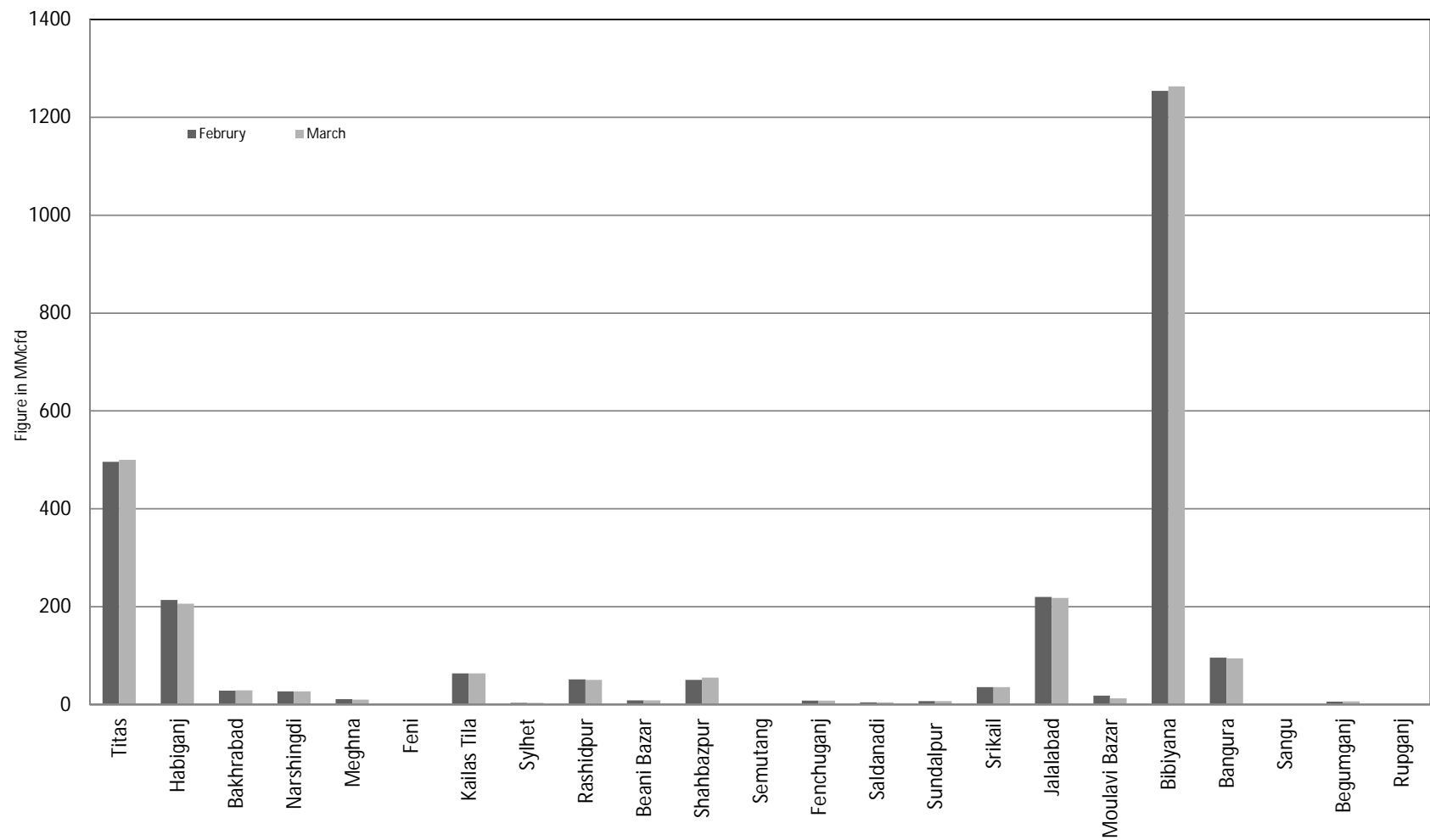
Wellwise Daily Avg. Production- Bapex and SGFL March 2019



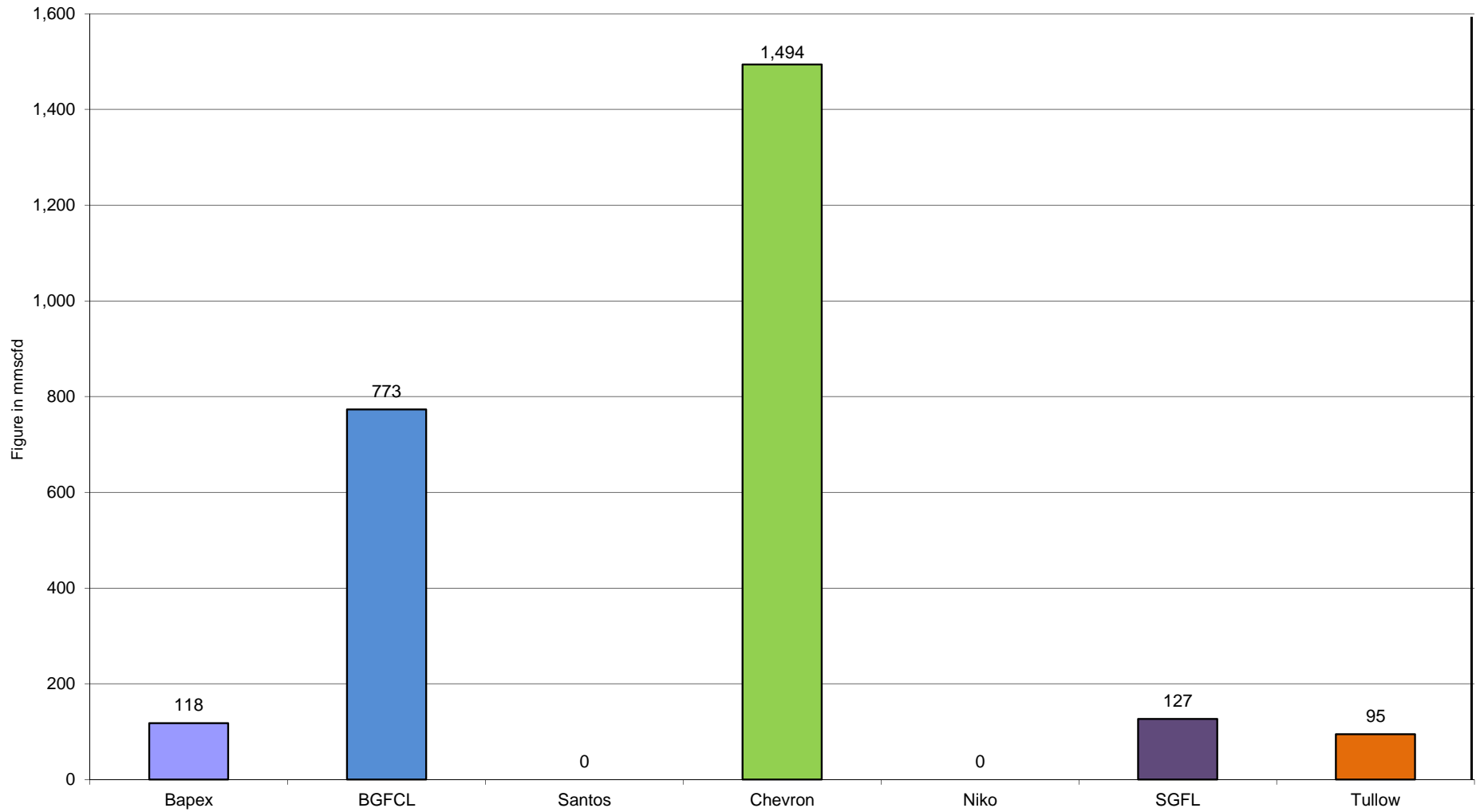
Wellwise Daily Avg. Production- IOC and JVA March 2019



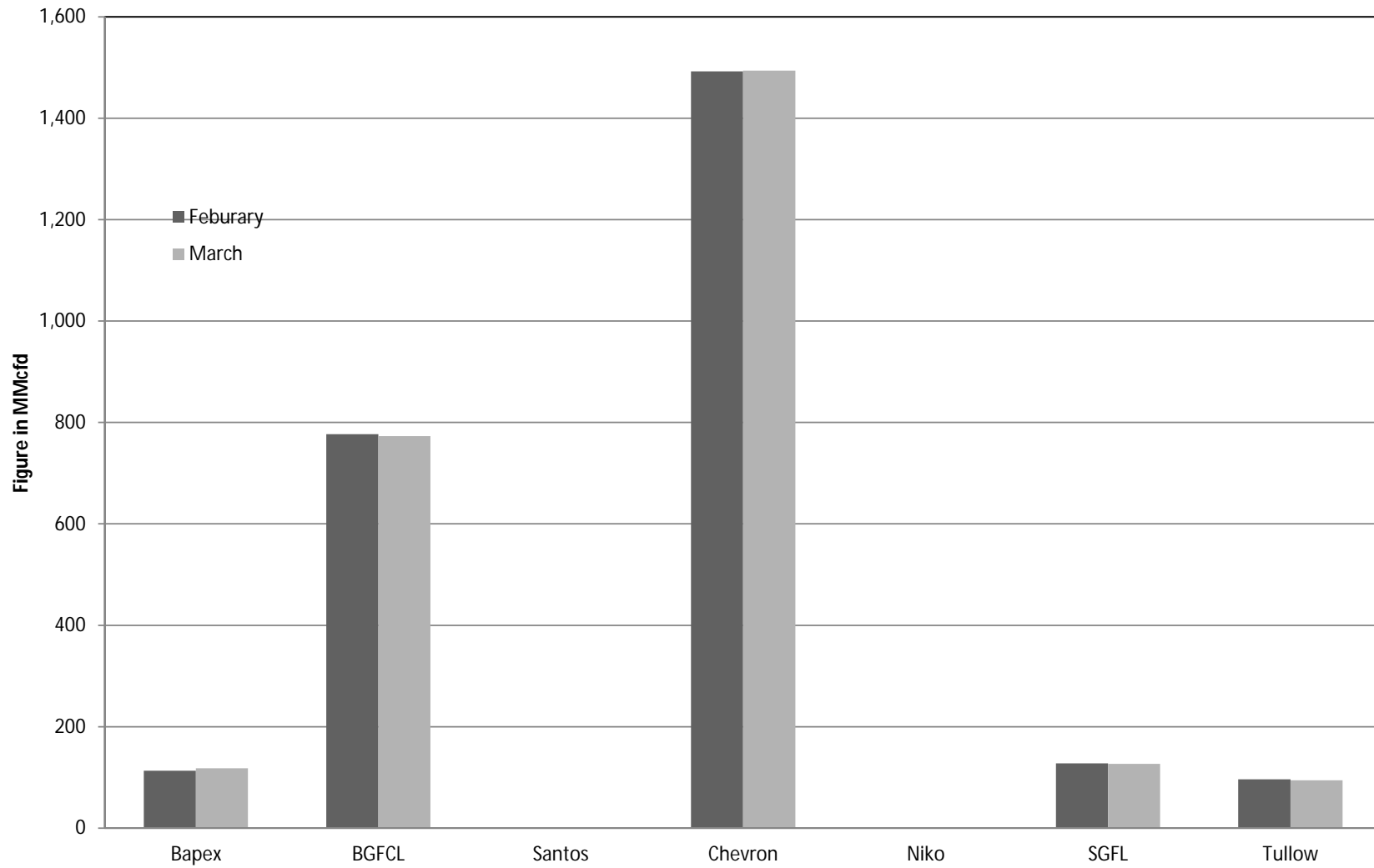
Comparison of fieldwise daily avg. Gas production between February 2019 & March 2019



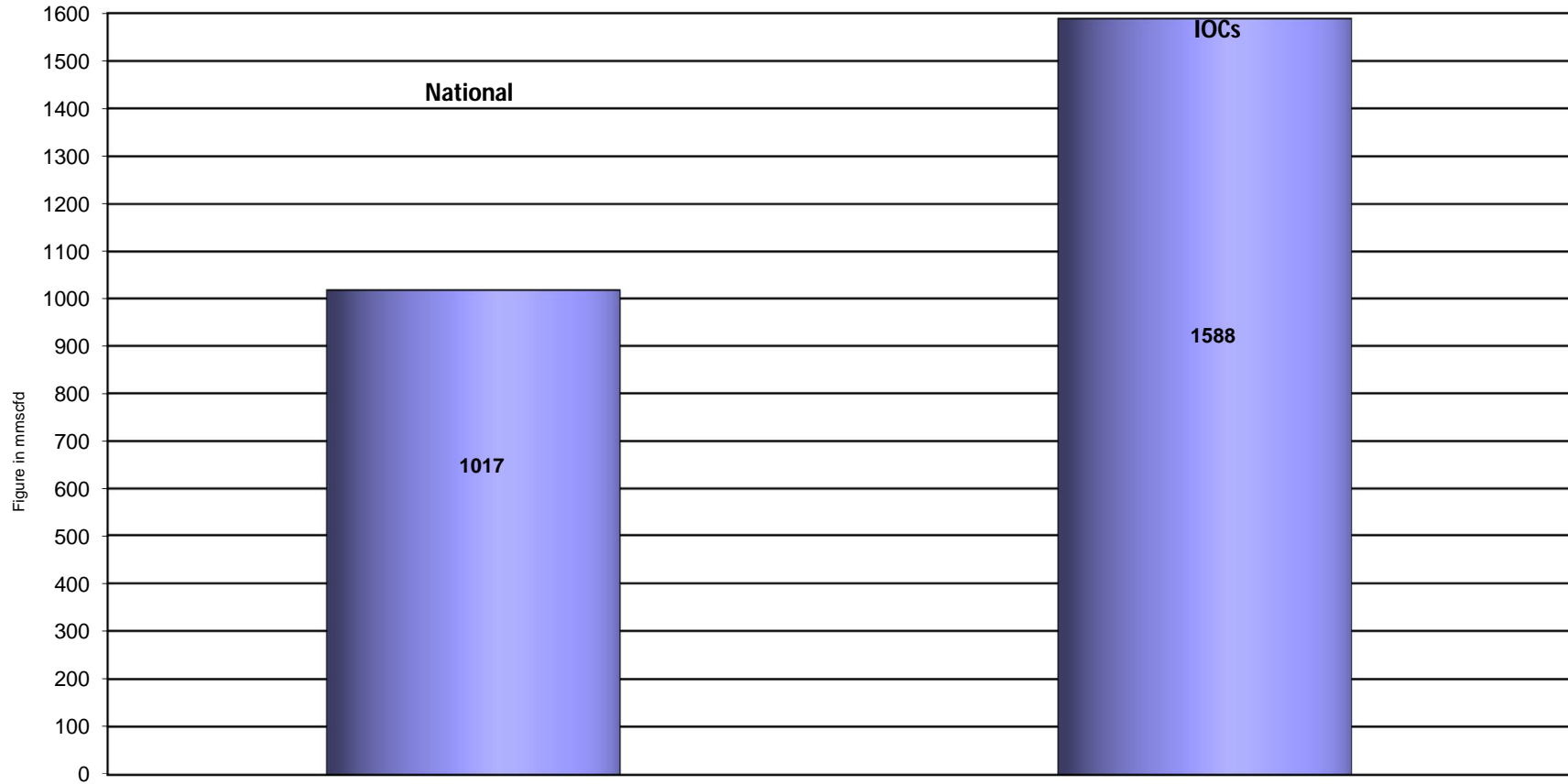
Daily Avg. Production by Operators March 2019



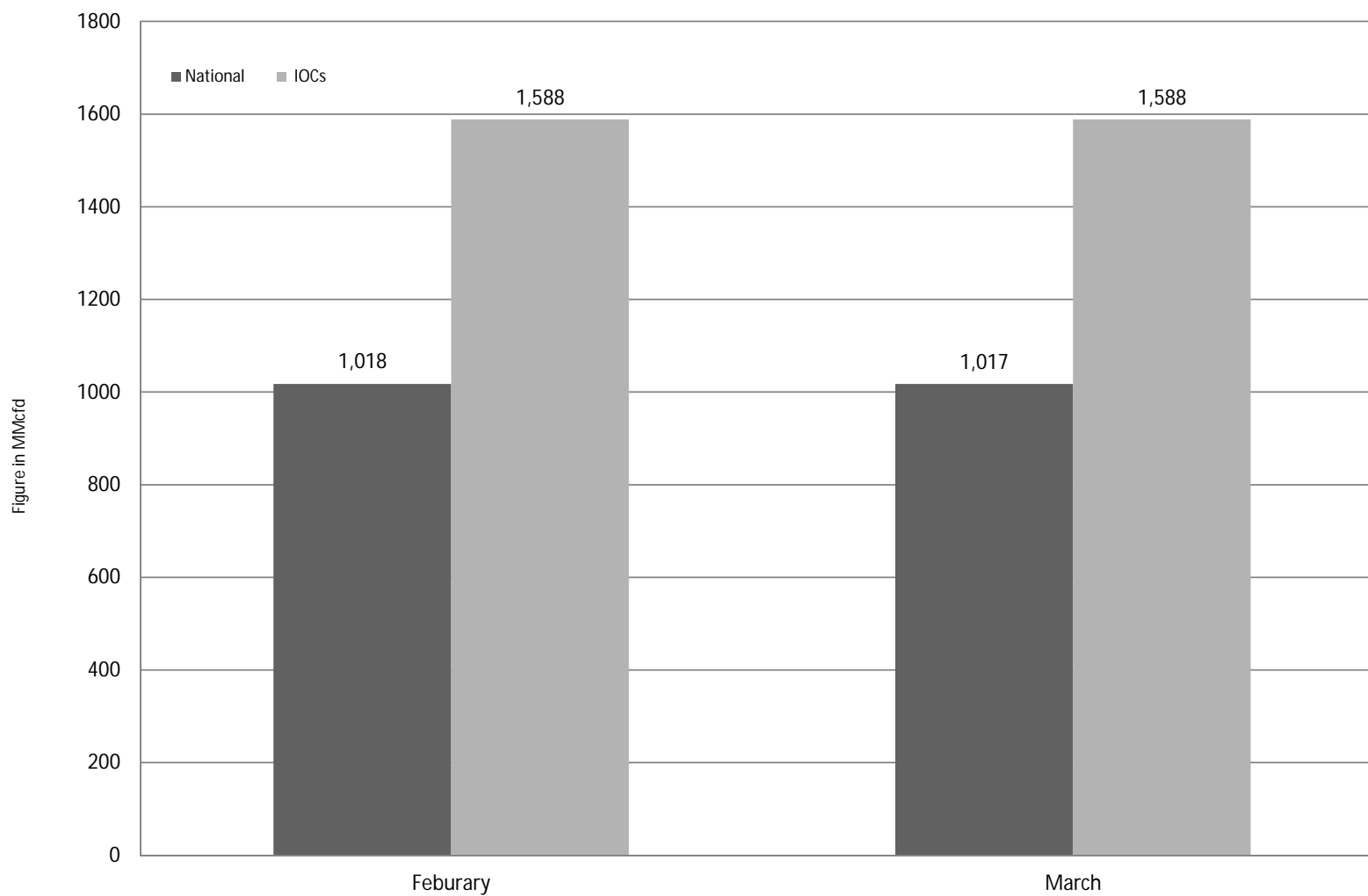
Comparison of operatorwise daily avg. Gas production between February 2019 & March 2019



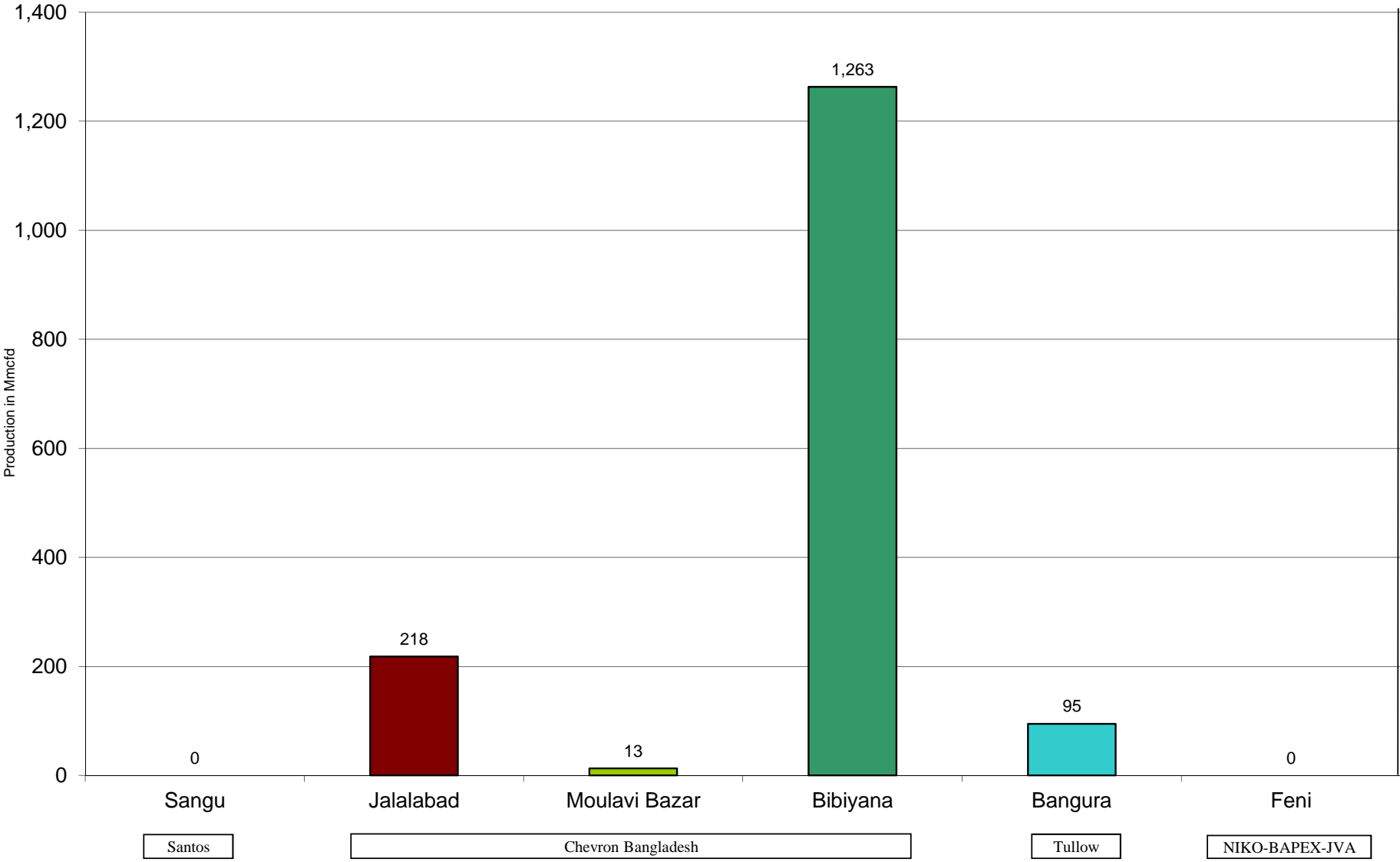
Daily Avg. Production - National Vs. IOCs March 2019



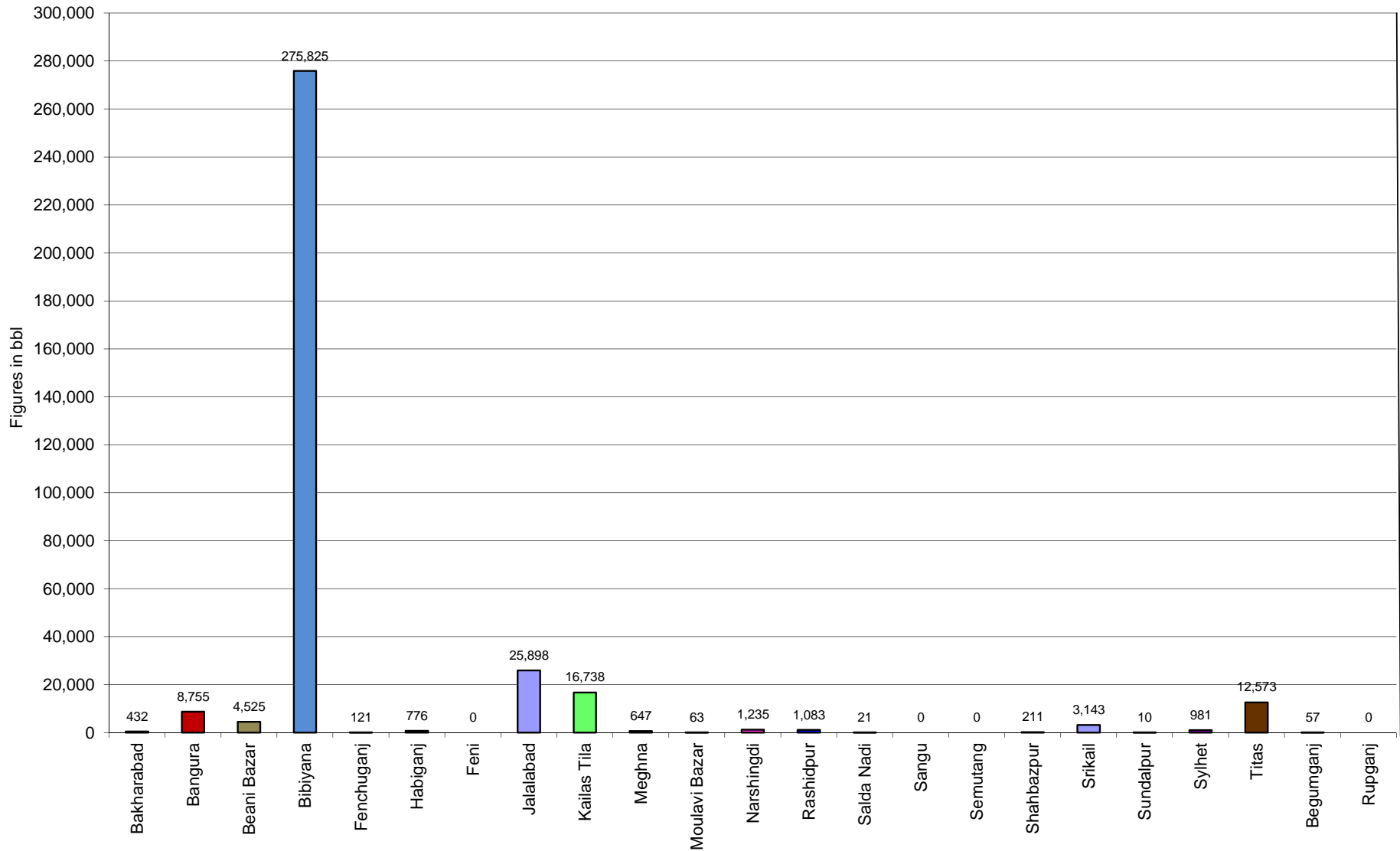
Comparison of daily avg. Gas production - National vs IOC's between February 2019 & March 2019



Daily Avg. Production - IOC and JVA March 2019



Monthly Condensate Production March 2019



Field wise Coal Reserve in Bangladesh

SI No.	Coal Basins	Proved (Mt)	Indicated (Mt)	Inferred (Mt)	Total (Mt)
1	Barapukuria	114.32	211.33	21.06+(43-64)*	346.71+(43-64)*
2	Phulbari	288	226	58	572
3	Khalashpir	-	297.57	225.92	523.49
4	Jamalganj	-	-	1053.9	1053.9
5	Dighipara	-	105	495	600
	Total	402.32	839.9	1896.88-1917.88	3139.10-3160.10

**Resources of VI Seam in second syncline are towards SW of main basin, after Wardell Armstrong*

NOTE: Reserve Figure based on Coal Sector Development Strategy (Final), HCU, PwC

Summary of Reserve and Production of Barapukuria Coal Mine As of 31 March 2019

Coal Initially Place (Proven + Probable)	346,710 kT	346.71 MT
Total Reserve of Seam VI	285,410 kT	285.41 MT
Recoverable from Seam VI Central part(Proven + Probable)	16,540 kT*	16.54 MT
Coal Production in March 2019	97.23 kT	0.10 MT
Cumulative Production as of March 2019	10,423 kT	10.42 MT
Remaining Reserve	6,117 kT	6.12 MT

NOTE: Reserve figure based on Mines and Minerals Development Report ,HCU PwC

*Figure from BCMCL, M/S Wardell Armstrong. According to Mines and Minerals Development Report ,HCU, PwC this figure is 64.8 Mt

Barapukuria Coal Mine-MPM and P Contract (BCMCL)

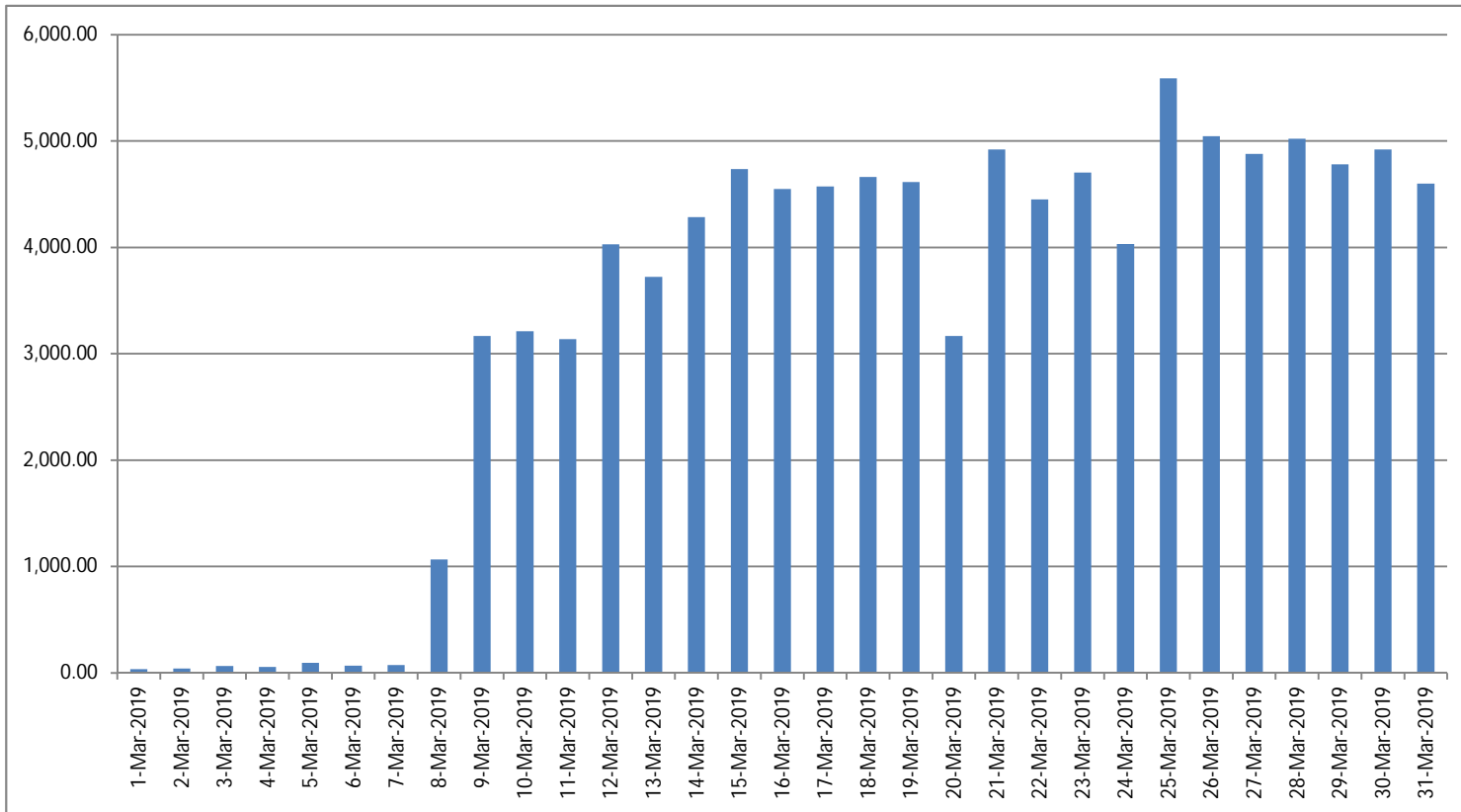
Measurement Record: Surface Belt Weigher

Measurement Period: March 2019

Day wise data	Consortium Daily Output (ton)	Consortium Cumulative Total	BCMCL Daily Output	BCMCL Cumulative Total	Remarks
1-Mar-2019	35.50	35.50	35.50	35.50	
2-Mar-2019	40.50	76.00	40.50	76.00	
3-Mar-2019	63.25	139.25	63.25	139.25	
4-Mar-2019	56.75	196.00	56.75	196.00	
5-Mar-2019	94.50	290.50	94.50	290.50	
6-Mar-2019	67.50	358.00	67.50	358.00	
7-Mar-2019	72.25	430.25	72.25	430.25	
8-Mar-2019	1,066.25	1,496.50	1,066.25	1,496.50	
9-Mar-2019	3,168.50	4,665.00	3,168.50	4,665.00	
10-Mar-2019	3,212.75	7,877.75	3,212.75	7,877.75	
11-Mar-2019	3,138.25	11,016.00	3,138.25	11,016.00	
12-Mar-2019	4,029.00	15,045.00	4,029.00	15,045.00	
13-Mar-2019	3,723.75	18,768.75	3,723.75	18,768.75	
14-Mar-2019	4,283.00	23,051.75	4,283.00	23,051.75	
15-Mar-2019	4,735.25	27,787.00	4,735.25	27,787.00	
16-Mar-2019	4,550.25	32,337.25	4,550.25	32,337.25	
17-Mar-2019	4,573.75	36,911.00	4,573.75	36,911.00	
18-Mar-2019	4,661.50	41,572.50	4,661.50	41,572.50	
19-Mar-2019	4,614.75	46,187.25	4,614.75	46,187.25	
20-Mar-2019	3,165.75	49,353.00	3,165.75	49,353.00	
21-Mar-2019	4,921.00	54,274.00	4,921.00	54,274.00	
22-Mar-2019	4,450.00	58,724.00	4,450.00	58,724.00	
23-Mar-2019	4,704.75	63,428.75	4,704.75	63,428.75	
24-Mar-2019	4,031.75	67,460.50	4,031.75	67,460.50	
25-Mar-2019	5,590.25	73,050.75	5,590.25	73,050.75	
26-Mar-2019	5,043.75	78,094.50	5,043.75	78,094.50	
27-Mar-2019	4,879.50	82,974.00	4,879.50	82,974.00	
28-Mar-2019	5,021.75	87,995.75	5,021.75	87,995.75	
29-Mar-2019	4,782.00	92,777.75	4,782.00	92,777.75	
30-Mar-2019	4,921.25	97,699.00	4,921.25	97,699.00	
31-Mar-2019	4,599.50	102,298.50	4,599.50	102,298.50	

less Difference in Water Content:	4949.35
Less Out of Seam dilution:	115.67
Output (tons) measured by Belt	97,233.48
Tonnes mined in DARR	
Net Output after removing DARR	#VALUE!

Barapukuria Coal Mine Daywise Data Graph for March 2019



আসুন, যানবাহনসমূহকে অটোগ্যাসে রূপান্তর করি...

জাতীয় সম্পদ প্রাকৃতিক গ্যাস সাশ্রয় করি...

facebook

"Energy misused, cannot be excused"

আমাদের ঘরে যদি এখনো কয়েল স্টার্টার যুক্ত টিউবলাইট থেকে থাকে, আসুন আজই LED টিউবলাইট দ্বারা প্রতিস্থাপন করি।

HYDROCARBON UNIT ON FACEBOOK

“আসুন আমাদের জাতীয় সম্পদ প্রাকৃতিক গ্যাস সাশ্রয় করি”

১। **LPG** ব্যবহার করুন..

অবৈধ গ্যাস সংযোগ থেকে বিরত থাকুন

২। **CNG** নয়, অকটেন দিয়ে গাড়ি চালান...

গাড়ির ইঞ্জিনের আয়ুষ্কাল বাড়ান

চলুন আজই যানবাহনসমূহ AUTO GAS (LPG) এ রূপান্তর করি...

- * CNG এর তুলনায় LPG কনভারশনে ৫০% কম খরচ হয়
- * ৩-৫ মিনিটে ট্যাংকে ফুয়েল ভর্তি হয়, লম্বা লাইনে দাঁড়িয়ে অপেক্ষা করার প্রয়োজন পরে না
- * CNG এর তুলনায় সিলিন্ডারে জায়গা, ওজন ও প্রেশার কম দরকার
- * রক্ষণাবেক্ষণের খরচ কম
- * পেট্রলের তুলনায় AUTO GAS -এ খরচ প্রায় ৫০% কম
- * গ্যাসোলিন ও ডিজেলের তুলনায় নিঃসরণ কম

Hydrocarbon Unit

Energy & Mineral Resources Division
Ministry of Power, Energy & Mineral Resources
153, Pioneer Road
Segunbagicha, Dhaka-1000
www.hcuro.gov.bd