

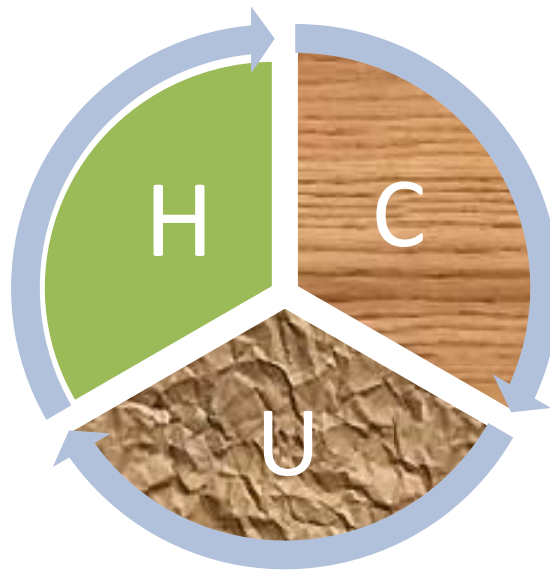


# HYDROCARBON UNIT

Energy and Mineral Resources Division

## Gas and Coal Reserve & Production

March 2020



## Gas Reserve & Production at a glance

Gas Initially in Place (GIIP)	:	40,092.19 Bcf
Recoverable (2P)	:	30,055.40 Bcf
Cumulative Production as of March 2020	:	17,600.10 Bcf
Remaining Reserve up to March 2020	:	12,455.30 Bcf
Gas Production in March 2020	:	74.15 Bcf
National Oil Company (NOC's) production in March 2020	:	27.36Bcf
International Oil Company (IOC's) production in March 2020	:	46.79 Bcf
No. of National Oil Company (NOC's) in March 2020	:	3 (BGFL, BAPEX, SGFL)
No. of International Oil Company (IOC's) in March 2020	:	2 (Chevron, Tullow)
Total gas fields of National Oil Company (NOC) in March 2020	:	21
Total gas fields of International Oil Company (IOC) in March 2020	:	5
Total gas wells of National Oil Company (NOC) in March 2020	:	115
Total gas wells of International Oil Company (IOC) in March 2020	:	60
No. of National Oil Company (NOC's) gas production well in March 2020	:	70
No. of International Oil Company (IOC's) gas production well in March 2020	:	42
No. of National Oil company (NOC's) suspended well in March 2020	:	45
No. of International Oil company (IOC's) suspended well in March 2020	:	18
Total LNG Import in March 2020	:	18.22 Bcf
Cumulative LNG Import till March 2020	:	269.87 Bcf

## Executive Summary of March 2020

Total gas and condensate Production in March 2020 were 74.15 Bcf and 327450.26 Bbl. In the previous month i.e. February 2020, gas and condensate production were 74.54 Bcf and 331357.80 Bbl and in the same month of the previous year i.e. March 2019, total gas and condensate production were 80.78 Bcf and 353092.88 Bbl respectively. The National Oil Companies (NOC's) and International Oil Companies (IOC's) Produced 27.36 Bcf and 46.79 Bcf gas respectively in March 2020. During the previous month i.e. February 2020, gas production by the National Oil Companies (NOC's) and International Oil Companies (IOC's) were 27.66 Bcf and 46.88 Bcf respectively. In the month of March 2020, Bibiyana gas field Produced 38.16 Bcf gas and it ranked top among the gas producers. Average production from the field during the month of March 2020 was 1231 Mmcf. It is noted that Bibiyana gas field Produced 37.60 Bcf in February 2020.

During the month of March 2020 total production of condensate was 327450.26 Bbl compared to 331257.80 Bbl in the previous month i.e. February 2020. Bibiyana gas field Produced 252073 Bbl condensate and ranked top while Jalalabad ranked 2<sup>nd</sup> by producing 30350 Bbl.

In the month of March 2020 total coal production was 83,708.18 Ton. In the previous month i.e. February 2020 total coal production was 111,956.79 Ton. It indicates that 28,248.61 Ton less Coal was produced compared to previous month.

Total LNG import in March 2020 was 18.22 Bcf. As a result, cumulative LNG import stands on 269.87 Bcf till March 2020.

## **Table of Contents**

<b>Gas Report</b>	<b>Page No.</b>
Summary	1
summary of Reserve and Production	2
Production comparison between February 2020 & March 2020	3
Production per well & production reserve ratio	4
Monthly Production by Fields & Wells up to March 2020	5-12
Monthly Condensate Production by Fields up to March 2020	13-14
Monthly Water Production by Fields from March 2020	15-16
Conditions of Field and Well up to March 2020	17-21
<b>Chart</b>	
Well-wise Production of All fields in 2018-19	22
Reserve, Production and Remaining Reserve as of March 2020	23
Daily Average Gas Production from February 2013 to March 2020	24
Field wise Daily Average Production as of March 2020	25
Well wise Daily Average Production-BGFCL as of March 2020	26
Well wise Daily Average Production-BAPEX and SGFL, March 2020	27
Well wise Daily Average Production-IOC and JVA, March 2020	28
Comparison of Field wise Avg Gas Production between February 20 & March 20	29
Daily Average Production by Operator, March 2020	30
Comparison of Operator wise daily avg Production between February 20 & March 20	31
Daily Average Production – National vs IOC's, March 2020	32
Daily avg Gas Production- National vs IOC's between February 20 & March 20	33
Daily Average Production IOC's and JVA, March 2020	34
Monthly Condensate Production, March 2020	35
<b>Coal Report</b>	
Summary	36-37
Barapukuria Coal Mine-MPM and P Contract (BCMCL)	38
Barapukuria Coal Mine Day wise Data Graph for March 2020	39

## Summary of Reserve, Production & Import As of 31 March 2020

<b>Gas Initially Place (Proven + Probable)</b>	<b>40,092.19 Bcf</b>	<b>40.09 Tcf</b>
<b>Recoverable (Proven + Probable)</b>	<b>30,055.40 Bcf</b>	<b>30.06 Tcf</b>
<b>Gas Production in March 2020</b>	<b>74.15 Bcf</b>	<b>0.07 Tcf</b>
<b>Cumulative Gas Production as of March 2020</b>	<b>17,600.10 Bcf</b>	<b>17.60 Tcf</b>
<b>Remaining Reserve</b>	<b>12,455.30 Bcf</b>	<b>12.46 Tcf</b>

*NOTE: Reserve figure based on "Updated Report on Bangladesh Gas Reserve Estimation 2010", prepared by Gustavson Associates LLC, USA*

<b>Total LNG Import in March 2020</b>	<b>18.22 Bcf</b>	<b>0.02 Tcf</b>
<b>Cumulative LNG Import till March 2020</b>	<b>269.87 Bcf</b>	<b>0.27 Tcf</b>

# Summary of Reserve and Production

(As of March 2020)

Gas Bcf



SI No.	Field	2P	GIIP	2P Reserve	Gas Prod. In Mar '20	Cum. Gas Production	Remaining Reserve	Cum. Condensate Production
1	Begumganj		47.0	33.0	0.2	4.1	28.9	1
2	Shahbazpur		415.0	261.0	1.5	60.3	200.7	9
3	Semutang		654.0	318.0	0.0	13.4	304.6	5
4	Fenchuganj		483.0	329.0	0.1	160.6	168.4	116
5	Salda Nadi		393.0	275.0	0.2	93.5	181.5	59
6	Srikail*		230.0	161.0	0.9	96.3	64.7	170
7	Sundalpur *		62.2	50.2	0.2	15.2	35.0	1
8	Rupganj		48.0	33.6	0.0	0.7	32.9	1
<b>Bapex</b>			<b>2,332.2</b>	<b>1,460.8</b>	<b>3.2</b>	<b>444.1</b>	<b>1,016.7</b>	<b>361</b>
9	Meghna		122.0	101.0	0.3	73.2	27.8	116
10	Narshingdi		405.0	345.0	0.8	211.8	133.2	435
11	Kamta		72.0	50.0	0.0	21.1	28.9	4
12	Habiganj		3,981.0	2,787.0	5.7	2,517.7	269.3	139
13	Bakhrabad		1,825.0	1,387.0	1.3	829.3	557.7	1,033
14	Titas		9,039.0	7,582.0	12.2	4,863.6	2,718.4	5,400
<b>BGFCL</b>			<b>15,444.0</b>	<b>12,252.0</b>	<b>20.3</b>	<b>8,516.8</b>	<b>3,735.2</b>	<b>7,127</b>
15	Sangu		976.0	771.0	0.0	489.5	281.5	37
<b>Santos/Cairn</b>			<b>976.0</b>	<b>771.0</b>	<b>0.0</b>	<b>489.5</b>	<b>281.5</b>	<b>37</b>
16	Bibiyana**		8,383.0	4,532.0	38.2	4,168.2	363.8	25,018
17	Moulavi Bazar**		494.0	494.0	0.4	329.7	164.3	118
18	Jalalabad**		2,716.0	2,716.0	5.9	1,375.2	1,340.8	10,553
<b>Chevron</b>			<b>11,593.0</b>	<b>7,742.0</b>	<b>44.5</b>	<b>5,873.0</b>	<b>1,869.0</b>	<b>35,690</b>
19	Feni		185.0	130.0	0.0	63.0	67.0	110
<b>Niko</b>			<b>185.0</b>	<b>129.6</b>		<b>63.0</b>	<b>66.6</b>	<b>110</b>
20	Kailas Tila		3,463.0	2,880.0	1.6	753.4	2,126.6	8,004
21	Sylhet		580.0	408.0	0.1	216.0	192.0	808
22	Rashidpur		3,887.0	3,134.0	1.5	649.9	2,484.1	796
23	Chattak		677.0	474.0	0.0	25.8	448.2	4
24	Beani Bazar		225.0	137.0	0.3	99.1	37.9	1,630
<b>SGFL</b>			<b>8,832.0</b>	<b>7,033.0</b>	<b>3.5</b>	<b>1,744.3</b>	<b>5,288.7</b>	<b>11,242</b>
25	Bangura		730.0	621.0	2.7	469.4	151.6	1,196
<b>Tullow</b>			<b>730.0</b>	<b>621.0</b>	<b>2.7</b>	<b>469.4</b>	<b>151.6</b>	<b>1,196</b>
26	Kutubdia		65.0	46.0	0.0	0.0	46.0	0
<b>Total</b>			<b>40,092.2</b>	<b>30,055.4</b>	<b>74.15</b>	<b>17,600.1</b>	<b>12,455.3</b>	<b>55,764</b>

\* Preliminary reserve estimated by BAPEX

\*\* 2P reserve estimation by Petrobangla has crossed the limit. So 2P reserve is estimated as GIIP reserve now.

## Production comparison between February'20 & March'20



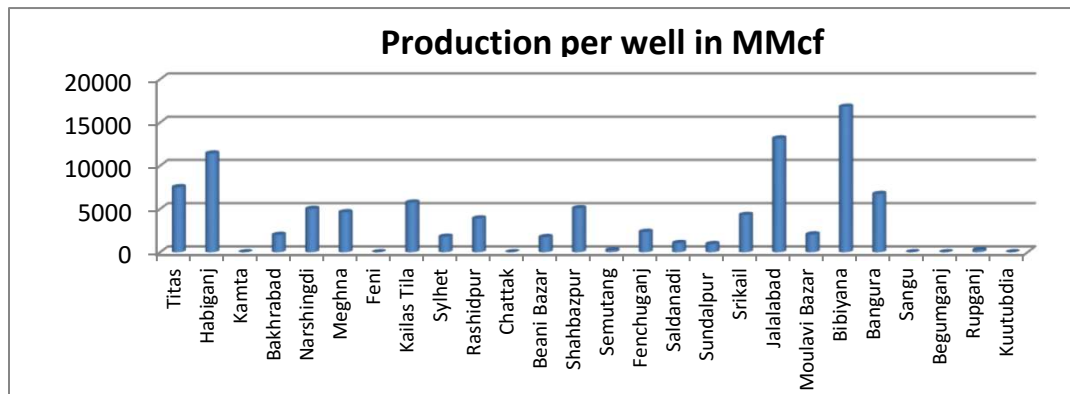
SI No.	Field	Gas Prod. (MMcf) in Feb'20	Daily Avg. (MMcfd) in Feb'20	Gas Prod. (MMcf) in Mar'20	Daily Avg. (MMcfd) in Mar'20
1	Begumganj	162	6	169	5
2	Shahbazpur	1113	38	1514	49
3	Semutang	26	1	28	1
4	Fenchuganj	102	4	101	3
5	Salda Nadi	216	7	222	7
6	Srikail	914	32	923	30
7	Sundalpur	207	7	222	7
8	Rupganj	0	0	0	0
<b>Bapex</b>		<b>2739</b>	<b>94</b>	<b>3178</b>	<b>103</b>
9	Meghna	250	9	262	8
10	Narshingdi	790	27	803	26
11	Kamta	0	0	0	0
12	Habiganj	5521	190	5727	185
13	Bakhrabad	1200	41	1263	41
14	Titas	13255	457	12205	394
<b>BGFCL</b>		<b>21016</b>	<b>725</b>	<b>20260</b>	<b>654</b>
15	Sangu	0	0	0	0
<b>Santos/Cairn</b>		<b>0</b>	<b>0</b>	<b>0</b>	<b>0</b>
16	Bibiyana	37602	1297	38162	1231
17	Moulavi Bazar	575	20	439	14
18	Jalalabad	6352	219	5896	190
<b>Chevron</b>		<b>44530</b>	<b>1536</b>	<b>44497</b>	<b>1435</b>
19	Feni	0	0	0	0
<b>Niko</b>		<b>0</b>	<b>0</b>	<b>0</b>	<b>0</b>
20	Kailas Tila	1578	54	1630	53
21	Sylhet	109	4	117	4
22	Rashidpur	1397	48	1484	48
23	Chattak	0	0	0	0
24	Beani Bazar	244	8	254	8
<b>SGFL</b>		<b>3328</b>	<b>115</b>	<b>3485</b>	<b>112</b>
25	Bangura	2924	101	2728	88
<b>Tullow</b>		<b>2924</b>	<b>101</b>	<b>2728</b>	<b>88</b>
26	Kutubdia	0	0	0	0
<b>Total</b>		<b>74537</b>	<b>2570</b>	<b>74147</b>	<b>2392</b>

## Production per well & production reserve ratio



**HYDROCARBON UNIT**  
Energy & Mineral Resources Division

	No of production well	Total 2p- Recoverable	2018-19 production	production per well mmcf	production reserve ratio
Titas	26	7582	183.36	7052.31	0.024
Habiganj	8	2787	79.21	9901.25	0.028
Kamta	0	50	0	0.00	0.000
Bakhrabad	7	1387	11	1571.43	0.008
Narshingdi	2	345	9.95	4975.00	0.029
Meghna	1	101	4.12	4120.00	0.041
Feni	0	130	0	0.00	0.000
Kailas Tila	4	2880	22.87	5717.50	0.008
Sylhet	1	408	1.5	1500.00	0.004
Rashidpur	5	3134	18.6	3720.00	0.006
Chattak	0	474	0	0.00	0.000
Beani Bazar	1	137	3.21	3210.00	0.023
Shahbazpur	4	261	20.35	5087.50	0.078
Semutang	2	318	0.28	140.00	0.001
Fenchuganj	2	329	3.41	1705.00	0.010
Saldanadi	2	275	1.56	780.00	0.006
Sundalpur	1	50.2	2.52	2520.00	0.050
Srikail	3	161	12.45	4150.00	0.077
Jalalabad	7	1346	84.14	12020.00	0.063
Moulavi Bazar	4	494	7.87	1967.50	0.016
Bibiyana	26	4532	463.74	17836.15	0.102
Bangura	5	621	32.89	6578.00	0.053
Sangu	0	771	0	0.00	0.000
Begumganj	1	33	1.71	0.00	0.052
Rupganj	0	33.6	0	0.00	0.000
Kuutubdia	0	46	0	0.00	0.000
<b>Total</b>	<b>112</b>	<b>28685.8</b>	<b>964.74</b>	<b>8613.75</b>	<b>0.034</b>





## Monthly Production by Field and Well upto March- 2020



**HYDROCARBON UNIT**  
Energy & Mineral Resources Division

Figures in mmscf

Well	Jan	Feb	Mar	Apr	May	Jun	Jul	Aug	Sep	Oct	Nov	Dec	Total	Cumulative	2019	2018	2017
<b>Field : Bakharabad</b>																	
BKB-1	432	401	427										1,259	145,721	3,295	0	0
BKB-2	27	13	23										63	87,012	378	445	543
BKB-3	143	139	144										426	163,029	1,757	1,989	2,249
BKB-4	0	0	0										0	55,872	0		
BKB-5	146	137	146										428	60,996	1,757	1,822	1,847
BKB-6	0	0	0										0	50,069	0	0	
BKB-7	0	0	0										0	107,750	0	0	0
BKB-8	238	228	234										699	129,525	2,565	2,017	3,462
BKB-9	208	194	201										603	24,310	2,585	3,332	3,637
BKB-10	91	88	90										269	5,036	1,092	1,297	1,453
<b>Field Total:</b>	<b>1,285</b>	<b>1,200</b>	<b>1,263</b>	<b>0</b>	<b>0</b>	<b>0</b>	<b>0</b>	<b>0</b>	<b>0</b>	<b>0</b>	<b>0</b>	<b>0</b>	<b>3,748</b>	<b>829,318</b>	<b>13,429</b>	<b>10,903</b>	<b>13,190</b>
<b>Daily Avg.(mmscfd)</b>	41	41	41	0	0	0	0	0	0	0	0	0	62		37	30	36
<b>Field : Bangura</b>																	
Bangura-1	331	306	281										918	94,310	4,138	4,615	4,914
Bangura-2	431	398	335										1,163	86,013	5,312	6,802	7,837
Bangura-3	517	478	373										1,368	104,290	6,195	7,265	8,662
Bangura-6	295	268	169										731	13,196	3,518	4,847	4,100
Bangura-5	1,584	1,475	1,570										4,629	171,549	16,177	8,410	9,699
<b>Field Total:</b>	<b>3,158</b>	<b>2,924</b>	<b>2,728</b>	<b>0</b>	<b>0</b>	<b>0</b>	<b>0</b>	<b>0</b>	<b>0</b>	<b>0</b>	<b>0</b>	<b>0</b>	<b>8,810</b>	<b>469,358</b>	<b>35,340</b>	<b>31,940</b>	<b>35,212</b>
<b>Daily Avg.(mmscfd)</b>	102	101	88	0	0	0	0	0	0	0	0	0	147		97	88	96
<b>Field : Beani Bazar</b>																	
BB-1	0	0	0	0	0	0	0	0	0	0	0	0	0	35,481	0	0	1,023
BB-2	251	244	254										750	63,621	3,135	3,276	3,282
<b>Field Total:</b>	<b>251</b>	<b>244</b>	<b>254</b>	<b>0</b>	<b>0</b>	<b>0</b>	<b>0</b>	<b>0</b>	<b>0</b>	<b>0</b>	<b>0</b>	<b>0</b>	<b>750</b>	<b>99,101</b>	<b>3,135</b>	<b>3,276</b>	<b>4,306</b>
<b>Daily Avg.(mmscfd)</b>	8	8	8	0	0	0	0	0	0	0	0	0	12		9	9	12
<b>Field : Bibiyana</b>																	
BY-1	3,116	2,351	2,124										7,590	404,930	29,455	21,743	35,595
BY-2	1,633	1,245	1,219										4,097	295,986	17,462	21,388	23,957
BY-3	973	1,026	897										2,897	242,727	4,562	6,249	9,904
BY-4	2,693	1,966	2,002										6,662	211,993	24,793	28,559	6,571
BY-5	35	471	474										980	179,115	6,168	6,131	8,117
BY-6	781	672	786										2,239	232,875	9,140	11,057	11,879
BY-7	2,530	1,866	1,736										6,132	277,297	26,581	23,155	32,874
BY-8	192	700	730										1,622	144,403	8,538	8,921	12,486
BY-9	43	384	346										774	130,556	5,164	4,093	6,247

## Monthly Production by Field and Well upto March- 2020



**HYDROCARBON UNIT**  
Energy & Mineral Resources Division

Figures in mmscf

Well	Jan	Feb	Mar	Apr	May	Jun	Jul	Aug	Sep	Oct	Nov	Dec	Total	Cumulative	2019	2018	2017
BY-10	130	1,839	1,841										3,811	361,805	22,997	30,954	32,967
BY-11	149	2,068	1,878										4,094	133,039	8,983	12,147	6,813
BY-12	134	1,797	1,921										3,853	150,955	24,399	6,835	8,284
BY-13	1,058	1,685	1,587										4,330	88,074	10,785	13,171	11,842
BY-14	869	629	635										2,133	101,738	8,991	11,523	15,354
BY-15	2,110	1,566	1,575										5,251	124,097	21,925	24,295	19,111
BY-16	994	726	782										2,502	73,820	10,246	9,264	12,541
BY-17	1,782	1,309	1,429										4,520	100,995	18,604	17,603	15,412
BY-18	2,743	1,895	2,266										6,905	154,716	30,009	31,890	29,509
BY-19	2,536	2,006	1,725										6,267	65,552	27,207	8,144	9,859
BY-20	2,388	1,846	1,952										6,186	66,731	22,699	7,840	6,533
BY-21	2,260	1,692	1,652										5,604	49,406	8,577	9,670	13,246
BY-22	1,889	1,391	1,507										4,787	132,078	19,492	24,755	27,093
BY-23	2,487	1,833	1,860										6,180	83,545	25,318	32,043	15,333
BY-24	1,042	766	837										2,644	71,077	10,269	13,268	13,484
BY-25	2,581	1,856	2,045										6,482	138,459	26,797	28,306	30,331
BY-26	2,896	2,018	2,352										7,266	152,260	29,429	33,853	30,446
<b>Field Total:</b>	<b>40045</b>	<b>37602</b>	<b>38162</b>	<b>0</b>	<b>0</b>	<b>0</b>	<b>0</b>	<b>0</b>	<b>0</b>	<b>0</b>	<b>0</b>	<b>0</b>	<b>115,809</b>	<b>4,168,226</b>	<b>458,589</b>	<b>446,855</b>	<b>445,787</b>
<b>Daily Avg.(mmscfd)</b>	1292	1,297	1231	0	0	0	0	0	0	0	0	0	1,930		1,256	1,224	1,221
<b>Field :</b>	<b>Chattak</b>																
Ch-1	Production Suspended													25,834			
<b>Field Total:</b>	<b>0</b>			<b>0</b>	<b>0</b>	<b>0</b>	<b>0</b>	<b>0</b>	<b>0</b>	<b>0</b>	<b>0</b>	<b>0</b>	<b>25,834</b>				
<b>Daily Avg.(mmscfd)</b>	0			0	0			0	0			0	0	0			
<b>Field :</b>	<b>Fenchuganj</b>																
Fenchuganj-2	0	0	0	0	0	0	0	0	0	0	0	0	0	38,169	0	0	0
Fenchuganj-3	101	102	101										304	92,819	1,877	3,186	6,192
Fenchuganj-4	3	0	0										3	29,582	305	809	441
<b>Field Total:</b>	<b>105</b>	<b>102</b>	<b>101</b>	<b>0</b>	<b>0</b>	<b>0</b>	<b>0</b>	<b>0</b>	<b>0</b>	<b>0</b>	<b>0</b>	<b>0</b>	<b>307</b>	<b>160,570</b>	<b>2,182</b>	<b>3,994</b>	<b>6,633</b>
<b>Daily Avg.(mmscfd)</b>	3	4	3	0	0	0	0	0	0	0	0	0	5		6	11	18
<b>Field :</b>	<b>Feni</b>																
Feni-1	Production Suspended								0	0	0	34,214					
Feni-2	Production Suspended								0	0	0	6,119					
Feni-3	Production Suspended								0	0	0	2,176					

## Monthly Production by Field and Well upto March- 2020



**HYDROCARBON UNIT**  
Energy & Mineral Resources Division

Figures in mmscf

Well	Jan	Feb	Mar	Apr	May	Jun	Jul	Aug	Sep	Oct	Nov	Dec	Total	Cumulative	2019	2018	2017
Feni-4	Production Suspended								0	0				14,386			
Feni-5	Production Suspended								0	0				6,127			
<b>Field Total:</b>													<b>63,023</b>				
<b>Daily Avg.(mmscfd)</b>																	
<b>Field :</b>	<b>Habiganj</b>																
Hbj-1	301	292	311										904	283,136	4,124	2,207	0
Hbj-2	0	0	0										0	275,704	0	0	0
Hbj-3	870	813	848										2,531	390,635	10,947	13,155	13,151
Hbj-4	870	813	848										2,531	385,093	10,947	13,155	13,151
Hbj-5	752	725	750										2,227	308,878	8,977	9,497	9,497
Hbj-6	451	432	446										1,329	168,887	5,349	5,487	5,491
Hbj-7	1,185	1,108	1,142										3,435	270,826	14,272	14,533	14,565
Hbj-8	0	0	0										0	11,023	0	0	0
Hbj-9	0	0	0										0	52,652	0	0	0
Hbj-10	852	815	841.5										2,508	266,064	10,423	13,928	14,058
Hbj-11	549	524	540										1,613	104,841	6,920	9,579	10,398
<b>Field Total:</b>	<b>5,830</b>	<b>5,521</b>	<b>5,727</b>	<b>0</b>	<b>0</b>	<b>0</b>	<b>0</b>	<b>0</b>	<b>0</b>	<b>0</b>	<b>0</b>	<b>0</b>	<b>17,078</b>	<b>2,517,738</b>	<b>71,959</b>	<b>81,540</b>	<b>80,313</b>
<b>Daily Avg.(mmscfd)</b>	188	190	185	0	0	0	0	0	0	0	0	0	285		197	223	220
<b>Field :</b>	<b>Jalalabad</b>																
JB-1	795	710	696										2,200	257,160	9,191	10,469	9,142
JB-2	987	881	864										2,731	293,727	11,400	12,973	14,517
JB-3	1,315	1,174	1,152										3,641	359,429	15,263	17,399	19,162
JB-4	658	584	576										1,817	285,583	4,766	5,821	7,045
JB-6	1,315	1,174	1,059										3,549	77,895	15,021	17,364	19,524
JB-7	978	881	683										2,542	43,328	11,396	13,053	10,324
JB-8	1,063	949	867										2,879	58,037	11,228	12,793	14,513
<b>Field Total:</b>	<b>7,111</b>	<b>6,352</b>	<b>5,896</b>	<b>0</b>	<b>0</b>	<b>0</b>	<b>0</b>	<b>0</b>	<b>0</b>	<b>0</b>	<b>0</b>	<b>0</b>	<b>19,359</b>	<b>1,375,158</b>	<b>78,265</b>	<b>89,872</b>	<b>94,226</b>
<b>Daily Avg.(mmscfd)</b>	229	219	190	0	0	0	0	0	0	0	0	0	323		214	246	258
<b>Field :</b>	<b>Kailas Tila</b>																
KTL-1	0	0	0										0	205,181	371	462	0

## Monthly Production by Field and Well upto March- 2020



**HYDROCARBON UNIT**

Energy & Mineral Resources Division

Figures in mmscf

Well	Jan	Feb	Mar	Apr	May	Jun	Jul	Aug	Sep	Oct	Nov	Dec	Total	Cumulative	2019	2018	2017
KTL-2	587	555	608										1,751	187,063	7,166	7,190	7,242
KTL-3	134	101	34										269	140,672	2,583	2,947	3,255
KTL-4	189	178	189										555	99,289	2,639	3,336	3,680
KTL-5	0	0	0										0	17,923	0	0	0
KTL-6	781	744	798										2,323	102,454	9,042	8,950	9,086
KTL-7	0	0	0										0	816	0	0	0
Field Total:	1,691	1,578	1,630	0	0	0	0	0	0	0	0	0	4,898	753,398	21,801	22,886	23,263
Daily Avg.(mmscfd)	55	54	53	0	0	0	0	0	0	0	0	0	82		60	63	64
<b>Field : Kamta</b>																	
Kamta-1	Production Suspended												21,139				
Field Total:			0	0	0	0	0	0	0	0	0	0		21,139			
Daily Avg.(mmscfd)																	
<b>Field : Meghna</b>																	
M-1	257	250	262										770	73,201	3,458	4,538	4,625
Field Total:	257	250	262	0	0	0	0	0	0	0	0	0	770	73,201	3,458	4,538	4,625
Daily Avg.(mmscfd)	8	9	8	0	0	0	0	0	0	0	0	0	13		9	12	13
<b>Field : Moulavi Bazar</b>																	
MV Bazar-2	125	115	85										326	55,134	770	2,302	2,866
MV Bazar-3	426	357	256										1,039	160,869	2,022	3,712	4,705
MV Bazar-4	36	0	0										36	59,150	1,047	3,103	3,945
MV Bazar-5	0	0	0											66			
MV Bazar-6	20	103	98										221	18,456	1,886	1,734	1,676
MV Bazar-7	0	0	0										0	5,648	4	21	152
MV Bazar-9	0	0	0										0	30,337	1	1	0
Field Total:	607	575	439	0	0	0	0	0	0	0	0	0	1,621	329,659	5,730	10,872	13,345
Daily Avg.(mmscfd)	20	20	14	0	0	0	0	0	0	0	0	0	27		16	30	37
<b>Field : Narshingdi</b>																	
N-1	504	482	495										1,482	151,740	5,663	6,181	6,279
N-2	323	308	308										939	60,041	3,732	3,705	3,962
Field Total:	828	790	803	0	0	0	0	0	0	0	0	0	2,421	211,780	9,395	9,886	10,241

## Monthly Production by Field and Well upto March- 2020



**HYDROCARBON UNIT**  
Energy & Mineral Resources Division

Figures in mmscf

Well	Jan	Feb	Mar	Apr	May	Jun	Jul	Aug	Sep	Oct	Nov	Dec	Total	Cumulative	2019	2018	2017
<b>Daily Avg.(mmscfd)</b>	27	27	26	0	0	0	0	0	0	0	0	0	40		26	27	28
<b>Field : Rashidpur</b>																	
RP-1	531	510	546										1,587	174,955	6,305	6,505	6,625
RP-2	0	0	0										0	82,474	0		
RP-3	284	265	283										832	135,483	3,443	3,541	3,730
RP-4	241	224	235										700	131,481	2,886	3,227	3,516
RP-5	0	0	0										0	25,647	0		
RP-6	0	0	0										0	9,983	0	0	0
RP-7	145	134	141										420	66,532	1,786	2,096	2,225
RP-8	283	264	279										825	23,373	3,515	3,696	3,977
<b>Field Total:</b>	<b>1,483</b>	<b>1,397</b>	<b>1,484</b>	<b>0</b>	<b>0</b>	<b>0</b>	<b>0</b>	<b>0</b>	<b>0</b>	<b>0</b>	<b>0</b>	<b>0</b>	<b>4,364</b>	<b>649,928</b>	<b>17,936</b>	<b>19,065</b>	<b>20,074</b>
<b>Daily Avg.(mmscfd)</b>	48	48	48	0	0	0	0	0	0	0	0	0	73		49	52	55
<b>Field : Salda Nadi</b>																	
Salda-1	0	0	0	0	0	0	0	0	0	0	0	0	0	36,904	0	0	0
Salda-2	0	0	0	0	0	0	0	0	0	0	0	0	0	28,495	0	0	0
Salda-3	177	206	211										594	27,984	1,809	1,067	1,514
Salda-4	0	10	10										20	166	29	70	14
<b>Field Total:</b>	<b>177</b>	<b>216</b>	<b>222</b>	<b>0</b>	<b>0</b>	<b>0</b>	<b>0</b>	<b>0</b>	<b>0</b>	<b>0</b>	<b>0</b>	<b>0</b>	<b>614</b>	<b>93,549</b>	<b>1,838</b>	<b>1,137</b>	<b>1,527</b>
<b>Daily Avg.(mmscfd)</b>	6	7	7	0	0	0	0	0	0	0	0	0	10		5	3	4
<b>Field : Sangu</b>																	
Sangu-1	0	0	0	0	0	0	0	0	0	0	0	0	0	116,191	0	0	0
Sangu-3z	0	0	0	0	0	0	0	0	0	0	0	0	0	131,796	0	0	0
Sangu-4	0	0	0	0	0	0	0	0	0	0	0	0	0	87,280			
Sangu-5	0	0	0	0	0	0	0	0	0	0	0	0	0	61,674			
Sangu-7	0	0	0	0	0	0	0	0	0	0	0	0	0	18,202			
Sangu-8	0	0	0	0	0	0	0	0	0	0	0	0	0	37,619			
Sangu-9	0	0	0	0	0	0	0	0	0	0	0	0	0	30,638	0	0	0
Sangu-10	Production Suspended						0	0	0	0	0	0	0				
Sangu-11	0	0	0	0	0	0	0	0	0	0	0	0	0	6,067	0	0	0
<b>Field Total:</b>	<b>0</b>	<b>0</b>	<b>0</b>	<b>0</b>	<b>0</b>	<b>0</b>	<b>0</b>	<b>0</b>	<b>0</b>	<b>0</b>	<b>0</b>	<b>0</b>	<b>0</b>	<b>489,467</b>	<b>0</b>	<b>0</b>	<b>0</b>

## Monthly Production by Field and Well upto March- 2020



**HYDROCARBON UNIT**  
Energy & Mineral Resources Division

Figures in mmscf

Well	Jan	Feb	Mar	Apr	May	Jun	Jul	Aug	Sep	Oct	Nov	Dec	Total	Cumulative	2019	2018	2017
<b>Daily Avg.(mmscfd)</b>	0	0	0	0	0	0	0	0	0	0	0	0	0		0	0	0
<b>Field :</b>	<b>Semutang</b>																
Semutang-5	12	10	11										33	12,238	140	291	471
Semutang-6	17	16	17										49	1,166	161	84	66
<b>Field Total:</b>	<b>29</b>	<b>26</b>	<b>28</b>	<b>0</b>	<b>0</b>	<b>0</b>	<b>0</b>	<b>0</b>	<b>0</b>	<b>0</b>	<b>0</b>	<b>0</b>	<b>82</b>	<b>13,404</b>	<b>301</b>	<b>375</b>	<b>537</b>
<b>Daily Avg.(mmscfd)</b>	1	1	1	0	0	0	0	0	0	0	0	0	1		1	1	1
<b>Field :</b>	<b>Shahbazpur</b>																
Shahbazpur-1	230	0	0										230	22,462	874	134	4,835
Shahbazpur-2	4	178	424										606	17,884	6,196	6,650	4,243
Shahbazpur-3	626	592	635										1,853		6,668	5,222	1,162
Shahbazpur-4	355	342	455										1,153	19,920	5,764	6,936	1,801
<b>Field Total:</b>	<b>1,216</b>	<b>1,113</b>	<b>1,514</b>	<b>0</b>	<b>0</b>	<b>0</b>	<b>0</b>	<b>0</b>	<b>0</b>	<b>0</b>	<b>0</b>	<b>0</b>	<b>3,842</b>	<b>60,266</b>	<b>19,501</b>	<b>18,943</b>	<b>12,041</b>
<b>Daily Avg.(mmscfd)</b>	39	38	49	0	0	0	0	0	0	0	0	0	64		53	52	33
<b>Field</b>	<b>Srikail</b>																
Srikail-2	426	387	400										1,213	44,444	5,288	5,154	5,384
Srikail-3	319	301	298										919	39,738	3,988	4,273	4,944
Srikail-4	236	226	225										687	12,158	3,026	2,971	3,439
<b>Field Total:</b>	<b>981</b>	<b>914</b>	<b>923</b>	<b>0</b>	<b>0</b>	<b>0</b>	<b>0</b>	<b>0</b>	<b>0</b>	<b>0</b>	<b>0</b>	<b>0</b>	<b>2,818</b>	<b>96,340</b>	<b>12,301</b>	<b>12,398</b>	<b>13,767</b>
<b>Daily Avg.(mmscfd)</b>	32	32	30	0	0	0	0	0	0	0	0	0	47		34	34	38
<b>Field :</b>	<b>Sundalpur</b>																
Sundalpur -1	0	0	0		0	0	0	0	0	0	0	0	0	9,809	0	0	0
Sundalpur -2	223	207	222										651	5,400	2,572	2,176	0
<b>Field Total:</b>	<b>223</b>	<b>207</b>	<b>222</b>	<b>0</b>	<b>0</b>	<b>0</b>	<b>0</b>	<b>0</b>	<b>0</b>	<b>0</b>	<b>0</b>	<b>0</b>	<b>651</b>	<b>15,209</b>	<b>2,572</b>	<b>2,176</b>	<b>0</b>
<b>Daily Avg.(mmscfd)</b>	7	7	7	0	0	0	0	0	0	0	0	0	11		7	6	0
<b>Field :</b>	<b>Sylhet</b>																
Sylhet-3	Production Suspended													89,032			
Sylhet-6	Production Suspended													91,748			
Sylhet-7	114	109	117										341	28,705	1,373	1,622	2,061
Surma-1	0	0	0	0	0	0	0	0	0	0	0	0	0	6,528	0	0	249

## Monthly Production by Field and Well upto March- 2020



**HYDROCARBON UNIT**

Energy & Mineral Resources Division

Figures in mmscf

Well	Jan	Feb	Mar	Apr	May	Jun	Jul	Aug	Sep	Oct	Nov	Dec	Total	Cumulative	2019	2018	2017
<b>Field Total:</b>	<b>114</b>	<b>109</b>	<b>117</b>	<b>0</b>	<b>0</b>	<b>0</b>	<b>0</b>	<b>0</b>	<b>0</b>	<b>0</b>	<b>0</b>	<b>0</b>	<b>341</b>	<b>216,012</b>	<b>1,373</b>	<b>1,622</b>	<b>2,309</b>
<b>Daily Avg.(mmscfd)</b>	4	4	4	0	0	0	0	0	0	0	0	0	6		4	4	6
<b>Field :</b>	<b>Titas</b>																
Titas-1	548	510	505										1,563	447,840	6,648	8,516	7,897
Titas-2	912	848	786										2,546	448,928	10,877	11,522	11,506
Titas-3	0		0										0	314,888	0	0	
Titas-4	906	837	804										2,547	384,011	11,013	11,726	11,798
Titas-5	1,003	926	743										2,672	442,644	11,720	11,838	11,869
Titas-6	881	821	777										2,479	375,220	9,613	12,030	12,029
Titas-7	854	814	117										1,784	356,893	10,244	11,919	11,707
Titas-8	525	454	451										1,430	279,916	5,851	6,154	6,889
Titas-9	6	468	504										978	283,668	6,200	6,706	8,246
Titas-10	671	624	646										1,941	208,811	7,869	7,612	7,431
Titas-11	844	781	778										2,403	258,137	8,834	9,998	10,276
Titas-12	468	440	454										1,361	107,375	5,239	5,160	5,168
Titas-13	0	0	0										0	194,541	4,449	6,952	7,879
Titas-14	509	474	479										1,462	157,517	6,070	7,203	8,309
Titas-15	406	376	393										1,175	145,667	4,978	5,543	7,973
Titas-16	590	555	543										1,688	155,242	7,209	8,605	10,060
Titas-17	493	455	392										1,340	46,637	5,794	6,335	7,011
Titas-18	521	485	420										1,426	45,545	6,113	6,664	7,168
Titas-19	469	437	426										1,332	34,973	5,592	6,115	6,106
Titas-20	311	293	308										912	23,329	3,589	3,914	3,635
Titas-21	254	243	254										751	13,019	3,036	2,995	2,800
Titas-22	220	206	222										647	28,198	3,133	4,158	4,336
Titas-27	495	464	392										1,351	35,792	5,602	5,827	6,136
Titas-23	462	426	460										1,347	16,431	5,079	5,594	4,410
Titas-24	147	141	144										432	8,213	2,789	2,709	2,283
Titas-25	471	440	456										1,366	20,004	6,424	6,324	5,622
Titas-26	792	740	751										2,283	30,176	8,628	9,672	9,210
<b>Field Total:</b>	<b>13,757</b>	<b>13,255</b>	<b>12,205</b>	<b>0</b>	<b>0</b>	<b>0</b>	<b>0</b>	<b>0</b>	<b>0</b>	<b>0</b>	<b>0</b>	<b>0</b>	<b>39,216</b>	<b>4,863,614</b>	<b>172,591</b>	<b>191,792</b>	<b>197,756</b>
<b>Daily Avg.(mmscfd)</b>	444	457	394	0	0	0	0	0	0	0	0	0	654		473	525	542

## Monthly Production by Field and Well upto March- 2020



**HYDROCARBON UNIT**  
Energy & Mineral Resources Division

Figures in mmscf

Well	Jan	Feb	Mar	Apr	May	Jun	Jul	Aug	Sep	Oct	Nov	Dec	Total	Cumulative	2019	2018	2017
<b>Field : Begumganj</b>																	
Begumganj-3	173	162	169										504	4,123	2,150	593	0
<b>Field Total:</b>	<b>173</b>	<b>162</b>	<b>169</b>	<b>0</b>	<b>0</b>	<b>0</b>	<b>0</b>	<b>0</b>	<b>0</b>	<b>0</b>	<b>0</b>	<b>0</b>	<b>504</b>	<b>4,123</b>	<b>2,150</b>	<b>593</b>	<b>0</b>
Daily Avg.(mmscfd)	6	6	5	0	0	0	0	0	0	0	0	0	8		6	2	0
<b>Field : Rupganj</b>																	
Rupganj-1	0	0	0										0	679	0	0	679
<b>Field Total:</b>	<b>0</b>	<b>0</b>	<b>0</b>	<b>0</b>	<b>0</b>	<b>0</b>	<b>0</b>	<b>0</b>	<b>0</b>	<b>0</b>	<b>0</b>	<b>0</b>	<b>0</b>	<b>679</b>	<b>0</b>	<b>0</b>	<b>679</b>
Daily Avg.(mmscfd)	0	0	0	0	0	0	0	0	0	0	0	0	0		0	0	2
<b>Grand Total (in Bcf)</b>	<b>79.32</b>	<b>74.54</b>	<b>74.15</b>	<b>0.00</b>	<b>0.00</b>	<b>0.00</b>	<b>0</b>	<b>0.00</b>	<b>0.00</b>	<b>0.00</b>	<b>0.00</b>	<b>0.00</b>	<b>228.0</b>	<b>17,600.10</b>	<b>933.8</b>	<b>964.7</b>	<b>979.8</b>
<b>Daily Avg.(mmscfd)</b>	<b>2,559</b>	<b>2,570</b>	<b>2,392</b>	<b>0</b>	<b>0</b>	<b>0</b>	<b>0</b>	<b>0</b>	<b>0</b>	<b>0</b>	<b>0</b>	<b>0</b>	<b>3,800</b>		<b>2,558</b>	<b>2,643</b>	<b>2,684</b>



## Monthly Condensate Production by Fields upto March 2020



Field Name	Jan-20	Feb-20	Mar-20	Apr-20	May-20	Jun-20	Jul-20	Aug-20	Sep-20	Oct-20	Nov-20	Dec-20	Total Cumulative 000' bbl	2019	2018	2017	
Bakhrabad	1,884	1,750	1,589										5,223	1,033	8,201	5,022	6,173
Daily Avg.	61	60	51	0	0	0	0	0	0	0	0	0	87	22	14	17	
Bangura	9,402	9,091	8,299										26,792	1,196	104,034	94,737	103,198
Daily Avg.	303	313	268	0	0	0	0	0	0	0	0	0	447	285	260	283	
Beani Bazar	4,054	3,913	4,033										12,000	1,630	50,497	51,187	68,202
Daily Avg.	131	135	130	0	0	0	0	27	0	0	0	0	200	138	140	187	
Bibiyana	264,088	253,166	252,073										769,327	25,018	3,094,275	3,267,318	3,283,757
Daily Avg.	8,519	8,730	8,131	0	0	0	0	0	0	0	0	0	12,822	8,477	8,952	8,997	
Chattak	0	0	0	0	0	0	0	0	0	0	0	0	0	4	0	0	0
Daily Avg.	0	0	0	0	0	0	0	0	0	0	0	0	0	0	0	0	0
Fenchuganj	35	41	36										112	116	738	1,625	2,462
Daily Avg.	1	1	1	0	0	0	0	0	0	0	0	0	2	2	4	7	
Feni	0	0	0	0	0	0	0	0	0	0	0	0	0	110	0	0	0
Daily Avg.	0	0	0	0	0	0	0	0	0	0	0	0	0	0	0	0	0
Habiganj	531	542	568										1,641	139	7,233	5,612	3,955
Daily Avg.	17	19	18	0	0	0	0	0	0	0	0	0	27	20	15	11	
Jalalabad	34,240	31,441	30,350										96,032	10,553	318,424	367,160	437,070
Daily Avg.	1,105	1,084	979	0	0	0	0	0	0	0	0	0	1,601	872	1,006	1,197	
Kailas Tila	12,599	12,646	13,590										38,835	8,004	170,713	189,620	203,979
Daily Avg.	406	436	438	0	0	0	0	0	0	0	0	0	647	468	520	559	
Kamta	Production Suspended										0	0	4				
Daily Avg.											0	0	0	0	0	0	
Meghna	575	529	606										1,710	116	7,098	7,947	7,741
Daily Avg.	19	18	20	0	0	0	0	0	0	0	0	0	29	19	22	21	
Moulavi Bazar	194	113	70										377	118	745	856	1,128
Daily Avg.	6	4	2	0	0	0	0	0	0	0	0	0	6	2	2	3	

## Monthly Condensate Production by Fields upto March 2020



Field Name	Jan-20	Feb-20	Mar-20	Apr-20	May-20	Jun-20	Jul-20	Aug-20	Sep-20	Oct-20	Nov-20	Dec-20	Total Cumulative 000' bbl	2019	2018	2017	
Narshingdi	1,269	1,165	1,170										3,604	435	14,029	15,797	16,656
Daily Avg.	41	40	38	0	0	0	0	0	0	0	0	0	60		38	43	46
Rashidpur	1,472	1,367	1,471										4,310	796	16,268	14,393	10,723
Daily Avg.	47	47	47	0	0	0	0	0	0	0	0	0	72		45	39	29
Saldanadi	24	20	24										68	59	302	137	225
Daily Avg.	1	1	1	0	0	0	0	0	0	0	0	0	1		1	0	1
Sangu	0	0	0	0	0	0	0	0	0	0	0	0	0	37	0	0	0
Daily Avg.	0	0	0	0	0	0	0	0	0	0	0	0	0		0	0	0
Semutang	0	0	0										0	5	4	26	99
Daily Avg.	0	0	0	0	0	0	0	0	0	0	0	0	0		0	0	0
Shahbazpur	120	131	180										431	9	2,034	2,488	1,791
Daily Avg.	4	5	6	0	0	0	0	0	0	0	0	0	7		6	7	5
Srikail	2,591	2,685	2,720										7,996	170	34,193	33,765	37,879
Daily Avg.	84	93	88	0	0	0	0	0	0	0	0	0	133		94	93	104
Sundalpur	12	9	14										36	1	172	121	0
Daily Avg.	0	0	0	0	0	0	0	0	0	0	0	0	1		0	0	0
Sylhet	900	901	897										2,698	808	9,691	10,277	15,593
Daily Avg.	29	31	29	0	0	0	0	0	0	0	0	0	45		27	28	43
Titas	12,479	11,693	9,703										33,875	5,400	141,979	159,803	154,262
Daily Avg.	403	403	313	0	0	0	0	0	0	0	0	0	565		389	438	423
Begumganj	63	53	57										172	1	711	201	0
Daily Avg.	2	0	0	0	0	0	0	0	0	0	0	0	3		2	1	0
Rupganj	0	0	0	0	0	0	0	0	0	0	0	0	0	1	0	0	1,133
Daily Avg.	0	0	0	0	0	0	0	0	0	0	0	0	0		0	0	3
<b>Total (000'bbl)</b>	<b>347</b>	<b>331</b>	<b>327</b>	<b>0</b>	<b>0</b>	<b>0</b>	<b>0</b>	<b>0</b>	<b>0</b>	<b>0</b>	<b>0</b>	<b>0</b>	<b>1,005</b>	<b>55,764</b>	<b>3,981</b>	<b>4,228</b>	<b>4,356</b>
<b>Daily Avg. (000'bbl)</b>	<b>11.2</b>	<b>11.4</b>	<b>10.6</b>	<b>0.0</b>	<b>0.0</b>	<b>0</b>	<b>0.0</b>	<b>0.0</b>	<b>0.0</b>	<b>0.0</b>	<b>0</b>	<b>0</b>	<b>17</b>		<b>10.9</b>	<b>11.6</b>	<b>11.9</b>

Note: Historical condensate figure of Sangu available from 2006. Sylhet available from August 1964

## Monthly Water Production by Fields in March 2020



**HYDROCARBON UNIT**  
Energy & Mineral Resources Division

Field Name	Jan-20	Feb-20	Mar-20	Apr-20	May-20	Jun-20	Jul-20	Aug-20	Sep-20	Oct-20	Nov-20	Dec-20	Total	2019	2018
Bakhrabad	2,447	2,122	2,440										7,009	25,025	28,218
Daily Avg.	79	73	79	0	0	0	0	0	0	0	0	0	117	69	77
Bangura	3,530	3,282	3,009										9,821	38,297	43,917
Daily Avg.	114	113	97	0	0	0	0	0	0	0	0	0	164	105	120
Beani Bazar	12,271	12,741	14,234										39,246	130,468	109,854
Daily Avg.	396	439	459	0	0	0	0	0	0	0	0	0	654	357	301
Bibiyana	16,735	15,786	16,483										49,004	194,287	194,651
Daily Avg.	540	544	532	0	0	0	0	0	0	0	0	0	817	532	533
Chattak	0	0	0	0	0	0	0	0	0	0	0	0			
Daily Avg.	0	0	0	0	0	0	0	0	0	0	0	0	0	0	0
Fenchuganj	1,743	1,881	1,573										5,196	34,864	74,969
Daily Avg.	56	65	51	0	0	0	0	0	0	0	0	0	87	96	205
Feni	0	0	0	0	0	0	0	0	0	0	0	0	0	0	0
Daily Avg.	0	0	0	0	0	0	0	0	0	0	0	0	0	0	0
Habiganj	849	943	1,031										2,823	12,931	39,104
Daily Avg.	27	33	33	0	0	0	0	0	0	0	0	0	47	35	107
Jalalabad	9,322	8,854	7,003										25,179	57,962	55,950
Daily Avg.	301	305	226	0	0	0	0	0	0	0	0	0	420	159	153
Kailas Tila	17,780	19,550	10,126										47,456	68,693	43,233
Daily Avg.	574	674	327	0	0	0	0	0	0	0	0	0	791	188	118
Kamta	0	0	0	0	0	0	0	0	0	0	0	0			
Daily Avg.	0	0	0	0	0	0	0	0	0	0	0	0	0	0	0
Meghna	1,105	1,074	1,212										3,391	8,048	2,014
Daily Avg.	36	37	39	0	0	0	0	0	0	0	0	0	57	22	6
Moulavi Baza	423	283	160										866	5,447	13,965
Daily Avg.	14	10	5	0	0	0	0	0	0	0	0	0	14	15	38
Narshingdi	915	855	861										2,631	10,069	10,374
Daily Avg.	30	29	28	0	0	0	0	0	0	0	0	0	44	28	28
Rashidpur	13,644	12,554	13,120										39,318	158,452	137,406
Daily Avg.	440	433	423	0	0	0	0	0	0	0	0	0	655	434	376
Saldanadi	136	129	137										402	1,570	813
Daily Avg.	4	4	4	0	0	0	0	0	0	0	0	0	7	4	2

## Monthly Water Production by Fields in March 2020



**HYDROCARBON UNIT**  
Energy & Mineral Resources Division

Field Name	Jan-20	Feb-20	Mar-20	Apr-20	May-20	Jun-20	Jul-20	Aug-20	Sep-20	Oct-20	Nov-20	Dec-20	Total	2019	
Sangu	0	0	0	0	0	0	0	0	0	0	0	0	0	0	0
Daily Avg.	0	0	0	0	0	0	0	0	0	0	0	0	0	0	0
Semutang	146	127	152										426	966	3,002
Daily Avg.	5	4	5	0	0	0	0	0	0	0	0	0	7	3	8
Shahbazpur	1,491	1,361	1,855										4,707	23,785	22,110
Daily Avg.	48	47	60	0	0	0	0	0	0	0	0	0	78	65	61
Srikail	1,606	1,511	1,526										4,643	19,783	18,432
Daily Avg.	52	52	49	0	0	0	0	0	0	0	0	0	77	54	50
Sundalpur	33	29	32										94	354	219
Daily Avg.	1	1	1	0	0	0	0	0	0	0	0	0	2	1	1
Sylhet	5,906	9,948	10,396										26,250	39,488	20,362
Daily Avg.	191	343	335	0	0	0	0	0	0	0	0	0	438	108	56
Titas	26,186	24,901	25,603										76,690	517,843	556,608
Daily Avg.	845	859	826	0	0	0	0	0	0	0	0	0	1,278	1,419	1,525
Begumganj	67	63	62										192	738	207
Daily Avg.	2	2	2	0	0	0	0	0	0	0	0	0	3	2	1
Rupganj	0	0	0	0	0	0	0	0	0	0	0	0	0	0	0
Daily Avg.	0	0	0	0	0	0	0	0	0	0	0	0	0	0	0
<b>Total (000'bl</b>	<b>116,336</b>	<b>117,993</b>	<b>111,015</b>	<b>0</b>	<b>0</b>	<b>0</b>	<b>0</b>	<b>0</b>	<b>0</b>	<b>0</b>	<b>0</b>	<b>0</b>	<b>345,345</b>	<b>1,349,070</b>	<b>1,375,408</b>
<b>Daily Avg. (000'bbl)</b>	<b>3,753</b>	<b>4,069</b>	<b>3,581</b>	<b>0</b>	<b>0</b>	<b>0</b>	<b>0</b>	<b>0</b>	<b>0</b>	<b>0</b>	<b>0</b>	<b>0</b>	<b>5,756</b>	<b>3,696</b>	<b>3,768</b>

## Conditions of Field and Well upto March 2020



Well	company	well type	Discovery	production start	Drilled depth (ft)	Pressure	Pressure type	Completion Zone
<b>Field : Bakharabad</b>								
BKB-1	BGFCL	Vertical	1969	June,1969	9309		FWHP	J
BKB-2	BGFCL	Directional	1969	October,1981	7496	248-274	FWHP	G
BKB-3	BGFCL	Directional	1969	April,1982	9339	356-412	FWHP	G
BKB-4	BGFCL	Directional	1969	June,1982	9430			D
BKB-5	BGFCL	Directional	1969	Sept,1982	9675	1555-1646	FWHP	B
BKB-6	BGFCL	Directional	1969	March,1989	8785			J
BKB-7	BGFCL	Directional	1969	July,1989	8605		FWHP	J
BKB-8	BGFCL	Directional	1969	Sept,1989	8840	490-523	FWHP	J
BKB-9	BGFCL	Vertical	1969	August,2013	8318	1005-1097	FWHP	G
BKB-10	BGFCL	Directional	1969	June,2016	9291	1010-1102	FWHP	K
<b>Field : Bangura</b>								
Bangura-1	Tullow		2004			887-940	FWHP	D
Bangura-2	Tullow		2004			587-685	FWHP	D/E
Bangura-3	Tullow		2004			719-789	FWHP	D
Bangura-6	Tullow		2004			708-780	FWHP	D
Bangura-5	Tullow		2004			579-621	FWHP	D
<b>Field : Beani Bazar</b>								
BB-1	SGFL		1981	July,1999	13480	580-620	SIWHP	Upper
BB-2	SGFL		1981	July,1999	12048	3210-3220	FWHP	Upper
<b>Field : Bibiyana</b>								
BY-1	Chevron		1998			1547-2007	FWHP	BB60, BB66
BY-2	Chevron		1998			1313-1390	FWHP	BB60, BH20A, BH20E
BY-3	Chevron		1998			1363-1403	FWHP	BB70
BY-4	Chevron		1998			1330-1390	FWHP	BH10
BY-5	Chevron		1998			1254-1299	FWHP	BH20A, BH20B, BH20C, BH20D
BY-6	Chevron		1998			1250-1486	FWHP	BB70
BY-7	Chevron		1998			1454-1566	FWHP	BH10
BY-8	Chevron		1998			1270-1297	FWHP	BH20A, BH20B
BY-9	Chevron		1998			1243-1273	FWHP	BH10
BY-10	Chevron		1998			1465-1533	FWHP	BB60
BY-11	Chevron		1998			1260-1284	FWHP	BH20A, BH20B
BY-12	Chevron		1998			1259-1332	FWHP	BB70
BY-13	Chevron		1998			1300-1356	FWHP	BH20A, BH20B
BY-14	Chevron		1998			1342-1632	FWHP	BH20A, BH20B
BY-15	Chevron		1998			2189-2240	FWHP	BB60
BY-16	Chevron		1998			1381-1644	FWHP	BH10, BH20D

## Conditions of Field and Well upto March 2020



Well	company	well type	Discovery	production start	Drilled depth (ft)	Pressure	Pressure type	Completion Zone
BY-17	<i>Chevron</i>		<i>1998</i>			<i>2104-2229</i>	<i>FWHP</i>	<i>BB60</i>
BY-18	<i>Chevron</i>		<i>1998</i>			<i>1904-2218</i>	<i>FWHP</i>	<i>BB60</i>
BY-19	<i>Chevron</i>		<i>1998</i>			<i>1354-1477</i>	<i>FWHP</i>	<i>BH10, BH20A</i>
BY-20	<i>Chevron</i>		<i>1998</i>			<i>1248-1262</i>	<i>FWHP</i>	<i>BH20D, BH20A, BH10</i>
BY-21	<i>Chevron</i>		<i>1998</i>			<i>1333-1348</i>	<i>FWHP</i>	<i>BH20A, BH20B, BH10</i>
BY-22	<i>Chevron</i>		<i>1998</i>			<i>1552-1586</i>	<i>FWHP</i>	<i>BB60</i>
BY-23	<i>Chevron</i>		<i>1998</i>			<i>1739-2021</i>	<i>FWHP</i>	<i>BH10, BH20A, BH20B, BH20C</i>
BY-24	<i>Chevron</i>		<i>1998</i>			<i>1337-2091</i>	<i>FWHP</i>	<i>BB60</i>
BY-25	<i>Chevron</i>		<i>1998</i>			<i>1728-1857</i>	<i>FWHP</i>	<i>BB60, BB66</i>
BY-26	<i>Chevron</i>		<i>1998</i>			<i>1877-2094</i>	<i>FWHP</i>	<i>BB60, BB64</i>
<b>Field : Chattak</b>								
Ch-1	SGFL		1959					
<b>Field : Fenchuganj</b>								
Fenchuganj-2	<i>BAPEX</i>		<i>1988</i>	<i>May, 2004</i>				
Fenchuganj-3	<i>BAPEX</i>		<i>1988</i>	<i>February, 2005</i>		<i>2004-2010</i>		<i>upper</i>
Fenchuganj-4	<i>BAPEX</i>		<i>1988</i>			<i>2037-2065</i>		
<b>Field : Feni</b>								
Feni-1	<i>BAPEX</i>		<i>1981</i>					
Feni-2	<i>BAPEX</i>		<i>1981</i>					
Feni-3	<i>BAPEX</i>		<i>1981</i>					
Feni-4	<i>BAPEX</i>		<i>1981</i>					
Feni-5	<i>BAPEX</i>		<i>1981</i>					
<b>Field : Habiganj</b>								
Hbj-1	<i>BGFCL</i>	<i>Vertical</i>	<i>1963</i>	<i>Feb, 1969</i>	<i>11500</i>		<i>FWHP</i>	<i>upper</i>
Hbj-2	<i>BGFCL</i>	<i>Vertical</i>	<i>1963</i>	<i>Feb, 1969</i>	<i>5100</i>		<i>FWHP</i>	<i>upper</i>
Hbj-3	<i>BGFCL</i>	<i>Vertical</i>	<i>1963</i>	<i>July, 1985</i>	<i>5282</i>	<i>1478-1486</i>	<i>FWHP</i>	<i>upper</i>
Hbj-4	<i>BGFCL</i>	<i>Vertical</i>	<i>1963</i>	<i>May, 1985</i>	<i>5249</i>	<i>1460-1467</i>	<i>FWHP</i>	<i>upper</i>
Hbj-5	<i>BGFCL</i>	<i>Directional</i>	<i>1963</i>	<i>Feb, 1992</i>	<i>11552</i>	<i>1440-1446</i>	<i>FWHP</i>	<i>upper</i>
Hbj-6	<i>BGFCL</i>	<i>Vertical</i>	<i>1963</i>	<i>Feb, 1992</i>	<i>5515</i>	<i>1375-1379</i>	<i>FWHP</i>	<i>upper</i>
Hbj-7	<i>BGFCL</i>	<i>Vertical</i>	<i>1963</i>	<i>April, 2000</i>	<i>10236</i>	<i>1331-1139</i>	<i>FWHP</i>	<i>upper</i>
Hbj-8	<i>BGFCL</i>	<i>Vertical</i>	<i>1963</i>	<i>May, 2000</i>	<i>5280</i>			<i>upper</i>
Hbj-9	<i>BGFCL</i>	<i>Vertical</i>	<i>1963</i>	<i>July, 1998</i>	<i>5249</i>			<i>upper</i>
Hbj-10	<i>BGFCL</i>	<i>Vertical</i>	<i>1963</i>	<i>Apr, 2000</i>	<i>5133</i>	<i>1322-1331</i>	<i>FWHP</i>	<i>upper</i>
Hbj-11	<i>BGFCL</i>	<i>Vertical</i>	<i>1963</i>	<i>February, 2008</i>	<i>10499</i>	<i>1417-1423</i>	<i>FWHP</i>	<i>upper</i>
<b>Field : Jalalabad</b>								
JB-1	<i>Chevron</i>		<i>1989</i>			<i>1333-1436</i>	<i>FWHP</i>	<i>BB60, BB50</i>

## Conditions of Field and Well upto March 2020



Well	company	well type	Discovery	production start	Drilled depth (ft)	Pressure	Pressure type	Completion Zone
JB-2	<i>Chevron</i>		<i>1989</i>			<i>1279-1294</i>	<i>FWHP</i>	<i>BB50, BB60</i>
JB-3	<i>Chevron</i>		<i>1989</i>			<i>1332-1375</i>	<i>FWHP</i>	<i>BB50, BB60</i>
JB-4	<i>Chevron</i>		<i>1989</i>			<i>1365-1425</i>	<i>FWHP</i>	<i>BB60</i>
JB-6	<i>Chevron</i>		<i>1989</i>			<i>1354-1362</i>	<i>FWHP</i>	<i>BB60, BB50</i>
JB-7	<i>Chevron</i>		<i>1989</i>			<i>1666-1679</i>	<i>FWHP</i>	<i>BB20</i>
JB-8	<i>Chevron</i>		<i>1989</i>			<i>1362-1370</i>	<i>FWHP</i>	<i>BB50, BB60</i>
<b>Field : Kailas Tila</b>								
KTL-1	<i>SGFL</i>		<i>1962</i>	<i>June, 1983</i>	<i>12417</i>	<i>0</i>	<i>SIWHP</i>	
KTL-2	<i>SGFL</i>		<i>1962</i>	<i>Feb, 1995</i>		<i>2225-2230</i>	<i>FWHP</i>	
KTL-3	<i>SGFL</i>		<i>1962</i>	<i>March, 1995</i>		<i>2470-2495</i>	<i>FWHP</i>	
KTL-4	<i>SGFL</i>		<i>1962</i>	<i>March, 1997</i>		<i>2360-2410</i>	<i>FWHP</i>	
KTL-5	<i>SGFL</i>		<i>1962</i>	<i>Sep, 2006</i>		<i>0</i>	<i>SIWHP</i>	
KTL-6	<i>SGFL</i>		<i>1962</i>	<i>Aug, 2007</i>		<i>2490-2495</i>	<i>FWHP</i>	
KTL-7	<i>SGFL</i>		<i>1962</i>			<i>0</i>	<i>SIWHP</i>	
<b>Field : Kamta</b>								
Kamta-1	<i>BGFCL</i>	<i>Vertical</i>	<i>1981</i>	<i>july,1982</i>	<i>11857</i>			<i>N/A</i>
<b>Field : Meghna</b>								
M-1	<i>BGFCL</i>	<i>Vertical</i>	<i>2004</i>	<i>july,1990</i>	<i>10069</i>	<i>1400-1450</i>	<i>FWHP</i>	<i>A,E,F &amp; G</i>
<b>Field : Moulavi Bazar</b>								
MV Bazar-2	<i>Chevron</i>		<i>1997</i>			<i>800-820</i>	<i>FWHP</i>	<i>BB70</i>
MV Bazar-3	<i>Chevron</i>		<i>1997</i>			<i>800-820</i>	<i>FWHP</i>	<i>BB70</i>
MV Bazar-4	<i>Chevron</i>		<i>1997</i>			<i>946-952</i>	<i>FWHP</i>	<i>BB20</i>
MV Bazar-5	<i>Chevron</i>		<i>1997</i>			<i>0</i>	<i>SIWHP</i>	<i>BB60</i>
MV Bazar-6	<i>Chevron</i>		<i>1997</i>			<i>822-890</i>	<i>FWHP</i>	<i>BB20</i>
MV Bazar-7	<i>Chevron</i>		<i>1997</i>			<i>844-901</i>	<i>FWHP/SIWHP</i>	<i>BB20</i>
MV Bazar-9	<i>Chevron</i>		<i>1997</i>			<i>0</i>	<i>SIWHP</i>	<i>BB46, BB48, BB60</i>
<b>Field : Narshingdi</b>								
N-1	<i>BGFCL</i>	<i>vertical</i>	<i>1990</i>	<i>october,1990</i>	<i>11320</i>	<i>1143-1197</i>	<i>FWHP</i>	<i>BL</i>
N-2	<i>BGFCL</i>	<i>vertical</i>	<i>1990</i>	<i>february,2007</i>	<i>10778</i>	<i>1015-1097</i>	<i>FWHP</i>	<i>BL</i>
<b>Field : Rashidpur</b>								
RP-1	<i>SGFL</i>		<i>1960</i>			<i>1290-1291</i>	<i>FWHP</i>	<i>Upper</i>
RP-2	<i>SGFL</i>		<i>1960</i>			<i>73</i>	<i>SIWHP</i>	<i>Lower</i>
RP-3	<i>SGFL</i>		<i>1960</i>			<i>1548-1568</i>	<i>FWHP</i>	<i>Lower</i>
RP-4	<i>SGFL</i>		<i>1960</i>			<i>1450-1655</i>	<i>FWHP</i>	<i>Lower</i>
RP-5	<i>SGFL</i>		<i>1960</i>			<i>2291</i>	<i>SIWHP</i>	<i>Lower</i>
RP-6	<i>SGFL</i>		<i>1960</i>			<i>870</i>	<i>SIWHP</i>	<i>A</i>

## Conditions of Field and Well upto March 2020



**HYDROCARBON UNIT**  
Energy & Mineral Resources Division

Well	company	well type	Discovery	production start	Drilled depth (ft)	Pressure	Pressure type	Completion Zone
RP-7	SGFL		1960			1308-1338	FWHP	Lower
RP-8	SGFL		1960			1600-1625	FWHP	Upper
<b>Field : Salda Nadi</b>								
Salda-1	BAPEX		1995					
Salda-2	BAPEX		1995					
Salda-3	BAPEX	Directional	1995	February, 2012		639-640, 698-700		Upper/Lower
Salda-4	BAPEX		1995					
<b>Field : Sangu</b>								
Sangu-1	BGFCL		1996					
Sangu-3z	BGFCL		1996					
Sangu-4	BGFCL		1996					
Sangu-5	BGFCL		1996					
Sangu-7	BGFCL		1996					
Sangu-8	BGFCL		1996					
Sangu-9	BGFCL		1996					
Sangu-10	BGFCL		1996					
Sangu-11	BGFCL		1996					
<b>Field : Semutang</b>								
Semutang-5	BAPEX		1967			280-508		Lower Zone
Semutang-6	BAPEX		1967			750-1302		
<b>Field : Shahbazpur</b>								
Shahbazpur-1	BAPEX		1995	May, 2009		2310-3543		Lower Zone
Shahbazpur-2	BAPEX		1995			3541-4133		Lower Zone
Shahbazpur-3	BAPEX		1995			4300		Upper Zone
Shahbazpur-4	BAPEX		1995			4250		Upper Zone
<b>Field : Srikail</b>								
Srikail-2	BAPEX		2012			990-1016		Upper & Lower D
Srikail-3	BAPEX		2012			981-1043		Upper & Lower D
Srikail-4	BAPEX		2012			1018-1068		Upper & Lower D
<b>Field : Sundalpur</b>								
Sundalpur -1	BAPEX		2011					
Sundalpur -2	BAPEX		2011					
<b>Field : Sylhet</b>								
Sylhet-3	SGFL		1955	Aug, 1958				
Sylhet-6	SGFL		1955	Aug, 1964		800-850	SIWHP	
Sylhet-7	SGFL		1955	Apr, 2005		1750-1820	FWHP	Lower Bokabil

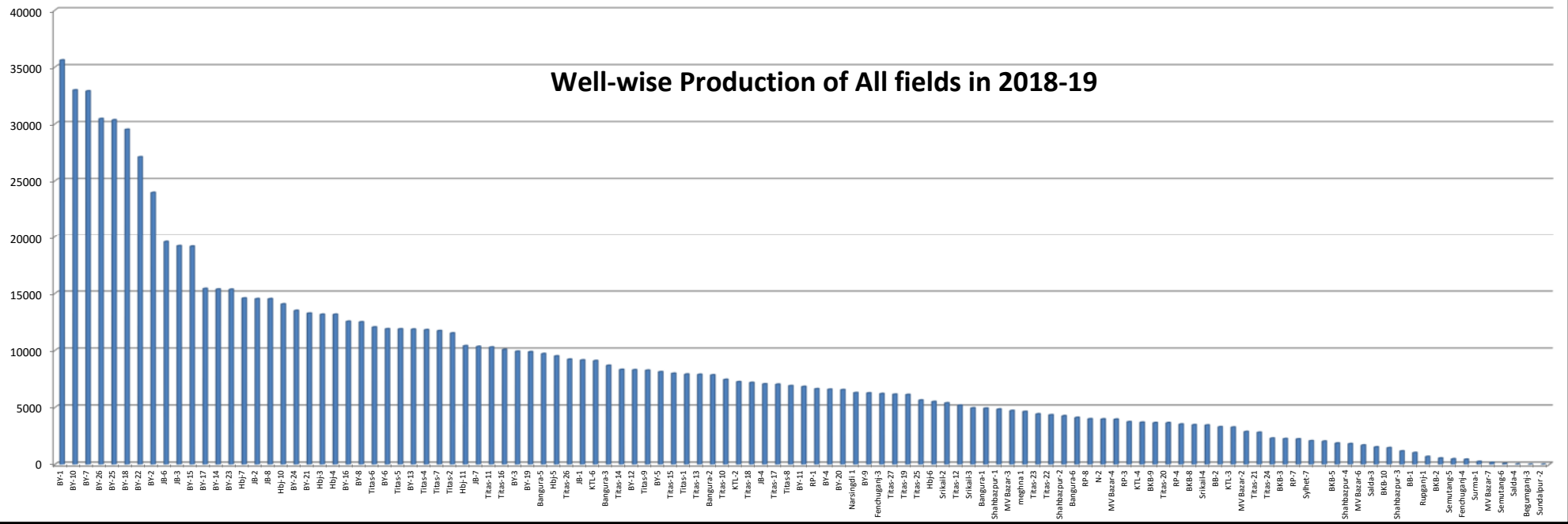


## Conditions of Field and Well upto March 2020

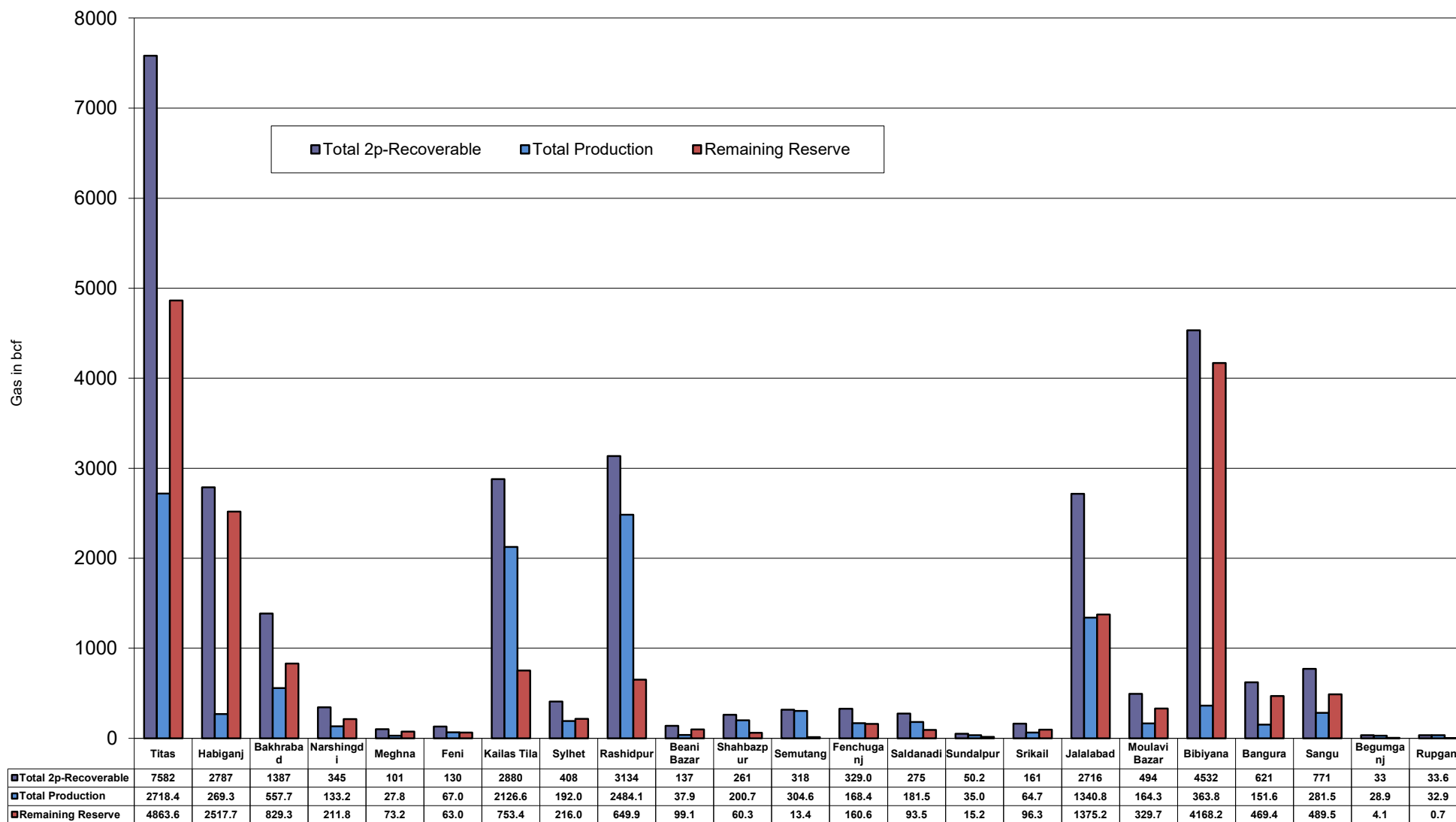


Well	company	well type	Discovery	production start	Drilled depth (ft)	Pressure	Pressure type	Completion Zone
Surma-1	SGFL		1955	June, 2010		230	SIWHP	C & D
<b>Field : Titas</b>								
Titas-1	BGFCL	vertical	1962	Mar,1969	12325	900-925	FWHP	A
Titas-2	BGFCL	vertical	1962	Fen,1969	10574	960-1020	FWHP	A
Titas-3	BGFCL	vertical	1962	sept,1969	9315	0	FWHP	A
Titas-4	BGFCL	vertical	1962	oct,1969	9350	1020-1070	FWHP	A
Titas-5	BGFCL	Directional	1962	jan,1981	10805	990-1035	FWHP	A
Titas-6	BGFCL	vertical	1962	Feb,1984	10072	1195-1225	FWHP	A
Titas-7	BGFCL	Directional	1962	July,1985	11006	1090-1160	FWHP	A
Titas-8	BGFCL	Directional	1962	sept,1985	11760	1000-1030	FWHP	B & C
Titas-9	BGFCL	Directional	1962	jan,1988	11893	1040-1085	FWHP	B & C
Titas-10	BGFCL	Directional	1962	may,1988	12139	1140-1180	FWHP	A
Titas-11	BGFCL	vertical	1962	Jun,1991	10462	1275-1310	FWHP	A
Titas-12	BGFCL	Directional	1962	July,2002	9873	1465-1500	FWHP	A
Titas-13	BGFCL	Directional	1962	June,2000	11487	1085-1115	FWHP	A
Titas-14	BGFCL	Directional	1962	June,2000	11004	1200-1250	FWHP	A
Titas-15	BGFCL	vertical	1962	may,2006	10446	0	FWHP	A
Titas-16	BGFCL	Directional	1962	dec,2005	11673	1205-1225	FWHP	A
Titas-17	BGFCL	vertical	1962	feb,2013	9424	1145-1175	FWHP	A
Titas-18	BGFCL	Directional	1962	august,2013	10932	1165-1190	FWHP	A
Titas-19	BGFCL	Directional	1962	may,2014	12730	1365-1415	FWHP	A
Titas-20	BGFCL	Directional	1962	oct,2013	11585	1370-1440	FWHP	A
Titas-21	BGFCL	Directional	1962	dec,2013	11631	1260-1285	FWHP	A
Titas-22	BGFCL	Directional	1962	march,2014	11926	990-1025	FWHP	A
Titas-27	BGFCL	Directional	1962	april,2014	10292	1245-1265	FWHP	A
Titas-23	BGFCL	Directional	1962	feb,2017	11988	2265-2340	FWHP	C
Titas-24	BGFCL	Directional	1962	oct,2016	12686	1120-1245	FWHP	C
Titas-25	BGFCL	vertical	1962	march,2016	11680	1300-1340	FWHP	A
Titas-26	BGFCL	Directional	1962	july,2016	12618	1840-1875	FWHP	C
<b>Field : Begumganj</b>								
Begumganj-3	BAPEX		1977					
<b>Field : Rupganj</b>								
Rupganj-1	BAPEX		2014			38-88		

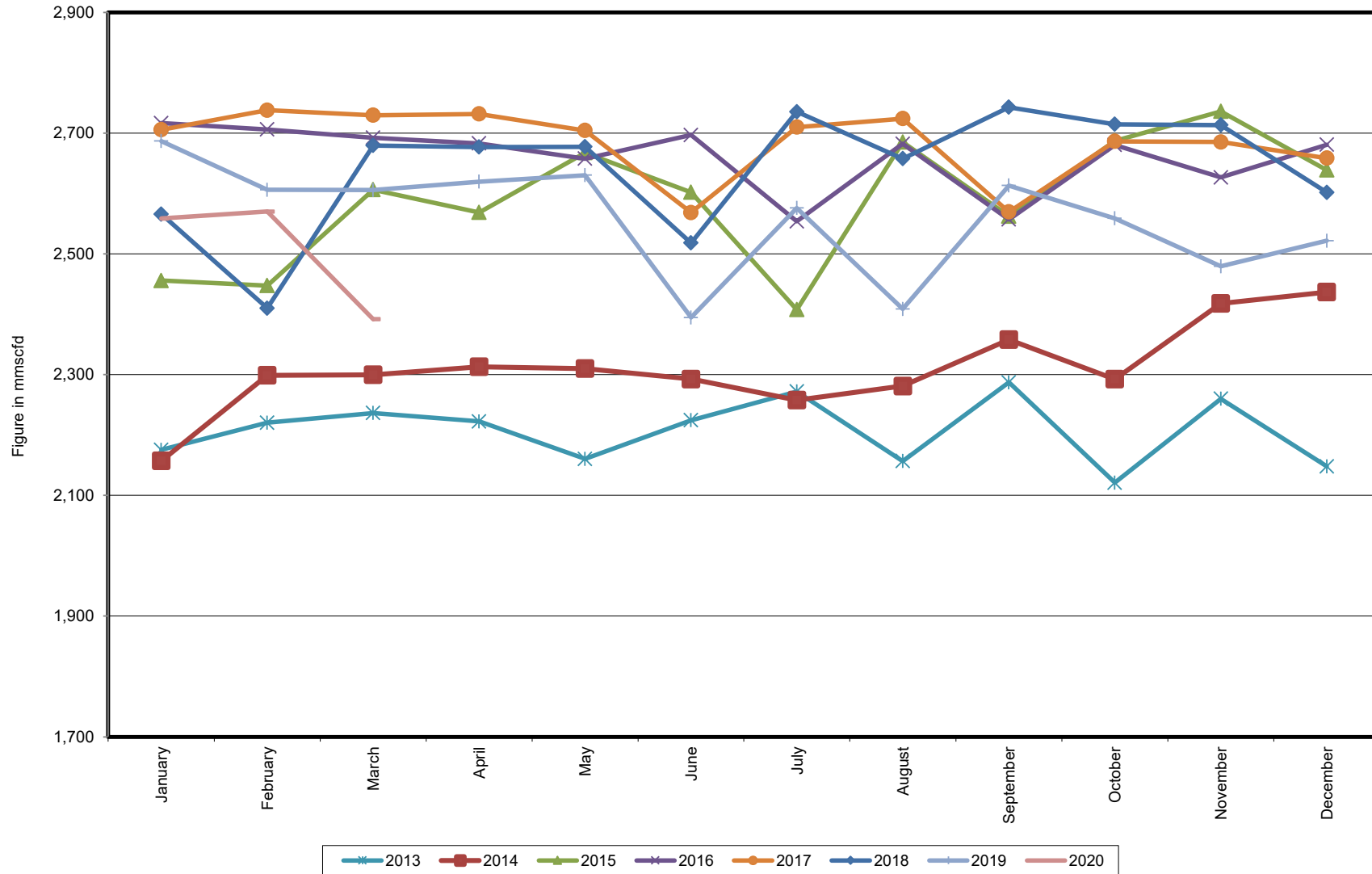
### Well-wise Production of All fields in 2018-19



## Reserve, Production and Remaining Reserve as of March 2020



## Daily Avg. Production From January 2013 to March 2020



## Field Wise Daily Avg. Production March 2020

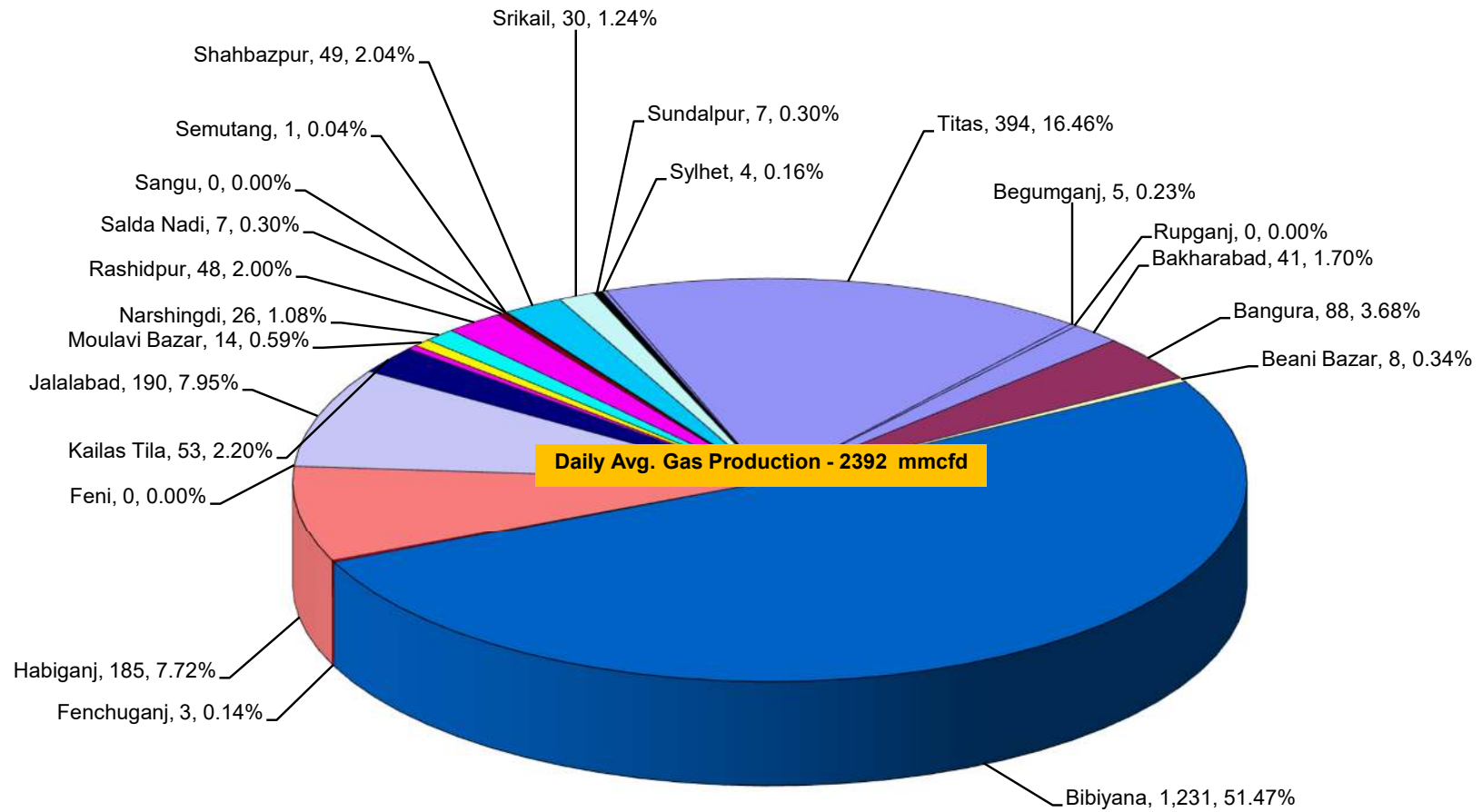
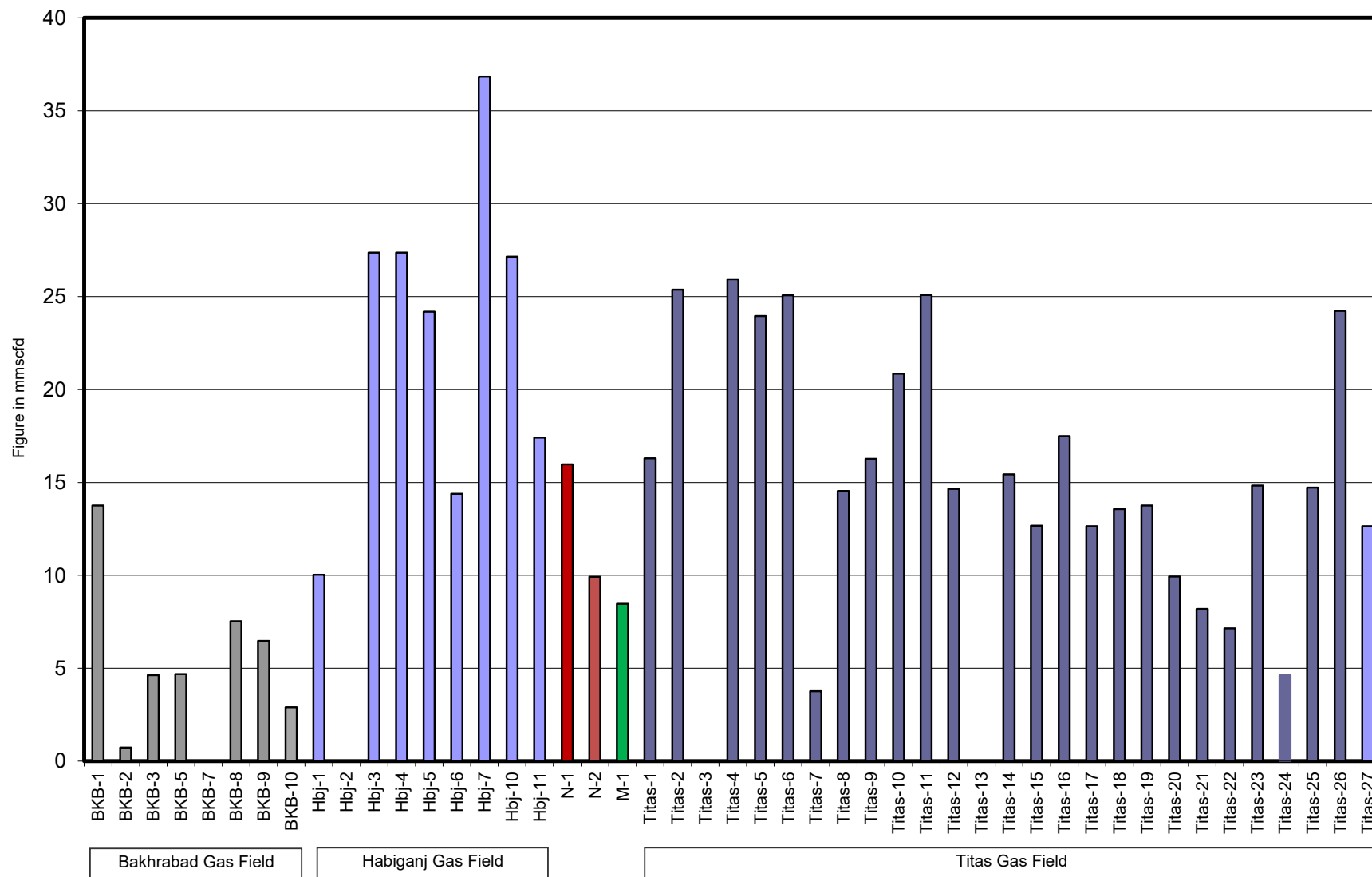


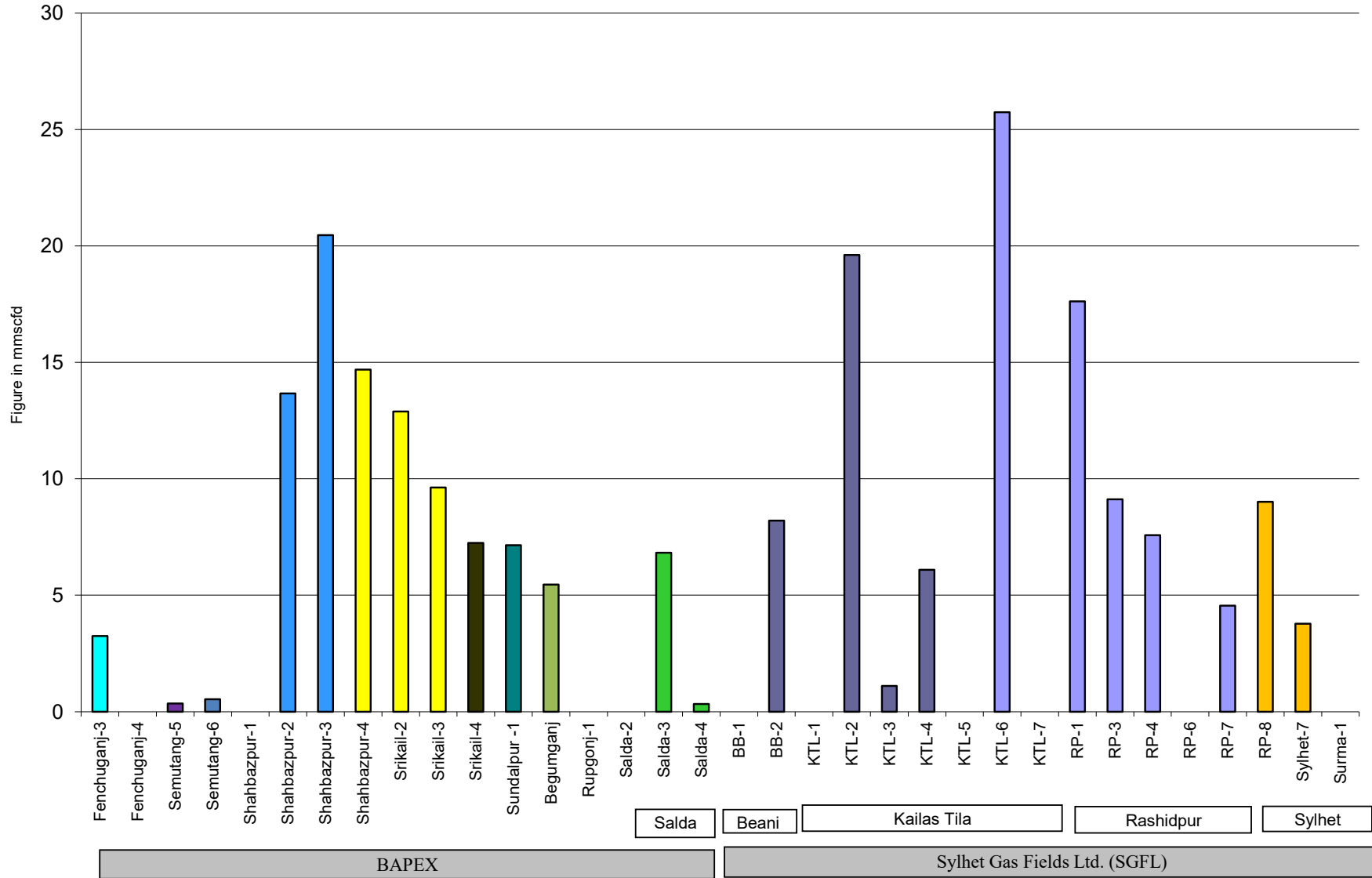
Figure in mmcfd  
and % of total production

## Wellwise Daily Avg. Production- BGFCL March 2020

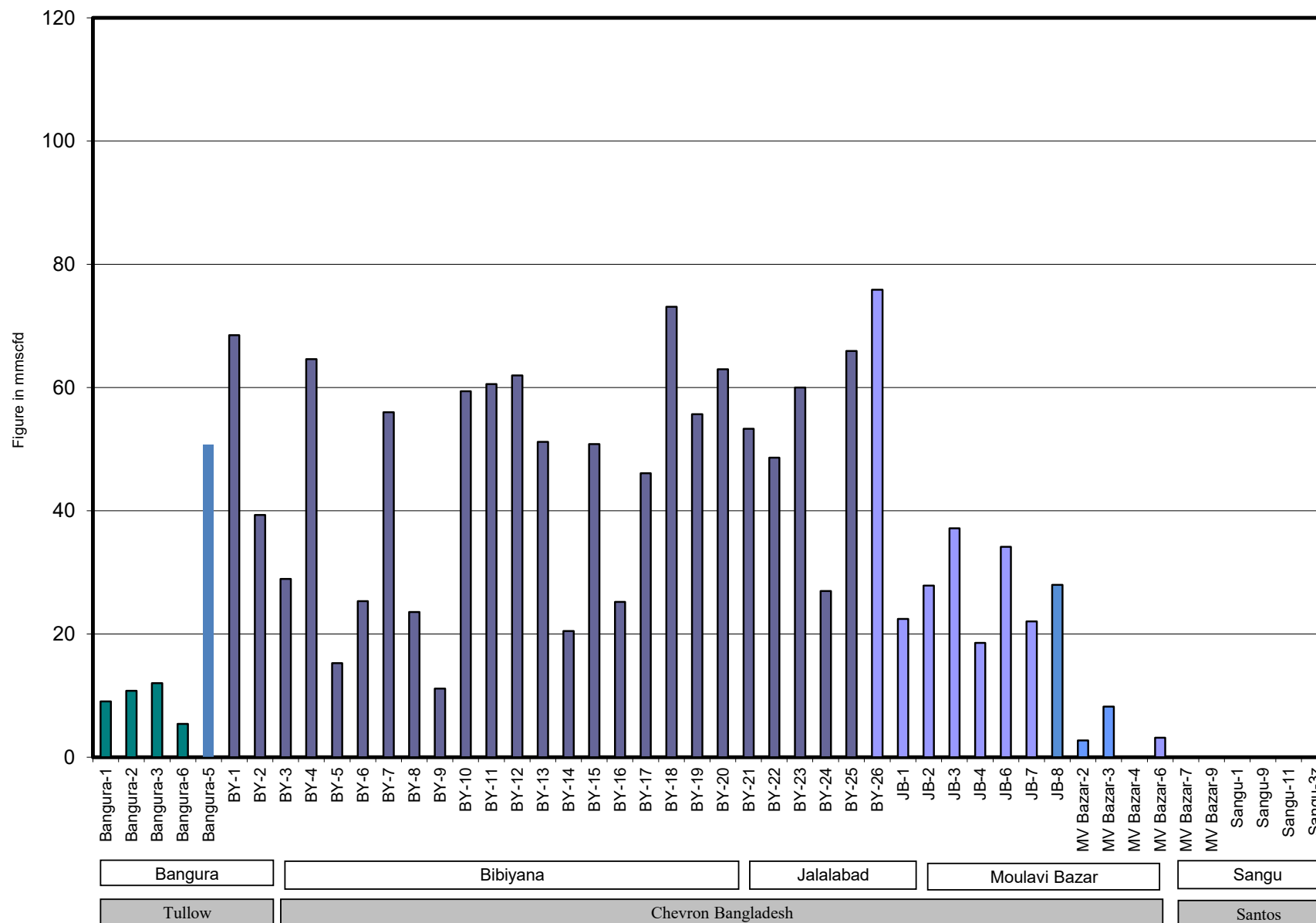


Bangladesh Gas Fields Co. Ltd. (BGFCL)

# Wellwise Daily Avg. Production- Bapex and SGFL March 2020

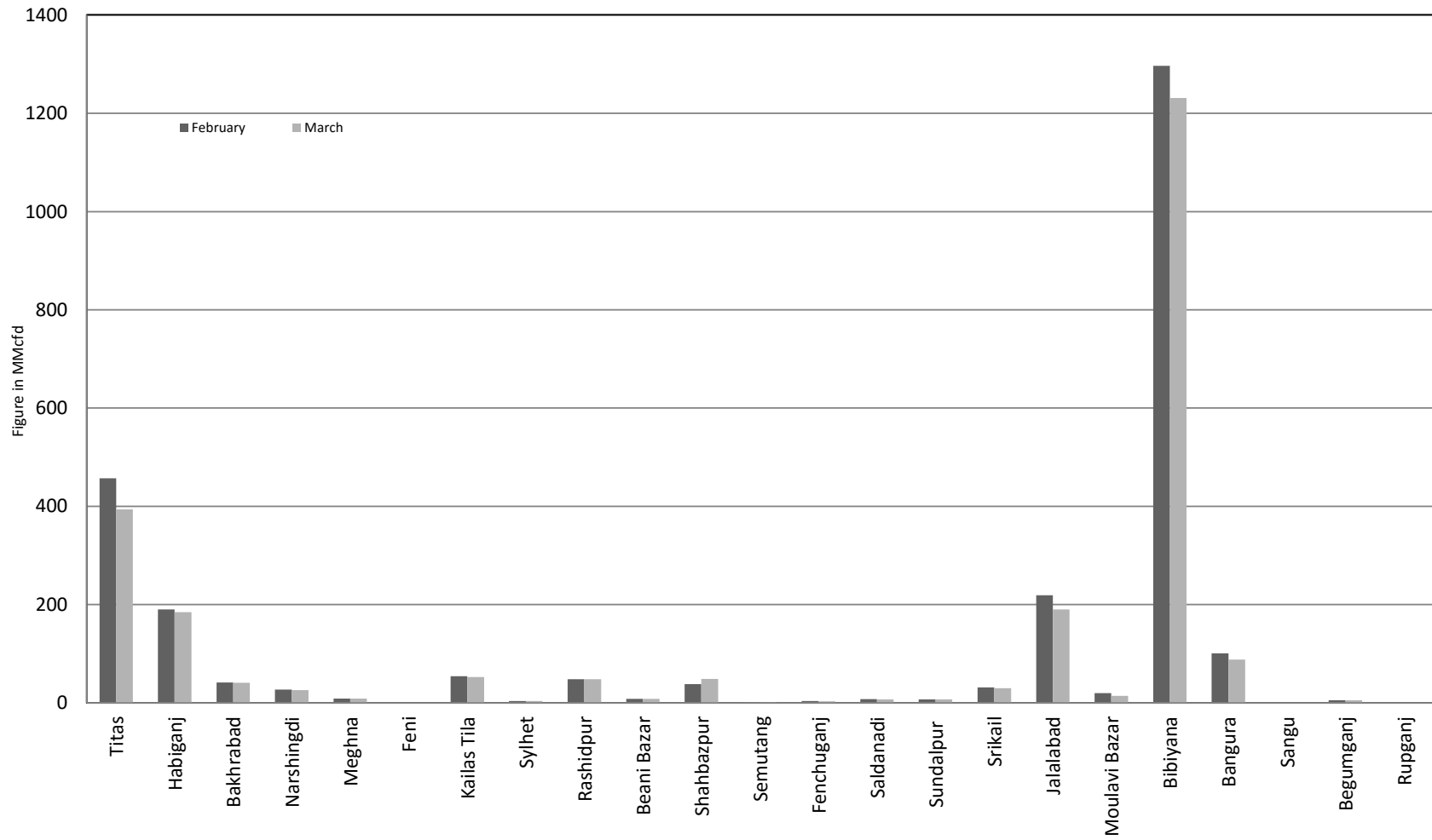


## Wellwise Daily Avg. Production- IOC and JVA March 2020

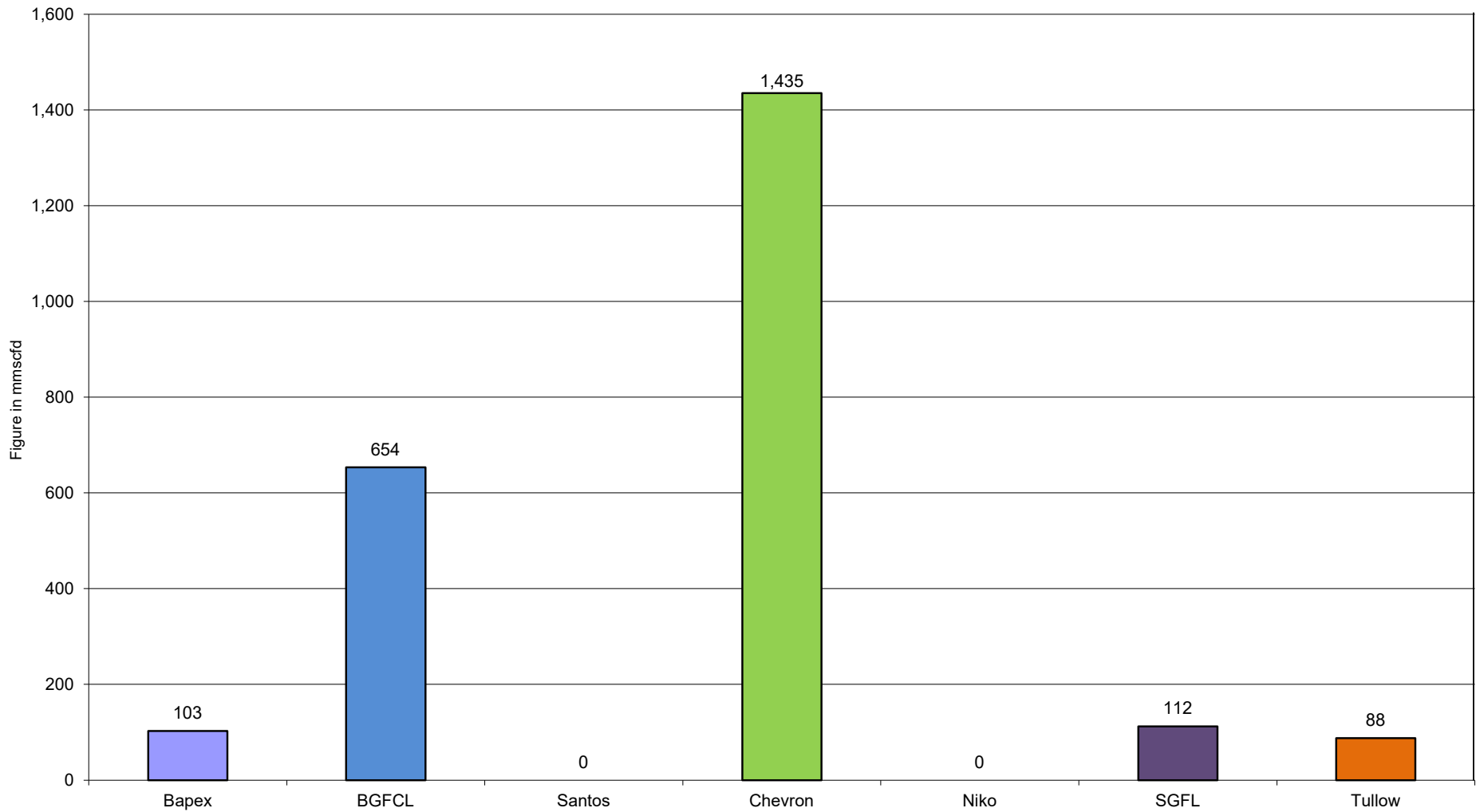




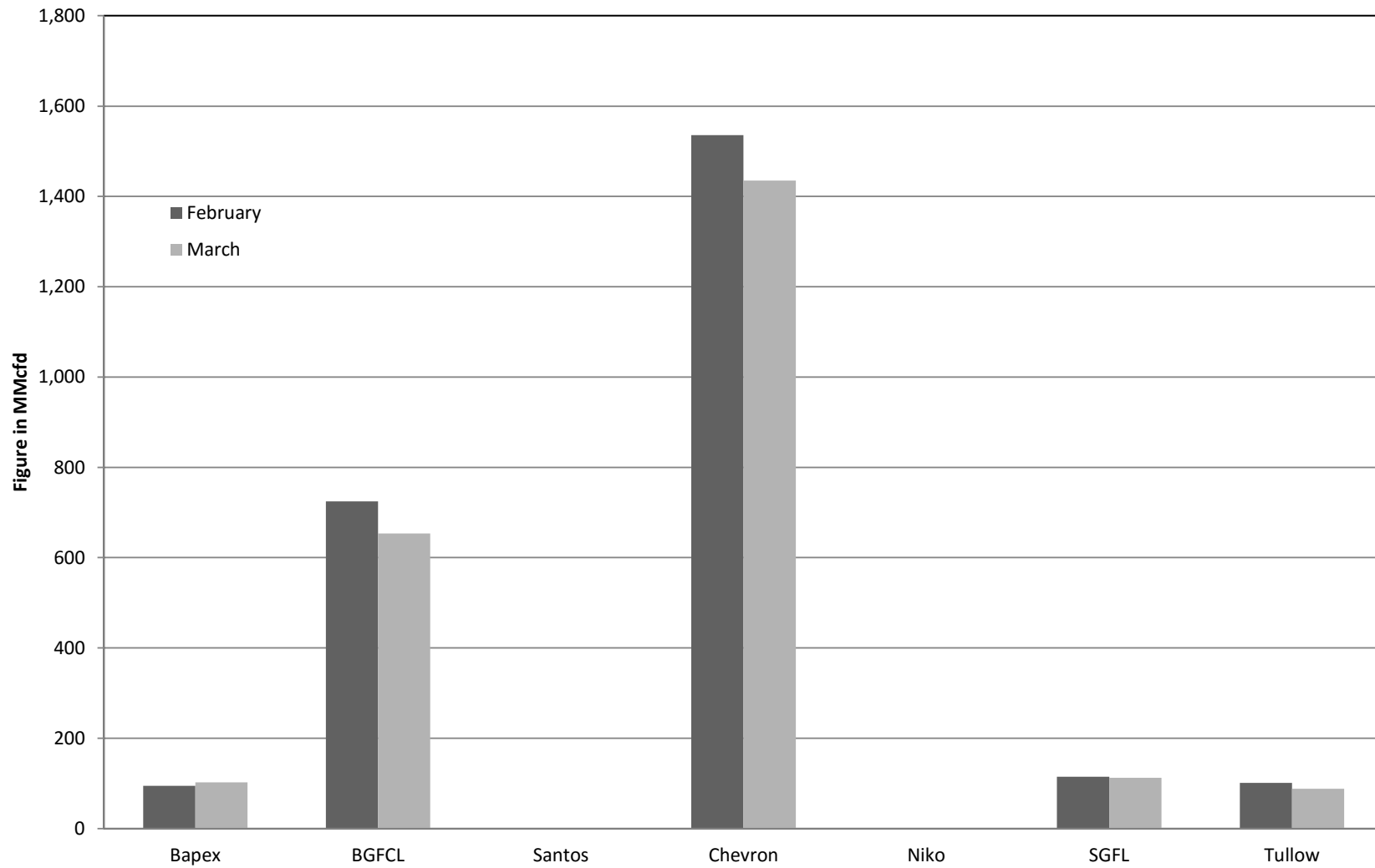
### Comparison of fieldwise daily avg. Gas production between February 2020 & March 2020



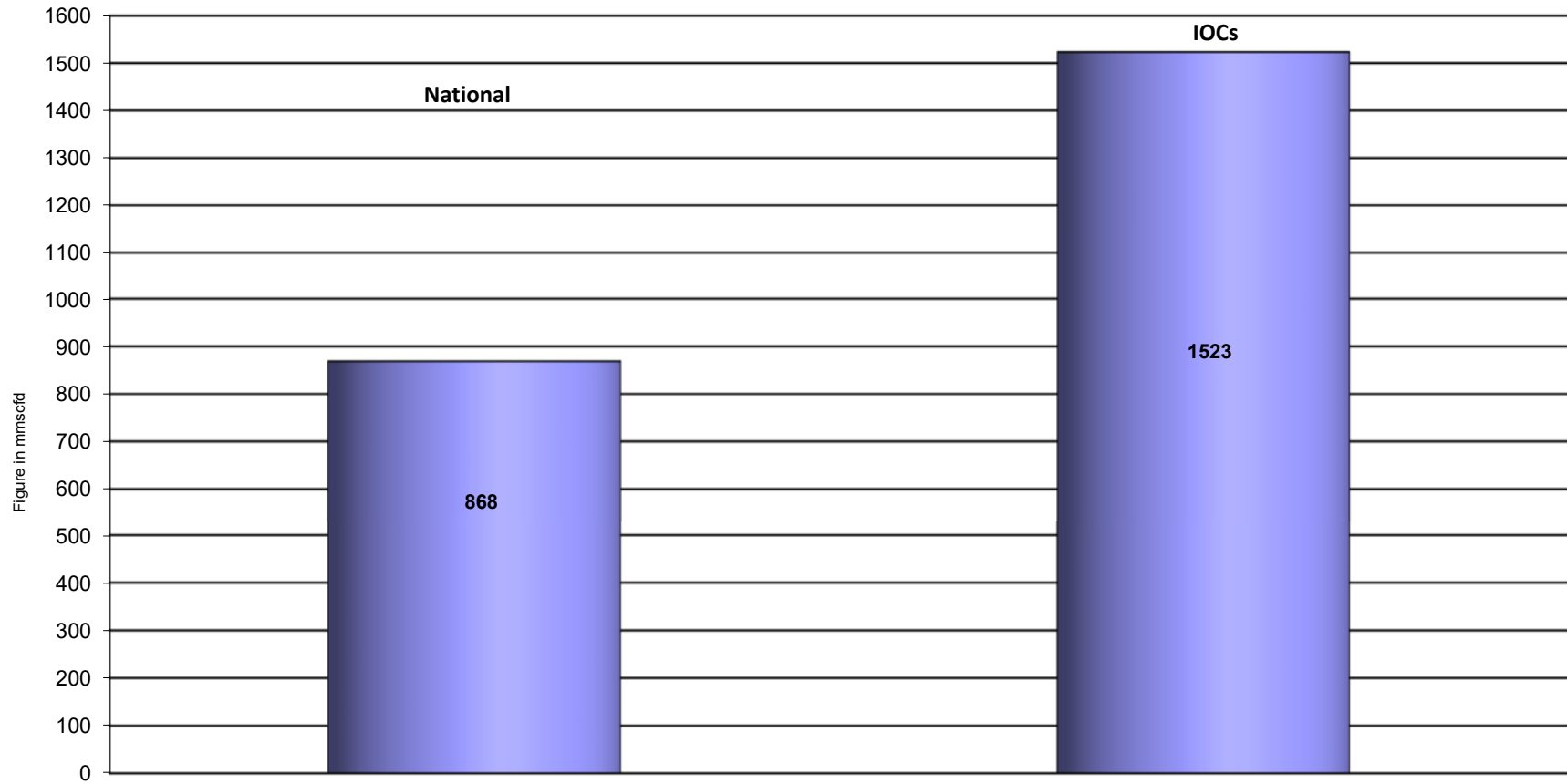
### Daily Avg. Production by Operators March 2020



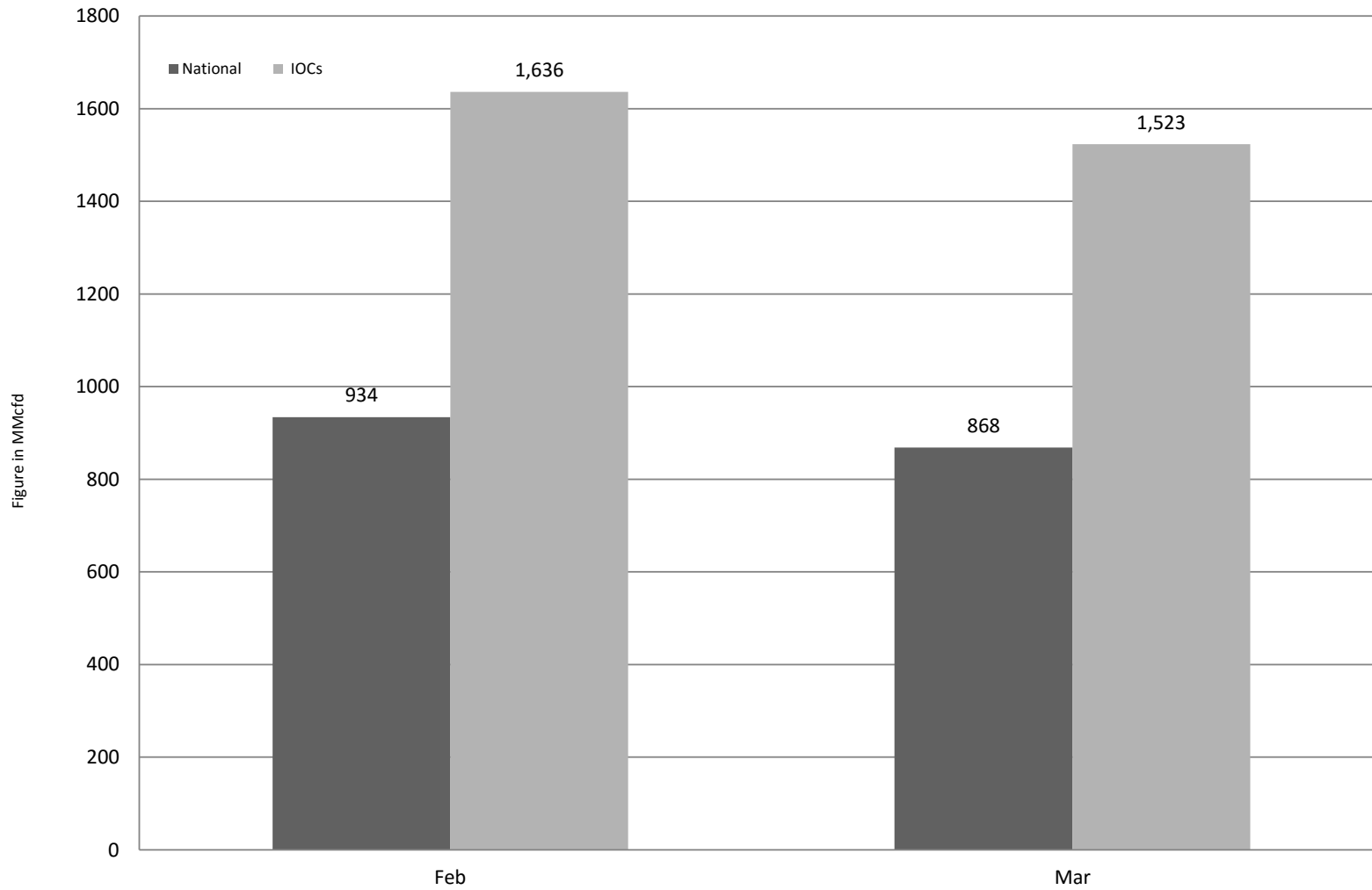
### Comparison of operatorwise daily avg. Gas production between February 2020 & March 2020



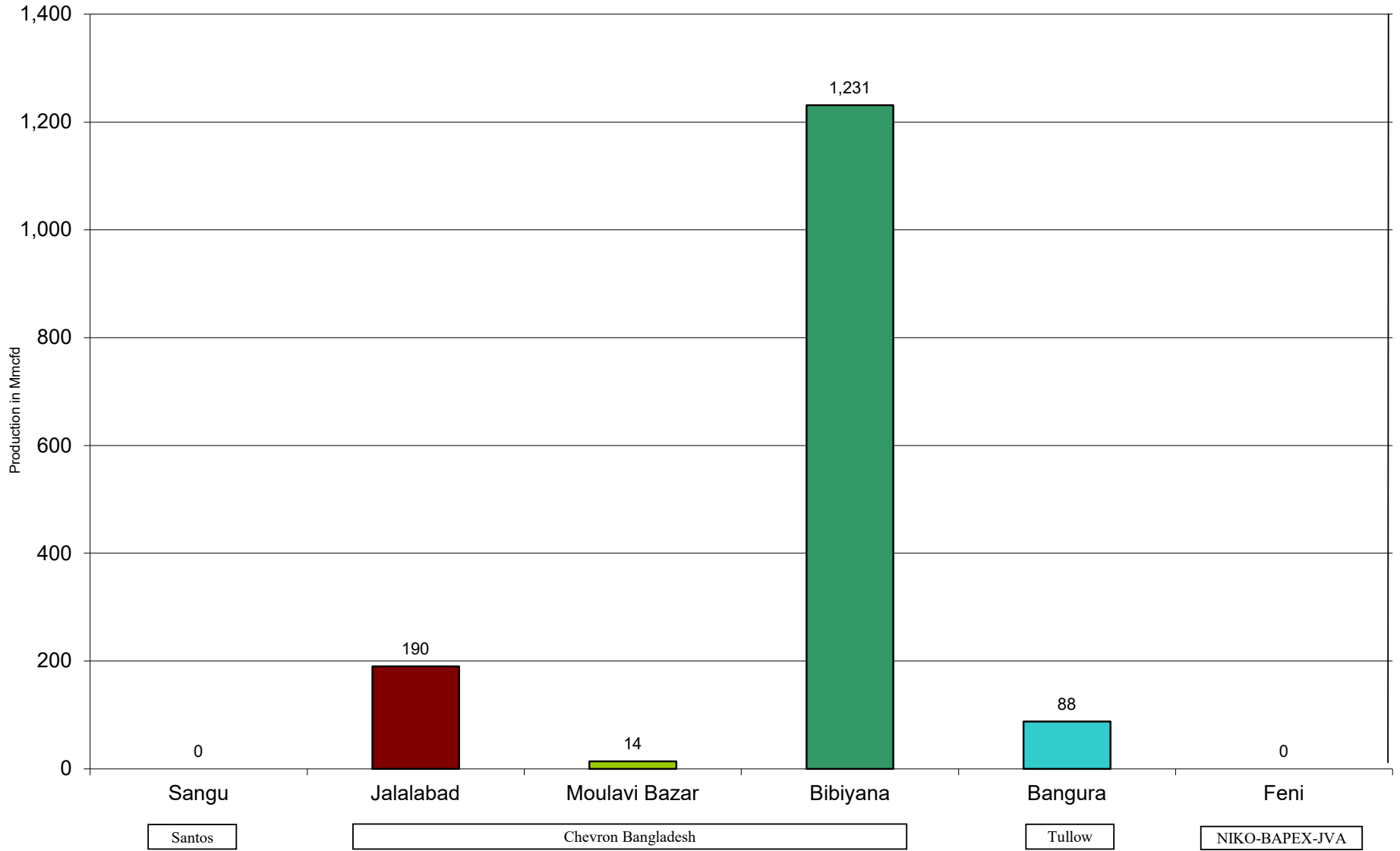
## Daily Avg. Production - National Vs. IOCs March 2020



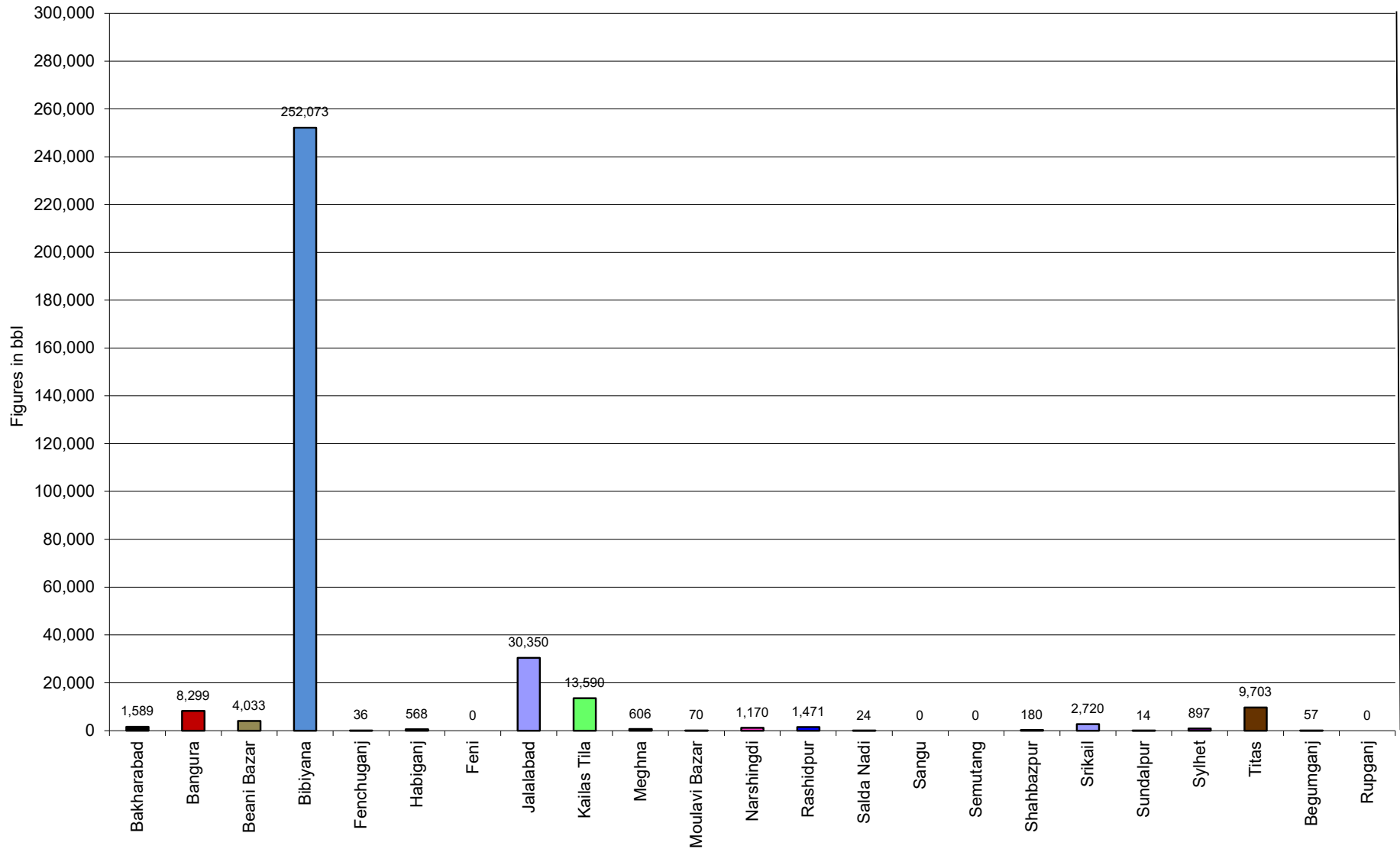
### Comparison of daily avg. Gas production - National vs IOC's between February 2020 & March 2020



### Daily Avg. Production - IOC and JVA March 2020



# Monthly Condensate Production March 2020



## Field wise Coal Reserve in Bangladesh

SI No.	Coal Basins	Proved (Mt)	Indicated (Mt)	Inferred (Mt)	Total (Mt)
1	Barapukuria	114.32	211.33	21.06+(43-64)*	346.71+(43-64)*
2	Phulbari	288	226	58	572
3	Khalashpir	-	297.57	225.92	523.49
4	Jamalganj	-	-	1053.9	1053.9
5	Dighipara	-	105	495	600
	<b>Total</b>	<b>402.32</b>	<b>839.9</b>	<b>1896.88-1917.88</b>	<b>3139.10-3160.10</b>

*\*Resources of VI Seam in second syncline are towards SW of main basin, after Wardell Armstrong*

*NOTE: Reserve Figure based on Coal Sector Development Strategy (Final), HCU, PwC*



## Summary of Reserve and Production of Barapukuria Coal Mine As of 31 March 2020

<b>Coal Initially Place (Proven + Probable)</b>	<b>346,710 kT</b>	<b>346.71 MT</b>
<b>Total Reserve of Seam VI</b>	<b>285,410 kT</b>	<b>285.41 MT</b>
<b>Recoverable from Seam VI Central part(Proven + Probable)</b>	<b>16,540 kT*</b>	<b>16.54 MT</b>
<b>Coal Production in March 2020</b>	<b>83.71 kT</b>	<b>0.08 MT</b>
<b>Cumulative Production as of March 2020</b>	<b>11,447 kT</b>	<b>11.45 MT</b>
<b>Remaining Reserve</b>	<b>5,093 kT</b>	<b>5.09 MT</b>

*NOTE: Reserve figure based on Mines and Minerals Development Report ,HCU PwC*

\*Figure from BCMCL, M/S Wardell Armstrong. According to Mines and Minerals Development Report ,HCU, PwC this figure is 64.8 Mt

## Barapukuria Coal Mine-MPM and P Contract (BCMCL)

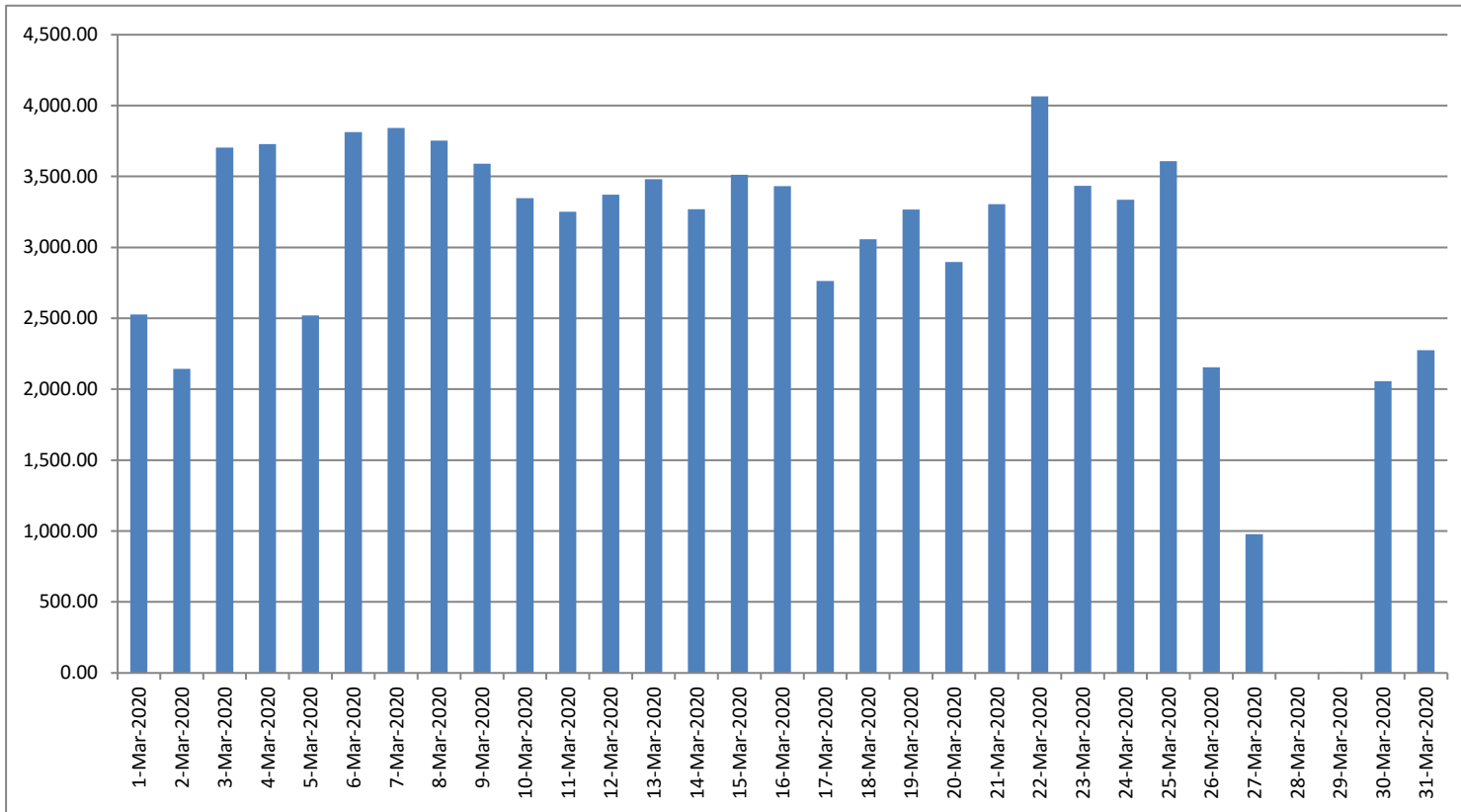
### Measurement Record: Surface Belt Weigher

Measurement Period: March 2020

Day wise data	Consortium Daily Output (ton)	Consortium Cumulative Total	BCMCL Daily Output	BCMCL Cumulative Total	Remarks
1-Mar-2020	2,527.43	2,527.43	2,527.43	2,527.43	
2-Mar-2020	2,143.67	4,671.10	2,143.67	4,671.10	
3-Mar-2020	3,702.76	8,373.86	3,702.76	8,373.86	
4-Mar-2020	3,727.50	12,101.36	3,727.50	12,101.36	
5-Mar-2020	2,519.13	14,620.49	2,519.13	14,620.49	
6-Mar-2020	3,813.19	18,433.68	3,813.19	18,433.68	
7-Mar-2020	3,841.97	22,275.65	3,841.97	22,275.65	
8-Mar-2020	3,752.71	26,028.36	3,752.71	26,028.36	
9-Mar-2020	3,589.00	29,617.36	3,589.00	29,617.36	
10-Mar-2020	3,348.13	32,965.49	3,348.13	32,965.49	
11-Mar-2020	3,252.19	36,217.68	3,252.19	36,217.68	
12-Mar-2020	3,371.81	39,589.49	3,371.81	39,589.49	
13-Mar-2020	3,480.20	43,069.69	3,480.20	43,069.69	
14-Mar-2020	3,268.20	46,337.89	3,268.20	46,337.89	
15-Mar-2020	3,512.44	49,850.33	3,512.44	49,850.33	
16-Mar-2020	3,432.57	53,282.90	3,432.57	53,282.90	
17-Mar-2020	2,763.82	56,046.72	2,763.82	56,046.72	
18-Mar-2020	3,058.20	59,104.92	3,058.20	59,104.92	
19-Mar-2020	3,267.32	62,372.24	3,267.32	62,372.24	
20-Mar-2020	2,896.82	65,269.06	2,896.82	65,269.06	
21-Mar-2020	3,305.38	68,574.44	3,305.38	68,574.44	
22-Mar-2020	4,064.19	72,638.63	4,064.19	72,638.63	
23-Mar-2020	3,433.89	76,072.52	3,433.89	76,072.52	
24-Mar-2020	3,335.26	79,407.78	3,335.26	79,407.78	
25-Mar-2020	3,607.13	83,014.91	3,607.13	83,014.91	
26-Mar-2020	2,155.38	85,170.29	2,155.38	85,170.29	
27-Mar-2020	977.94	86,148.23	977.94	86,148.23	
28-Mar-2020	0.00	86,148.23	0.00	86,148.23	
29-Mar-2020	1.31	86,149.54	1.31	86,149.54	
30-Mar-2020	2,055.63	88,205.17	2,055.63	88,205.17	
31-Mar-2020	2,275.57	90,480.74	2,275.57	90,480.74	

less Difference in Water Content:	4981.95
Less Out of Seam dilution:	1790.61
Coal adjustment for scale recalibration	0
<b>Output (tons) measured by Belt Weigher:</b>	<b>83,708.18</b>
Tonnes mined in DARR	0
Net Output after removing DARR	83,708.18

## Barapukuria Coal Mine Daywise Data Graph for March 2020



আসুন, যানবাহনসমূহকে অটোগ্যাসে রূপান্তর করি...

জাতীয় সম্পদ প্রাকৃতিক গ্যাস সাশ্রয় করি...

facebook

"Energy misused, cannot be excused"

আমাদের ঘরে যদি এখনো কয়েল স্টার্টার যুক্ত টিউবলাইট থেকে থাকে, আসুন আজই LED টিউবলাইট দ্বারা প্রতিস্থাপন করি।

HYDROCARBON UNIT ON FACEBOOK

“আসুন আমাদের জাতীয় সম্পদ প্রাকৃতিক গ্যাস সাশ্রয় করি”

১। **LPG** ব্যবহার করুন..

অবৈধ গ্যাস সংযোগ থেকে বিরত থাকুন

২। **CNG** নয়, অকটেন দিয়ে গাড়ি চালান...

গাড়ির ইঞ্জিনের আয়ুষ্কাল বাড়ান

চলুন আজই যানবাহনসমূহ AUTO GAS (LPG) এ রূপান্তর করি...

- \* CNG এর তুলনায় LPG কনভারশনে ৫০% কম খরচ হয়
- \* ৩-৫ মিনিটে ট্যাংকে ফুয়েল ভর্তি হয়, লম্বা লাইনে দাঁড়িয়ে অপেক্ষা করার প্রয়োজন পরে না
- \* CNG এর তুলনায় সিলিন্ডারে জায়গা, ওজন ও প্রেশার কম দরকার
- \* রক্ষণাবেক্ষণের খরচ কম
- \* পেট্রলের তুলনায় AUTO GAS -এ খরচ প্রায় ৫০% কম
- \* গ্যাসোলিন ও ডিজেলের তুলনায় নিঃসরণ কম

# Hydrocarbon Unit

Energy & Mineral Resources Division  
Ministry of Power, Energy & Mineral Resources  
153, Pioneer Road  
Segunbagicha, Dhaka-1000  
www.hcuro.gov.bd